

3" LAYER OR WOOD MULCH
KEEP 3' AWAY FROM TREE
CROWN NOT REQUIRED IN
LAWN AREAS.

3" HIGH SOIL WATERING
BASIN. NOT REQUIRED
IN LAWN AREAS.

FINISHED GRADE

12' DIA. X 10' DEEP
AUGERED HOLE. BACKFILL
WITH EXCAVATED MATERIAL
AND JET. ALLOW SOIL TO
SETTLE FOR FOUR DAYS
PRIOR TO PLANTING. PROVIDE
AUGERED HOLE ONLY IF
SPECIFIED.

END OF STAKE SHALL NOT
EXTEND INTO TREE CANOPY.
CUT AS NECESSARY

RUBBER CINCH TREE TIE, NAIL
THROUGH KNOT. FOUR (4)
PER TREE

PLACE ROOTBALL 1" ABOVE
FINISHED GRADE. PROVIDE
POSITIVE DRAINAGE AWAY FROM
CROWN.

PLANTING PIT SHALL BE 2X
THE DIAMETER OF THE
ROOTBALL
SCARIFY SIDES/BOTTOM AND
BACKFILL WITH NATIVE SOIL

ROOT BALL

FERTILIZER TABLET OR PACKET
TYP. SEE SPECIFICATIONS

TREE STAKES SHALL BE
INSTALLED A MINIMUM OF
6" INTO UNDISTURBED SOIL

UNDISTURBED SOIL

NOTE:
FOR 36" BOX TREES. STAKE WITH TWO 2" X 12'
LONG SCHEDULE 40 GALVANIZED STEEL PIPES.
PAINTED WITH TWO COATS OF DARK GREEN
PAINT. TIE TREE WITH A METAL TWIST BRACE
BOLTED TO THE STAKES OR OTHER APPROVED
TREE TIE AS SPECIFIED.

DATE: 09/22/2017		NOT TO SCALE	
REVISION	BY	APPROVED	DATE


CITY OF ELK GROVE - PUBLIC WORKS

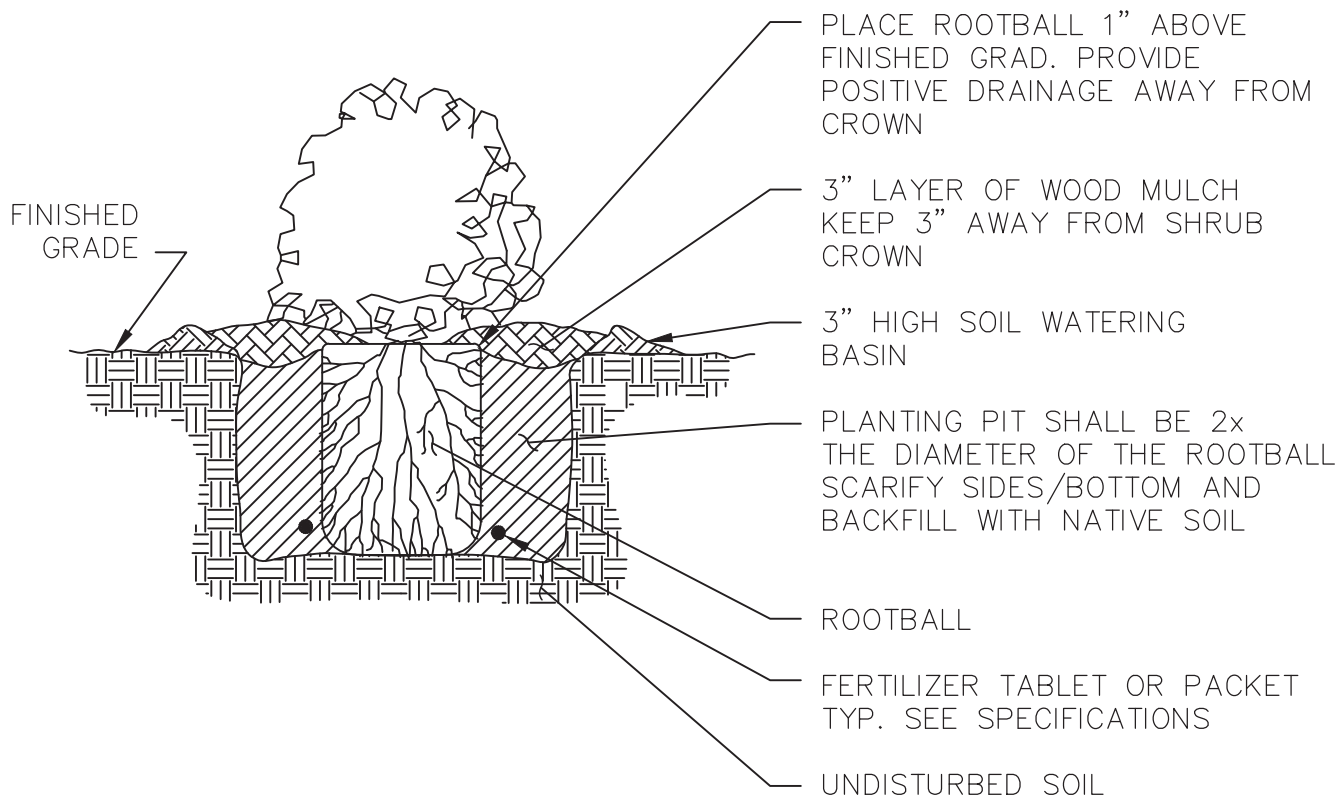
TREE PLANTING

APPROVED BY:
Paul M. Muelich
CITY ENGINEER

10/24/2018
DATE

DRAWING NUMBER
L-1





DATE: 09/22/2017		NOT TO SCALE	
REVISION	BY	APPROVED	DATE


CITY OF ELK GROVE - PUBLIC WORKS

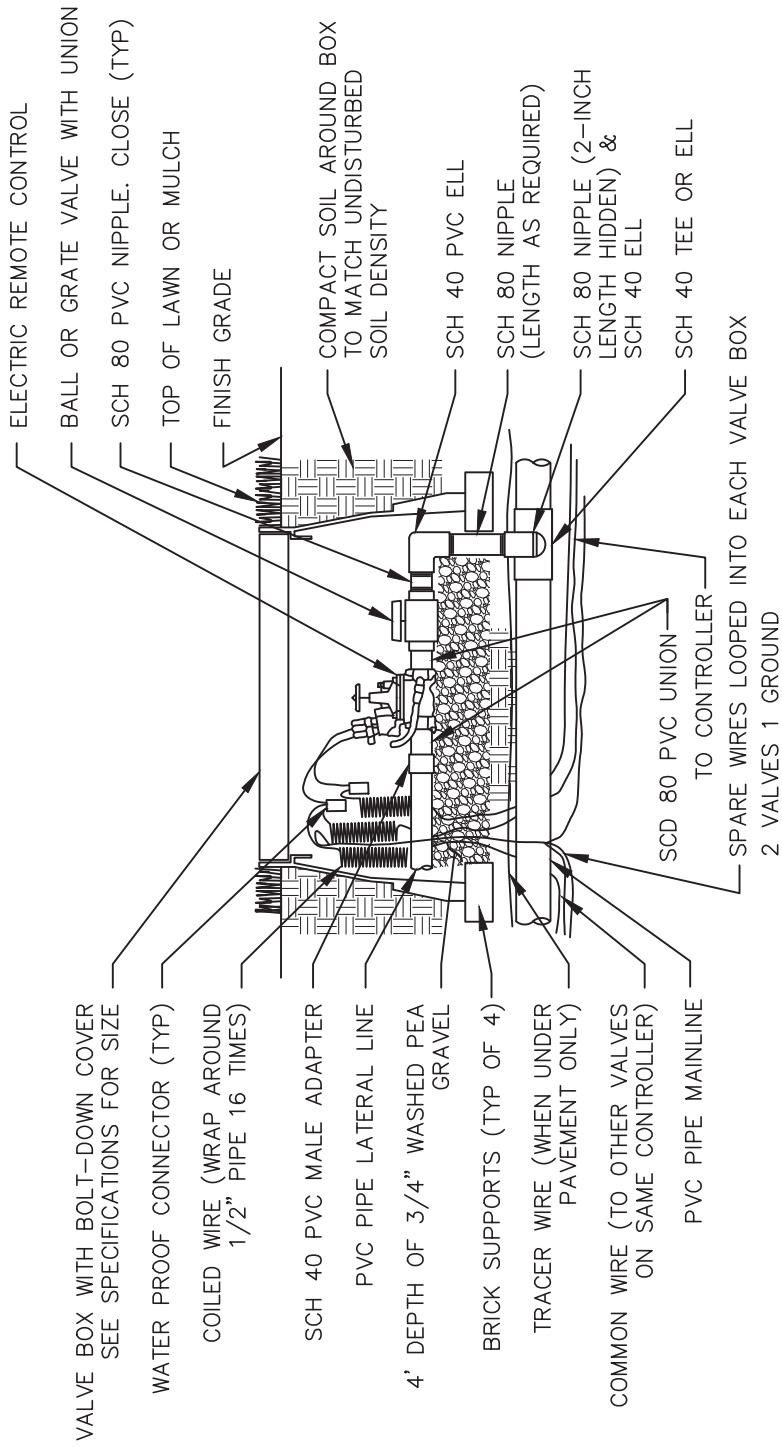
SHRUB PLANTING

APPROVED BY:
Paul Muroch
CITY ENGINEER

10/24/2018
DATE

DRAWING NUMBER
L - 2





NOTE:


1. ALL WIRE SHALL BE TAPED AND BUNDLED EVERY TEN FEET AND SHALL BE INSTALLED AS PER LOCAL CODE.
2. SHUT-OFF VALVES 3" AND SMALLER SHALL BE SCH. 80 BALL VALVES. VALVES LARGER THAN 3" SHALL BE BRASS GATE VALVES.
3. ALL VALVE BOXES AND LIDS WITHIN THE SIDEWALK SHALL BE OF TRAFFIC RATED QUALITY.

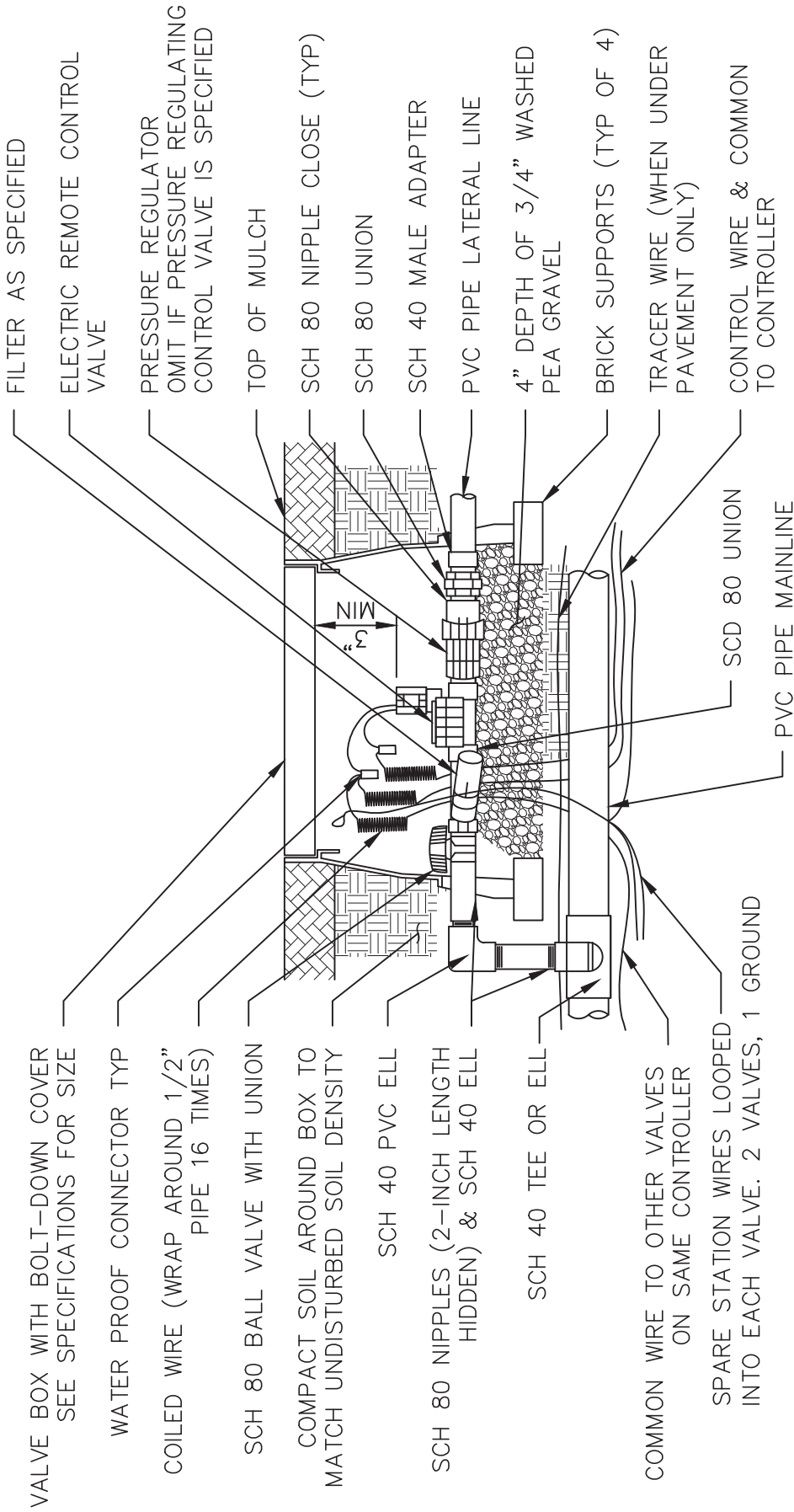
DATE:	NOT TO SCALE
09/22/2007	
REVISION	APPROVED
	DATE

CITY OF ELK GROVE - PUBLIC WORKS

REMOTE CONTROL VALVE

APPROVED BY: *Paul F. Muldock*
 CITY ENGINEER
 DATE: 10/24/2018
 DRAWING NUMBER: L-3





NOTES:

1. ALL WIRE SHALL BE TAPED AND BUNDLED EVERY TEN FEET AND SHALL BE INSTALLED AS PER LOCAL CODE.
2. ALL VALVE BOXES AND LIDS WITHIN THE SIDEWALK SHALL BE OF TRAFFIC RATED QUALITY.


DATE:	NOT TO SCALE
09/22/2007	
REVISION BY	APPROVED DATE

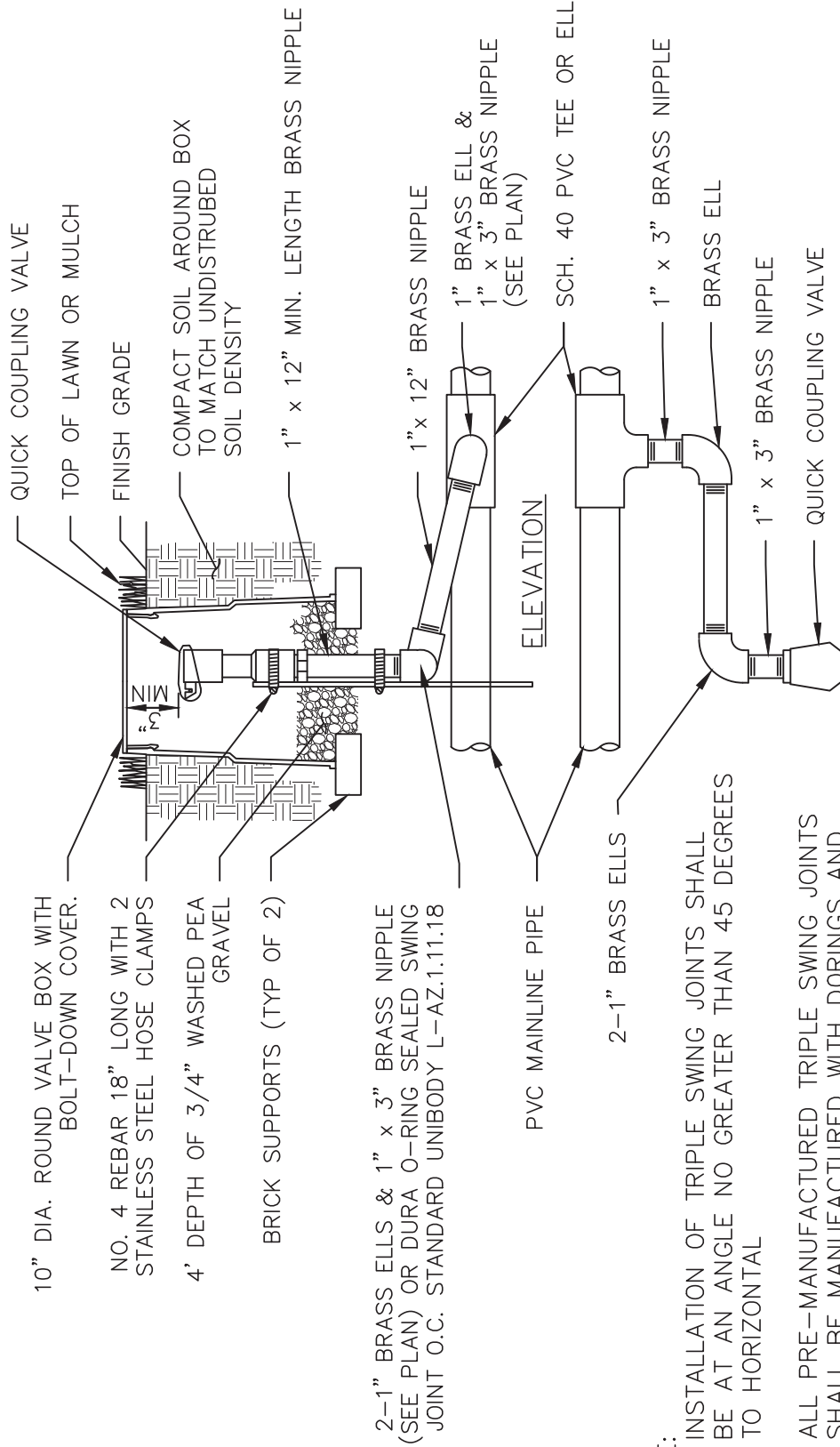
CITY OF ELK GROVE - PUBLIC WORKS

DRIP IRRIGATION VALVE ASSEMBLY

APPROVED BY: *Paul F. Muddick*
 CITY ENGINEER
 DATE: 10/24/2018

DRAWING NUMBER
L - 4





10" DIA. ROUND VALVE BOX WITH BOLT-DOWN COVER.

NO. 4 REBAR 18" LONG WITH 2 STAINLESS STEEL HOSE CLAMPS

4' DEPTH OF 3/4" WASHED PEA GRAVEL

BRICK SUPPORTS (TYP OF 2)

2-1" BRASS ELLS & 1" x 3" BRASS NIPPLE (SEE PLAN) OR DURA O-RING SEALED SWING JOINT O.C. STANDARD UNIBODY L-AZ.1.11.18

PVC MAINLINE PIPE

NOTE:
 1. INSTALLATION OF TRIPLE SWING JOINTS SHALL BE AT AN ANGLE NO GREATER THAN 45 DEGREES TO HORIZONTAL

2. ALL PRE-MANUFACTURED TRIPLE SWING JOINTS SHALL BE MANUFACTURED WITH DORINGS AND SHALL BE RATED AT 200 PSI.

3. ALL VALVE BOXES AND LIDS WITHIN THE SIDEWALK SHALL BE OF TRAFFIC RATED QUALITY.

PLAN VIEW

DATE:	NOT TO SCALE
09/22/2007	
REVISION	APPROVED

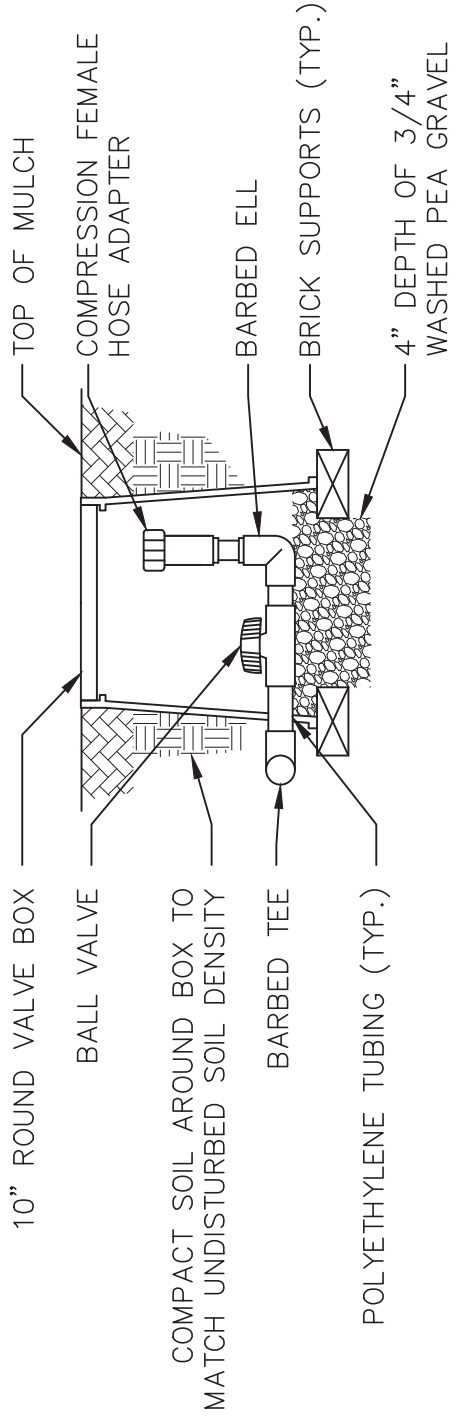
CITY OF ELK GROVE - PUBLIC WORKS

APPROVED BY: *Paul F. Muddick*
 CITY ENGINEER
 DATE: 10/24/2018

DRAWING NUMBER
L-5

QUICK COUPLING VALVE





NOTE:

1. ALL VALVE BOXES AND LIDS WITHIN THE SIDEWALK AREA SHALL BE OF TRAFFIC RATED QUALITY.

DATE:	NOT TO SCALE
09/22/2007	
REVISION	APPROVED
BY	DATE


CITY OF ELK GROVE - PUBLIC WORKS

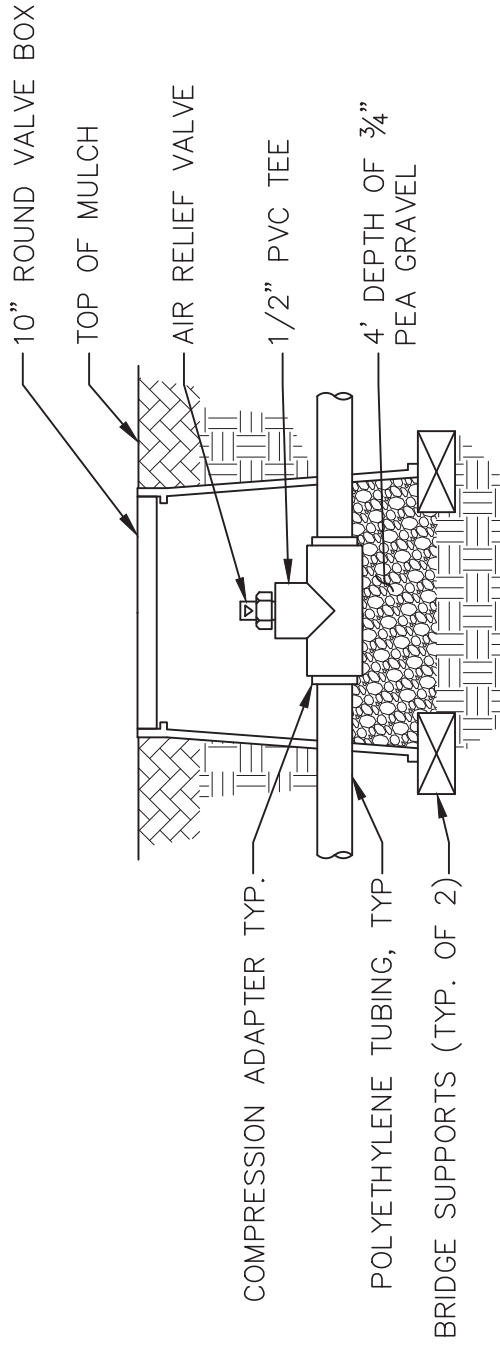
FLUSH VALVE

APPROVED BY: *Paul F. Mudd*
 CITY ENGINEER

10/24/2018
 DATE

DRAWING NUMBER
L-7





NOTE:

1. AIR RELIEF VALVE SHALL BE INSTALLED AT THE HIGHEST POINT OF THE SYSTEM ABOVE ALL DRIPLINE LATERALS.
2. ALL VALVE BOXES AND LIDS WITHIN THE SIDEWALK SHALL BE OF TRAFFIC RATED QUALITY.

DATE: 09/22/2007	NOT TO SCALE
REVISION	APPROVED
BY	DATE


CITY OF ELK GROVE - PUBLIC WORKS

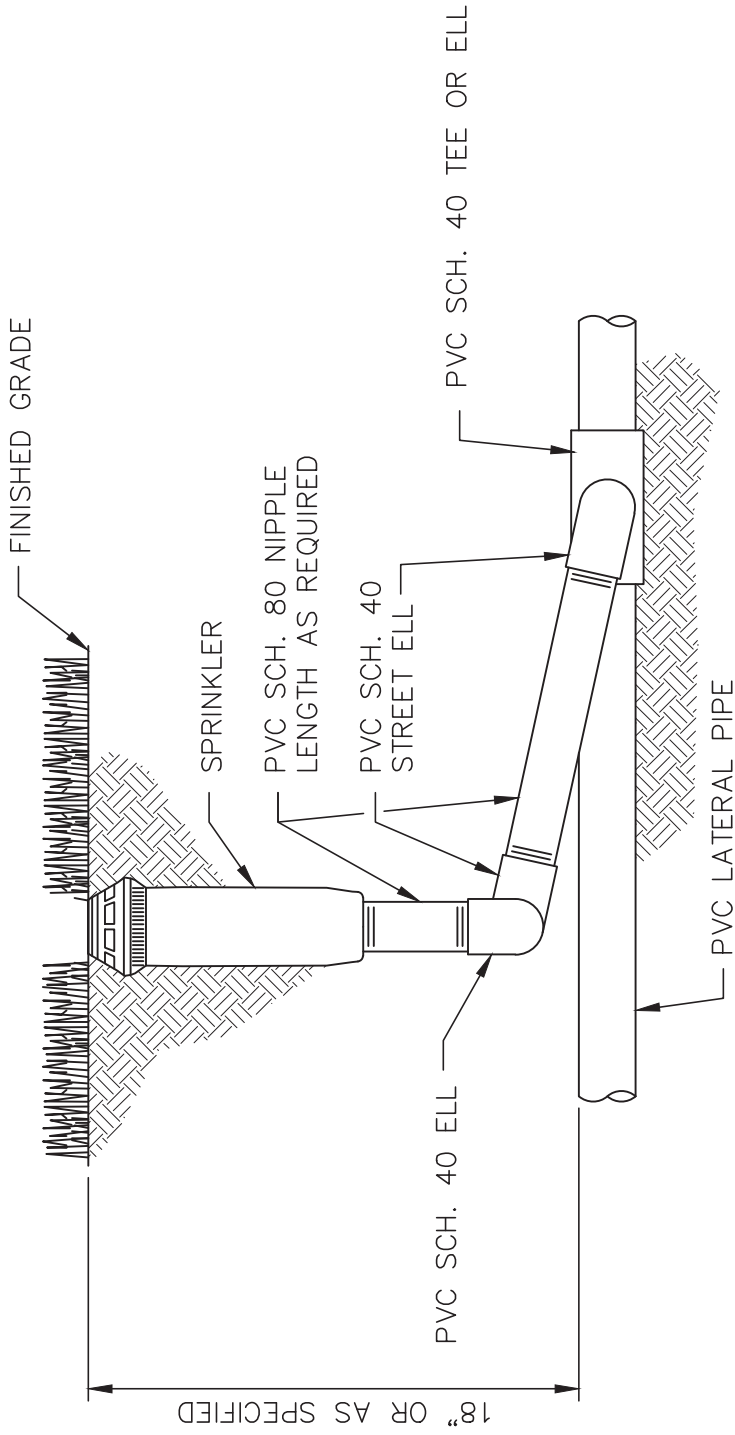
AIR RELIEF VALVE

APPROVED BY: *Paul F. Muldock*
 CITY ENGINEER


10/24/2018
 DATE

DRAWING NUMBER
L - 8



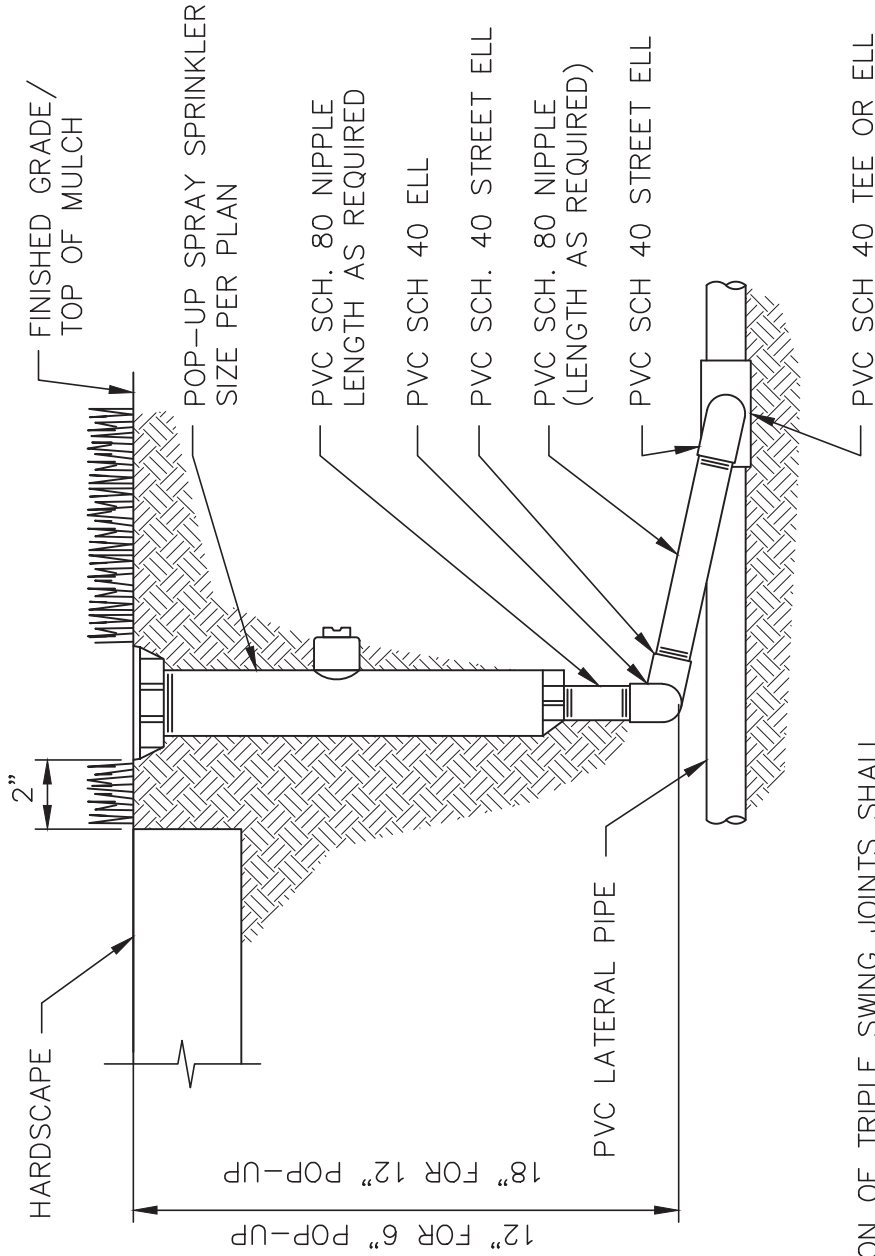


- NOTE:
1. INSTALLATION OF TRIPLE SWING JOINTS SHALL BE AT AN ANGLE NO GREATER THAN 45 DEGREES TO HORIZONTAL
 2. ALL PRE-MANUFACTURED TRIPLE SWING JOINTS SHALL BE MANUFACTURED WITH DORINGS AND SHALL BE RATED AT 200 PSI.

APPROVED BY: *Paul F. Muddick*
 CITY ENGINEER
 DATE: 10/24/2018
 DRAWING NUMBER: L-9


CITY OF ELK GROVE - PUBLIC WORKS
POP-UP ROTOR SPRINKLER


DATE:	NOT TO SCALE		
09/22/2007			
REVISION	BY	APPROVED	DATE



- NOTE:**
1. INSTALLATION OF TRIPLE SWING JOINTS SHALL BE AT AN ANGLE NO GREATER THAN 45 DEGREES TO HORIZONTAL
 2. ALL PRE-MANUFACTURED TRIPLE SWING JOINTS SHALL BE MANUFACTURED WITH DORINGS AND SHALL BE RATED AT 200 PSI.

APPROVED BY: *Robert M. Mudd*
 CITY ENGINEER
 DATE: 10/24/2018

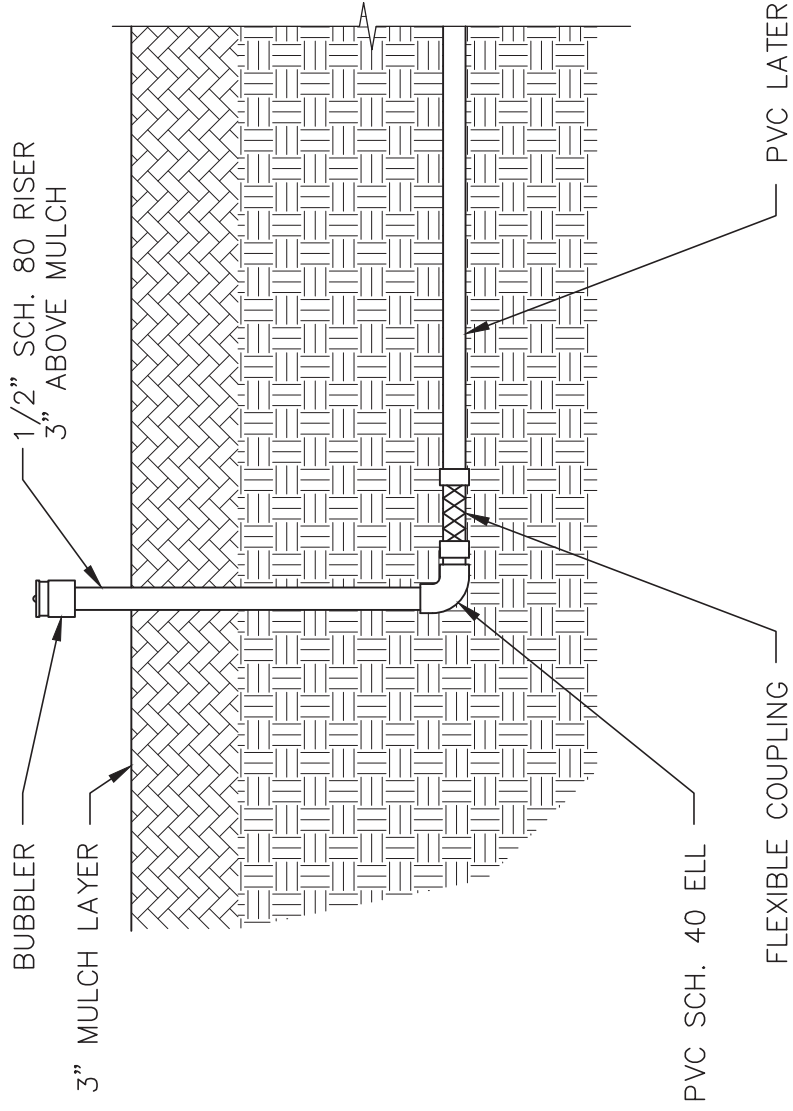
DRAWING NUMBER
L - 10



CITY OF ELK GROVE - PUBLIC WORKS


POP-UP SPRAY SPRINKLER

DATE:	NOT TO SCALE	
09/22/2007		
REVISION	APPROVED	DATE



APPROVED BY: *Paul F. Muldock*
 CITY ENGINEER
 DATE: 10/24/2018

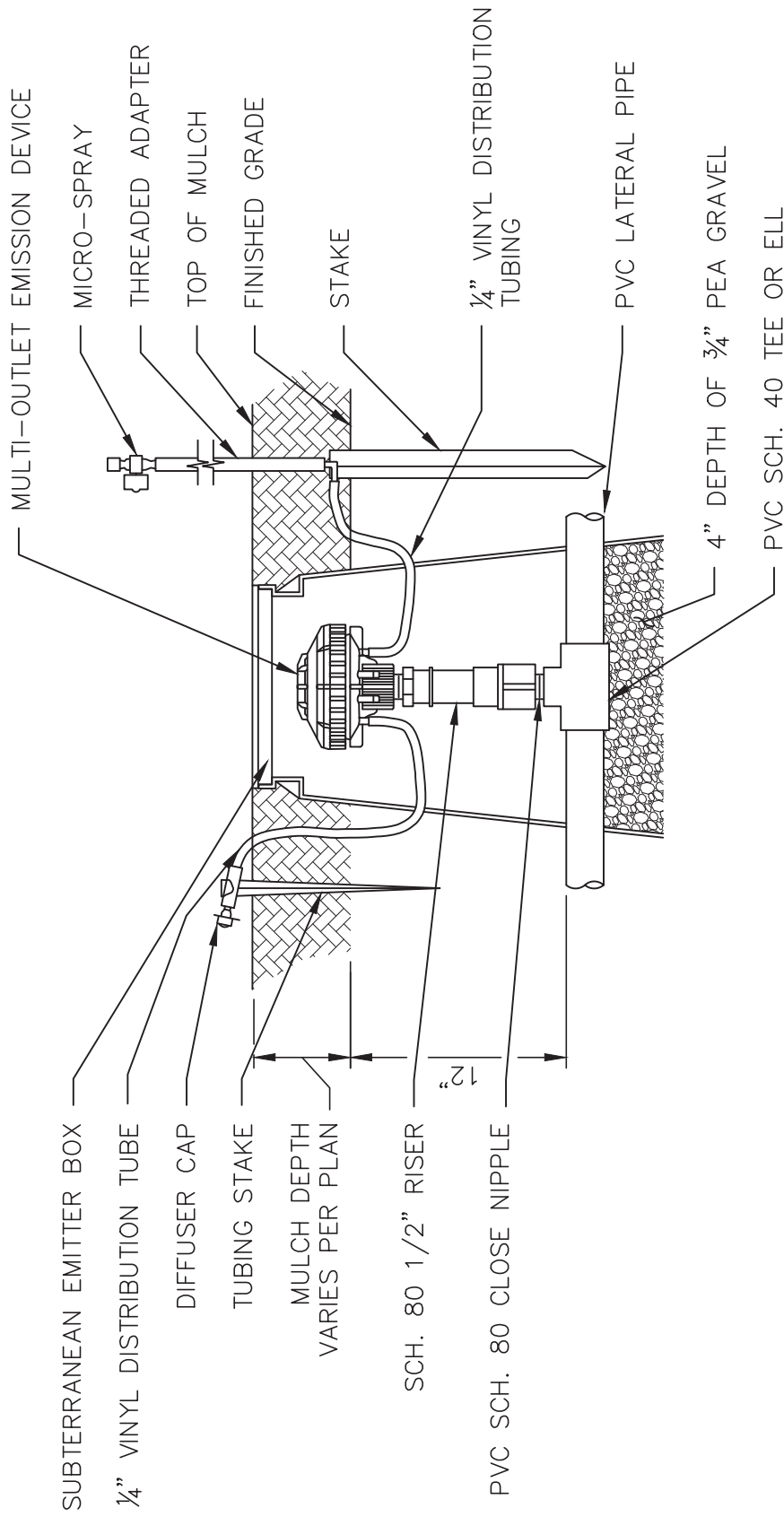
DRAWING NUMBER
L - 11



CITY OF ELK GROVE - PUBLIC WORKS

BUBBLER SPRINKLER HEAD

DATE:	NOT TO SCALE		
09/22/2007			
REVISION	BY	APPROVED	DATE




DATE:	NOT TO SCALE
09/22/2007	
REVISION	APPROVED
BY	DATE

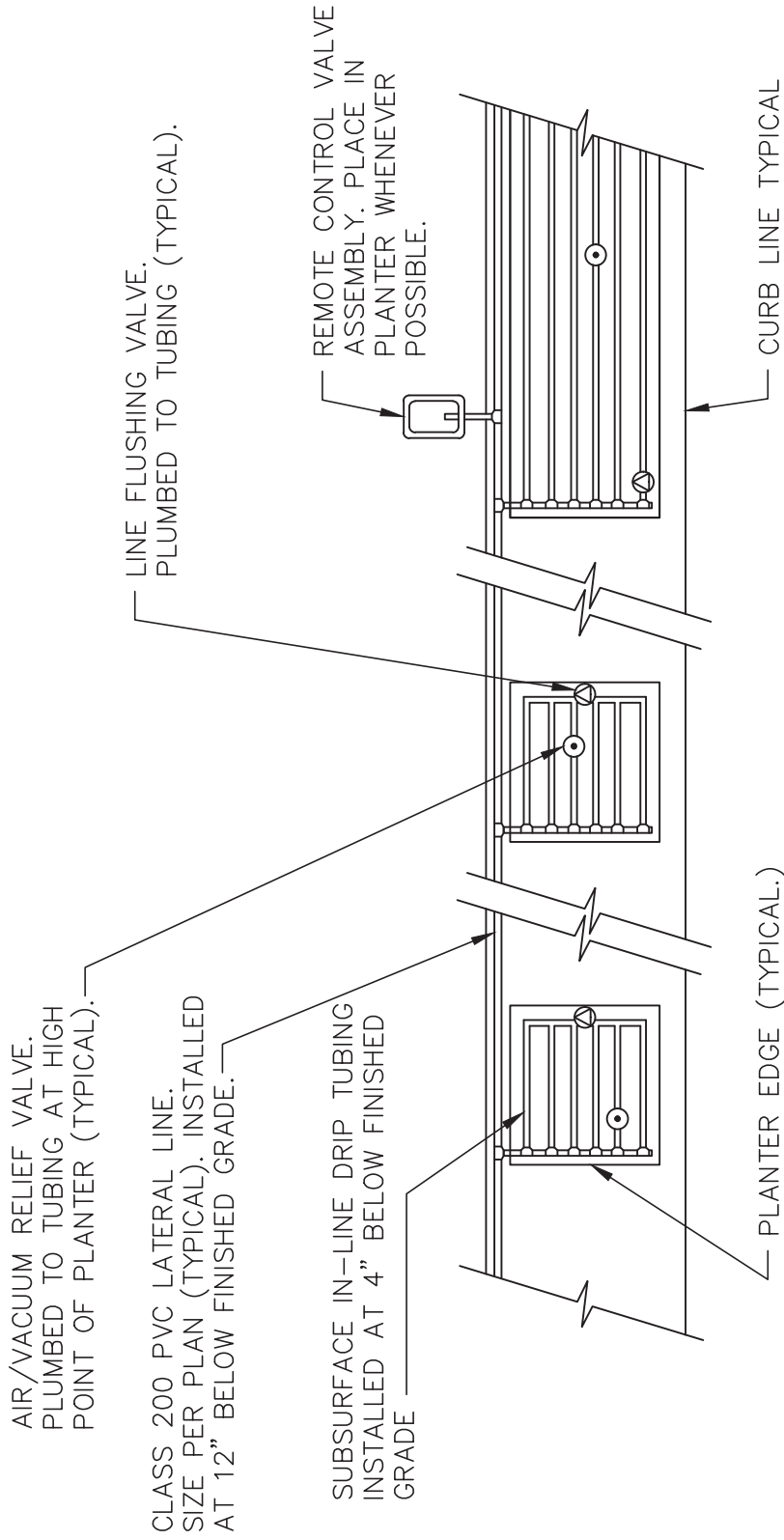
CITY OF ELK GROVE - PUBLIC WORKS

**DRIP IRRIGATION
MULTI-OUTLET EMITTER**

APPROVED BY: *Paul F. Mudd*
 CITY ENGINEER
 DATE: 10/24/2018

DRAWING NUMBER
L - 12





NOTE: ALL DRIP TUBING FITTINGS SHALL BE BARBED.

DATE: 09/22/2007	NOT TO SCALE
REVISION	DATE
BY	APPROVED


CITY OF ELK GROVE - PUBLIC WORKS

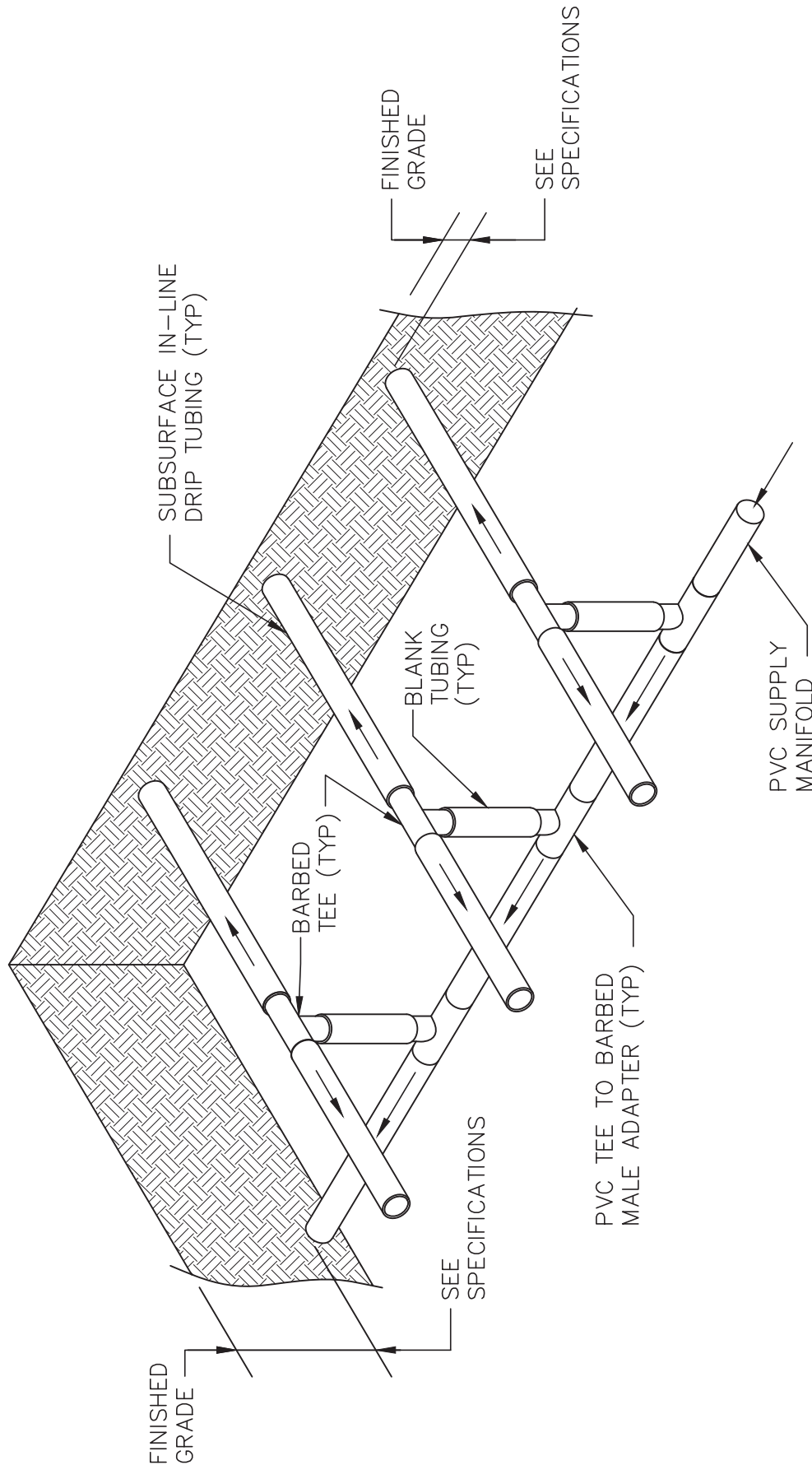
**SUBSURFACE IN-LINE
DRIP IRRIGATION LAYOUT**

APPROVED BY: *Paul F. Muddick*
CITY ENGINEER

10/24/2018
DATE

DRAWING NUMBER
L - 13



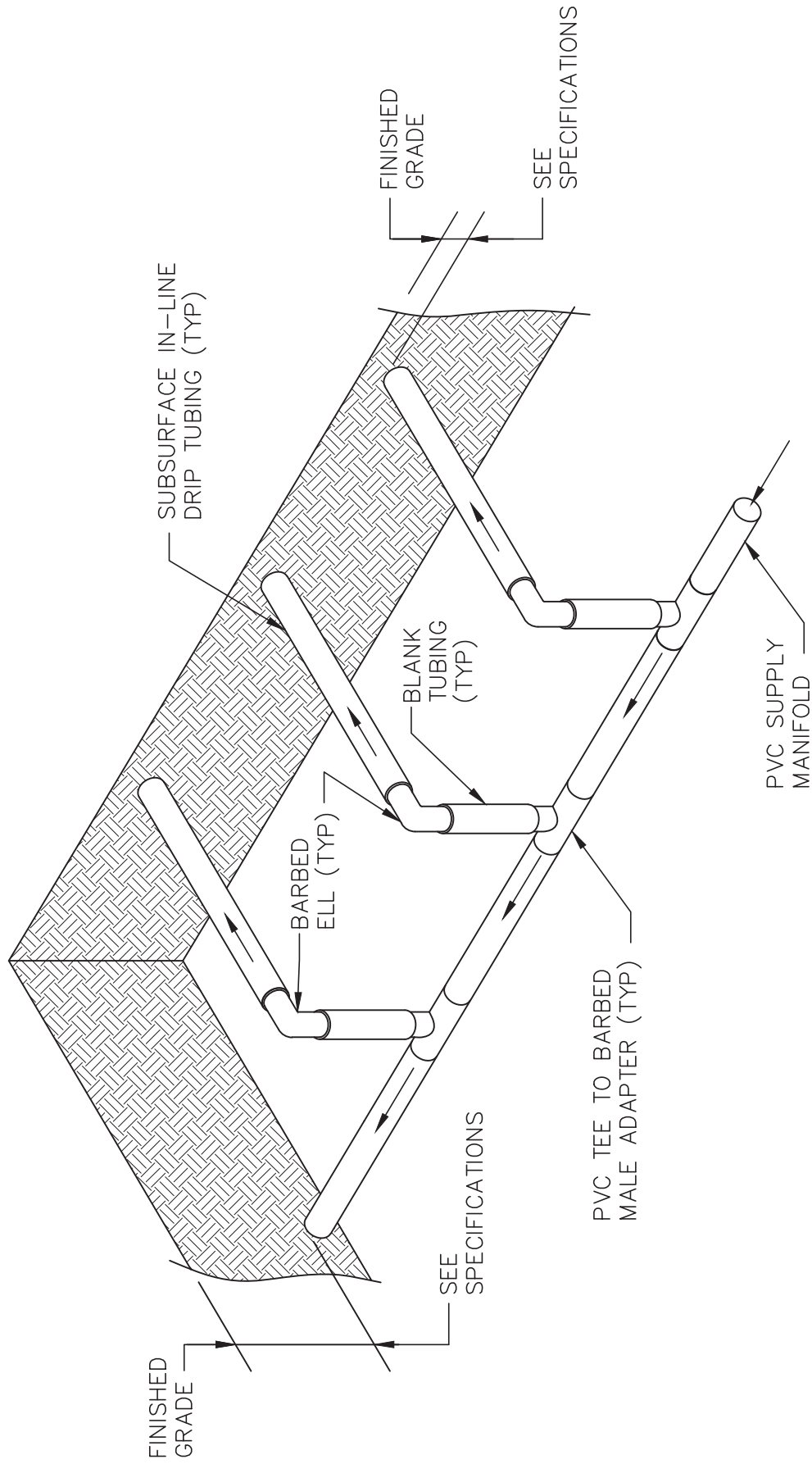


APPROVED BY: *Paul F. Muddick*
 CITY ENGINEER
 DATE: 10/24/2018
 DRAWING NUMBER: L - 14



CITY OF ELK GROVE - PUBLIC WORKS
**SUBSURFACE IN-LINE DRIP
 IRRIGATION CENTER-FEED
 SUPPLY MANIFOLD**

DATE:	NOT TO SCALE		
09/22/2007			
REVISION	BY	APPROVED	DATE



APPROVED BY: *Paul F. Muddick*
 CITY ENGINEER
 DATE: 10/24/2018

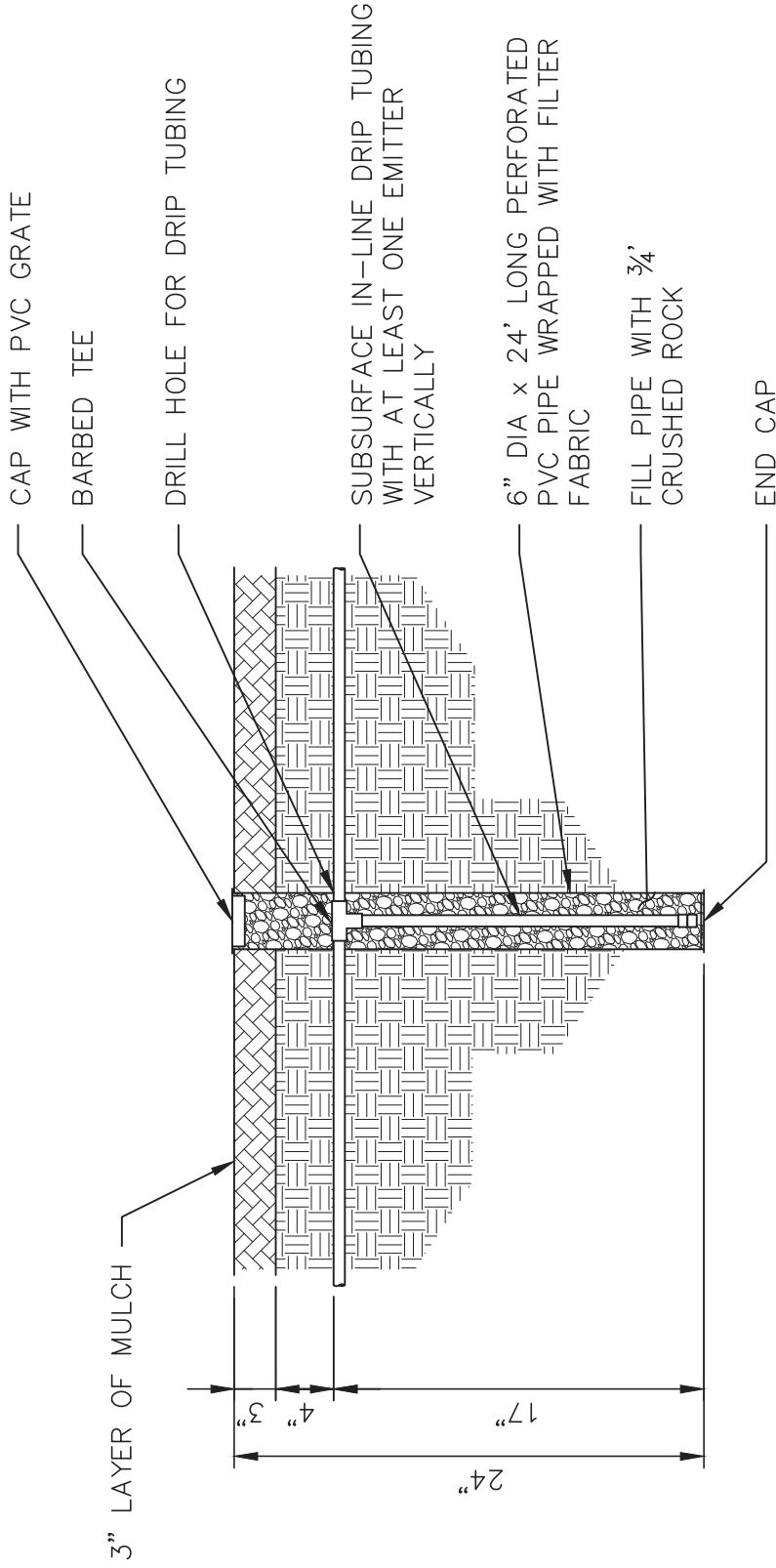


DRAWING NUMBER
L - 15

CITY OF ELK GROVE - PUBLIC WORKS

**SUBSURFACE IN-LINE DRIP
 IRRIGATION END-FEED
 SUPPLY MANIFOLD**

DATE:	NOT TO SCALE		
09/22/2007			
REVISION	BY	APPROVED	DATE



APPROVED BY: *Paul F. Muldock*
 CITY ENGINEER
 DATE: 10/24/2018

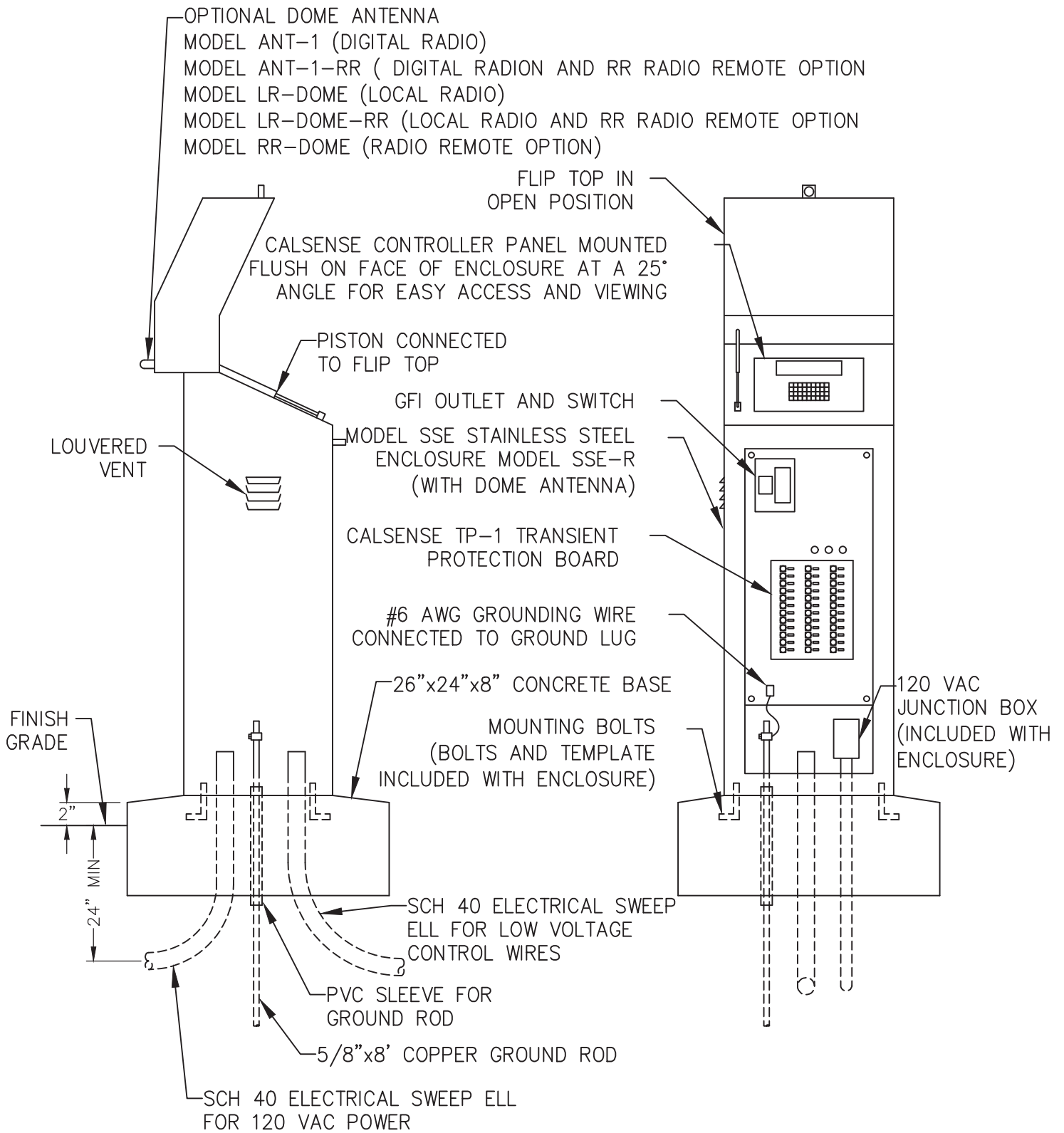


DRAWING NUMBER
L - 16

CITY OF ELK GROVE - PUBLIC WORKS

**DEEP WATERING PIPE
 FOR TREES**

DATE:	NOT TO SCALE		
09/22/2007			
REVISION	BY	APPROVED	DATE



DATE: 09/22/2017		NOT TO SCALE	
REVISION	BY	APPROVED	DATE


CITY OF ELK GROVE - PUBLIC WORKS

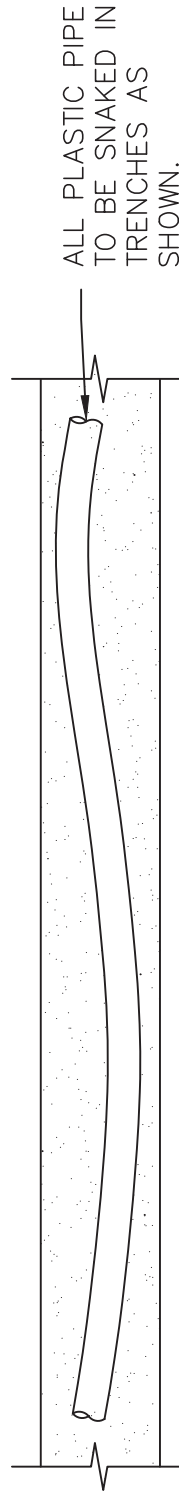
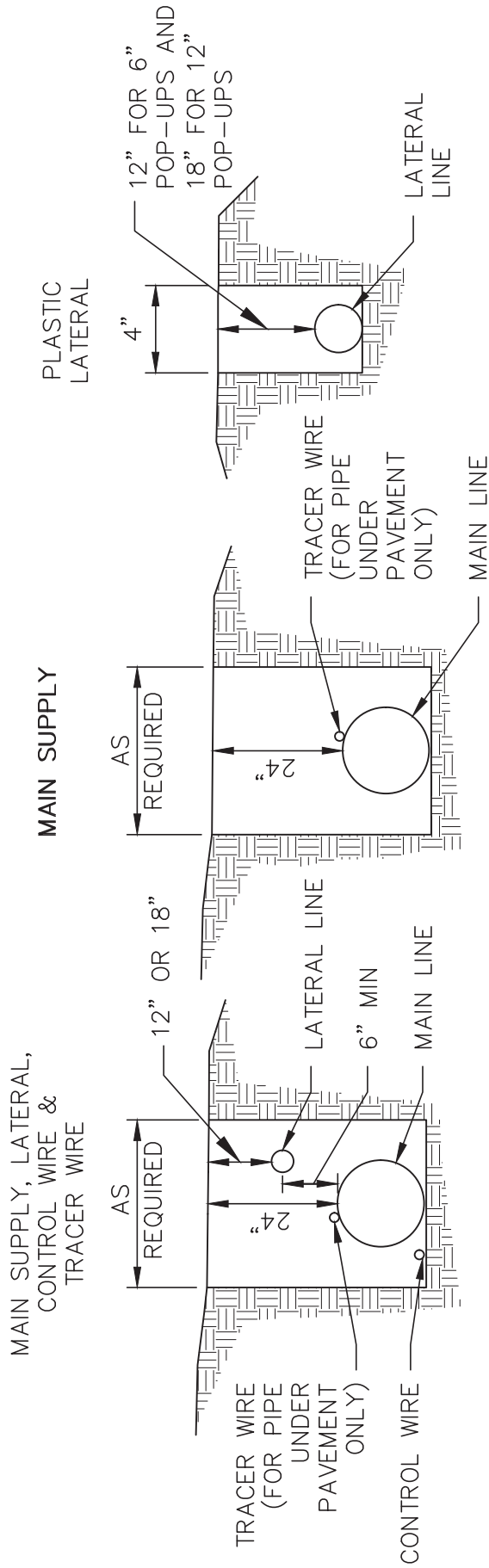
IRRIGATION CONTROLLER ENCLOSURE

APPROVED BY:
Paul M. Muddoch
 CITY ENGINEER

10/24/2018
 DATE

DRAWING NUMBER
L - 17





PLAN

NOTES:

1. ALL TRENCH DEPTHS ARE MEASURED FROM TOP OF FINISH GRADE.
2. TRACER WIRE SHALL BE REQUIRED ONLY WHEN PIPES ARE INSTALLED UNDER PAVEMENT.
3. ALL PIPE TO BE INSTALLED IN ACCORDANCE WITH MANUFACTURERS INSTALLATION SPECIFICATIONS.
4. IF SPRINKLER HEAD AND NIPPLE HEIGHT EXCEED 11" LATERAL LINE DEPTH SHALL BE 18".
5. INSTALL PIPE BEDDING UNDER PIPING, WHEN SPECIFIED.
6. INSTALL SLEEVING UNDER PAVING PER PLANS.


DATE: 09/22/2007	NOT TO SCALE
REVISION BY	APPROVED DATE

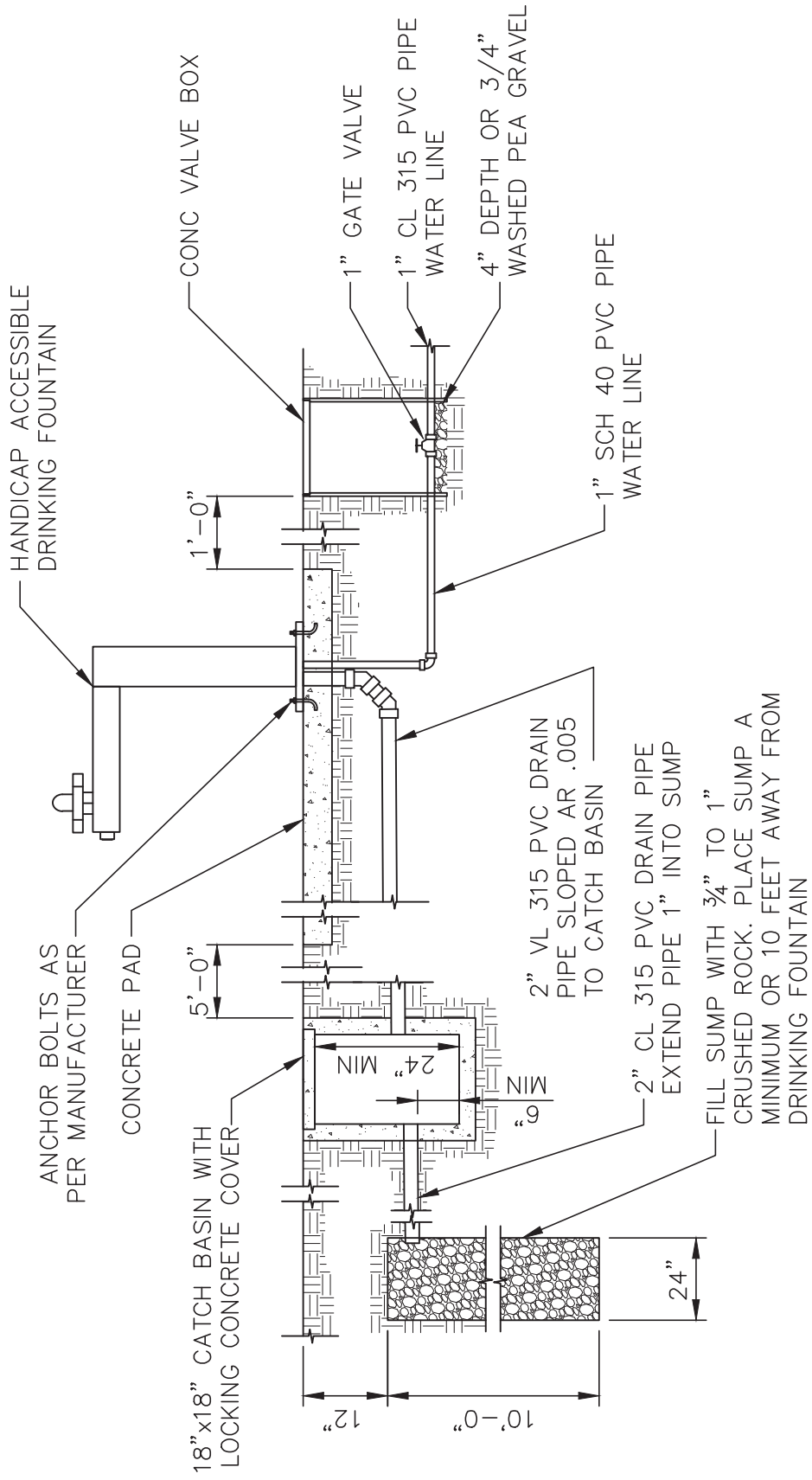
CITY OF ELK GROVE - PUBLIC WORKS

**IRRIGATION SYSTEM
TRENCHING**

APPROVED BY: *Paul F. Muddick* 10/24/2018 DATE
CITY ENGINEER

DRAWING NUMBER
L - 18





DATE:	NOT TO SCALE
09/22/2007	
REVISION	APPROVED
	DATE

APPROVED BY: *Paul F. Muddick*

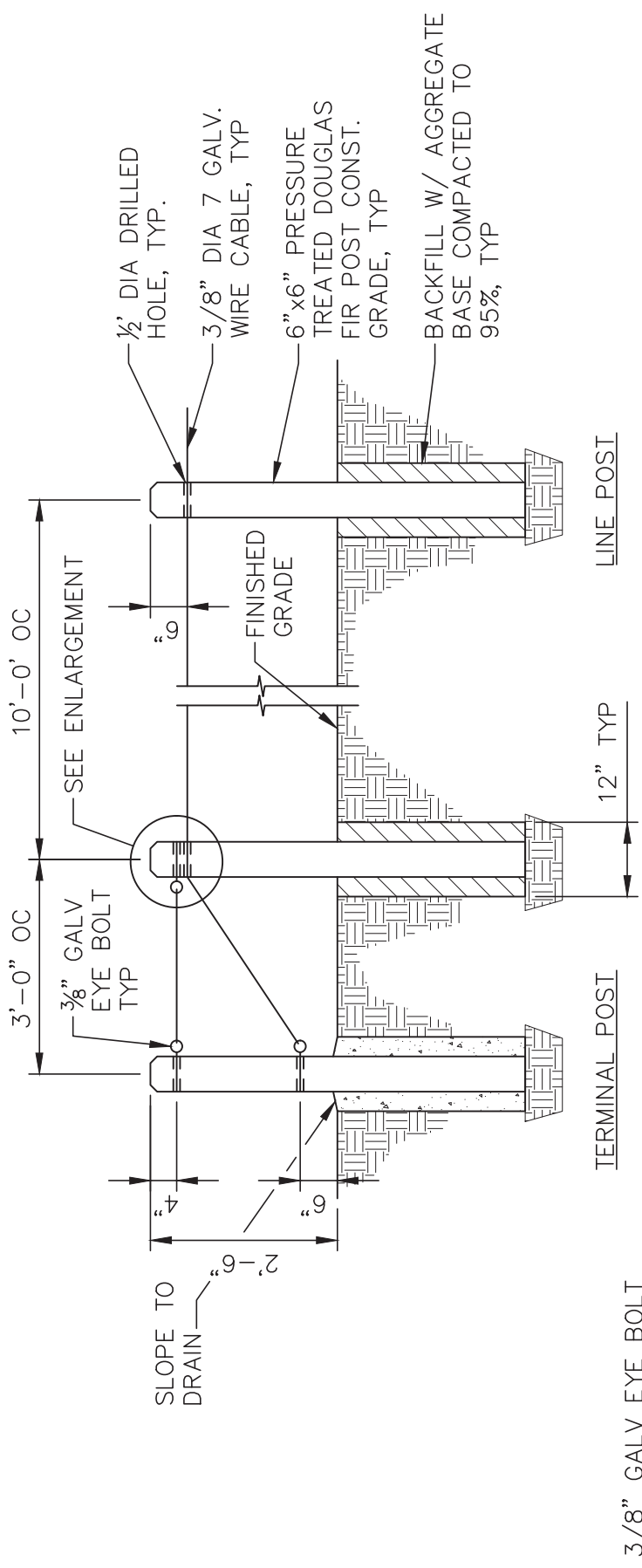
CITY ENGINEER

DATE: 10/24/2018

CITY OF ELK GROVE - PUBLIC WORKS

DRAWING NUMBER: L - 19

CITY OF ELK GROVE - VINOCA CALIF.



TERMINAL POST

LINE POST

3/8" GALV EYE BOLT
W/ GALV WASHERS &
NUT

3/8" GALV CABLE W/
GALV CLAMP
USE CLAMPS FOR
CONNECTIONS AND
SPLICES

1' BEVEL AT 45 DEGREES
ALL AROUND

COUNTERSINK NUT

3/8" DIA 7 STRAND GALV
WIRE CABLE W/ 1/2" DIA
DRILLED HOLE IN POST

ENLARGEMENT

NOTE: CONCRETE FOOTING SHALL BE INSTALLED
AT ALL TERMINAL POSTS AND AT ALL BENDS

DATE:	NOT TO SCALE	
09/22/2007		
REVISION	APPROVED	DATE

CITY OF ELK GROVE - PUBLIC WORKS

APPROVED BY: *Paul F. Muddick*
CITY ENGINEER

DATE: 10/24/2018

DRAWING NUMBER: **L - 20**

POST AND CABLE FENCING



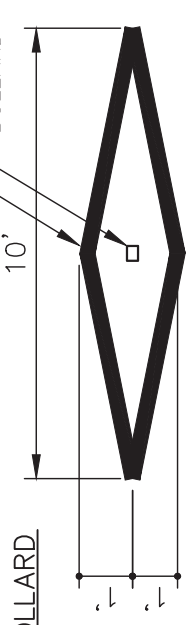
5'-0" CLEARANCE MAX.
OR AS SPECIFIED ON PLAN

2 1/4" RUBBER HIGH PRESSURE HOSE SECURED TO STEEL TUBE WITH A 1/4" HEX BOLT, WASHER AND NUT.
2 1/2" X 2 1/2" STEEL TUBE, 3/16" THICK. PAINT WITH 2 COATS OF PRIMER YELLOW PAINT.
SEE DETAIL A
DRILL 5/8" DIA. HOLE WITH 1/2" DIA. HEX HEAD BOLT FOR SWIVEL. TACK WELD BOTH SIDES OF BOLT.

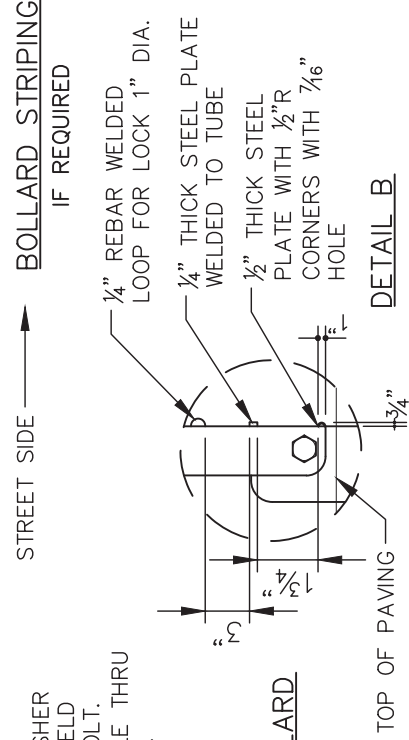
3" X 4" X 16" LONG 3/16" THICK STEEL TUBING. PAINT ABOVE GROUND PORTION.
PAVING
#4 REBAR WELDED TO TUBING, BOTH SIDES
CONCRETE FOOTING

3" X 4" X 16" LONG 3/16" THICK STEEL TUBING. PAINT ABOVE GROUND PORTION.
PAVING
#4 REBAR WELDED TO TUBING, BOTH SIDES
CONCRETE FOOTING

KNOCK-DOWN BOLLARD
FRONT VIEW



KNOCK-DOWN BOLLARD
SIDE VIEW

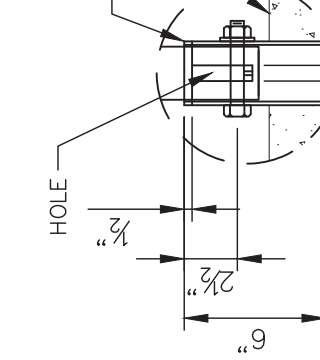
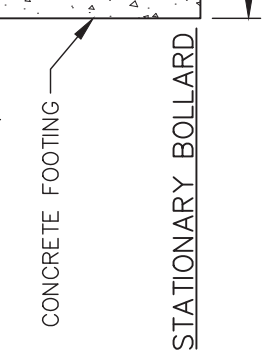


DETAIL B

3/16" STEEL PLATE WELDED TO TUBE AND GROUND SMOOTH
3" YELLOW HIGH INTENSITY RETRO-REFLECTIVE TAPE (TYP)
2 1/2" X 2 1/2" STEEL TUBE 3/16" THICK. PAINTED WITH 2 COATS OF PRIMER AND INSIGNIA YELLOW.

FINISH SURFACE
CONCRETE FOOTING

STATIONARY BOLLARD
12"



HOLE
WELD 1/4" THICK STEEL PLATE TO TOP OF TUBE
TOP OF PAVING
HOLE
WELD 1/4" THICK STEEL PLATE TO TUBE (TYP)
TOP OF PAVING

DETAIL A

DATE:	09/22/2007	NOT TO SCALE
REVISION BY	APPROVED	DATE

CITY OF ELK GROVE - PUBLIC WORKS

KNOCK-DOWN BOLLARD AND STATIONARY BOLLARD

APPROVED BY: *Robert M. ...*
CITY ENGINEER
DATE: 10/24/2018



DRAWING NUMBER
L-21

$\frac{3}{16}$ " STEEL PLATE WELDED TO POST & GROUND SMOOTH

3" YELLOW HIGH INTENSITY RETRO-REFLECTIVE TAPE (TYP)

2- $\frac{1}{2}$ " DIA. GALVANIZED STEEL POST. PAINTED WITH 2 COATS OF PRIMER AND INSIGNIA YELLOW

$\frac{3}{4}$ " DIA. STEEL PIN W/ HEAD W/ $\frac{3}{8}$ " DIA HOLE FOR LOCK

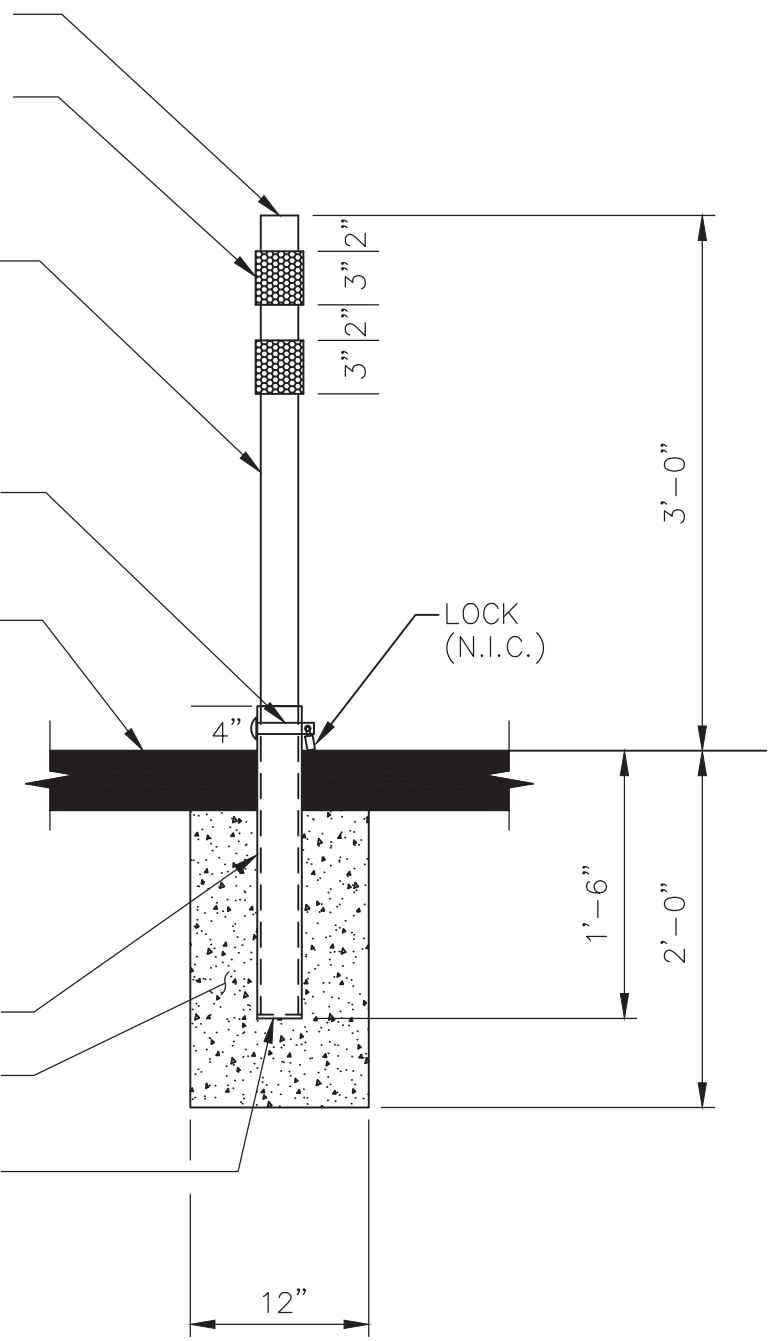
FINISH SURFACE

LOCK (N.I.C.)

3" DIA. GALVANIZED STEEL PIPE SLEEVE (PAINT ABOVE GROUND PORTION SAME AS POST)

CONCRETE FOOTING

$\frac{3}{16}$ " STEEL PLATE WELDED TO SLEEVE



NOTE: DRILL A $1\frac{3}{16}$ " DIA HOLE THRU BOTH THE POST AND SLEEVE FOR PIN PLACEMENT

DATE: 09/22/2017		NOT TO SCALE	
REVISION	BY	APPROVED	DATE

CITY OF ELK GROVE - PUBLIC WORKS

APPROVED BY:
Paul Muroch
CITY ENGINEER
10/24/2018
DATE

REMOVABLE BOLLARD



DRAWING NUMBER

L - 22

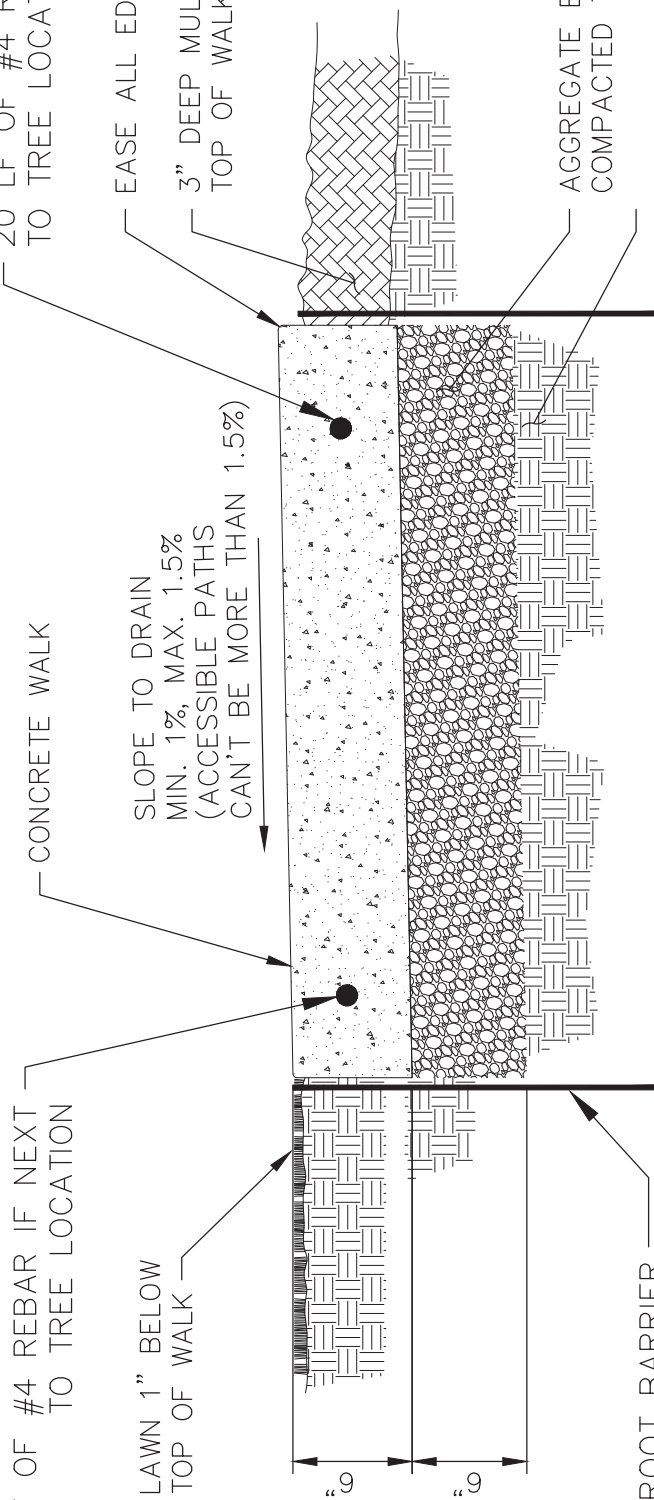
20 LF OF #4 REBAR IF NEXT TO TREE LOCATION

EASE ALL EDGES TO 1/2" R
 3" DEEP MULCH 1' BELOW TOP OF WALK

AGGREGATE BASE PER SPEC COMPACTED TO 95%
 SUBGRADE COMPACTED TO 90%

CONCRETE WALK

SLOPE TO DRAIN MIN. 1%, MAX. 1.5% (ACCESSIBLE PATHS CAN'T BE MORE THAN 1.5%)



24" ROOT BARRIER IF NEXT TO TREE LOCATION, TYP.

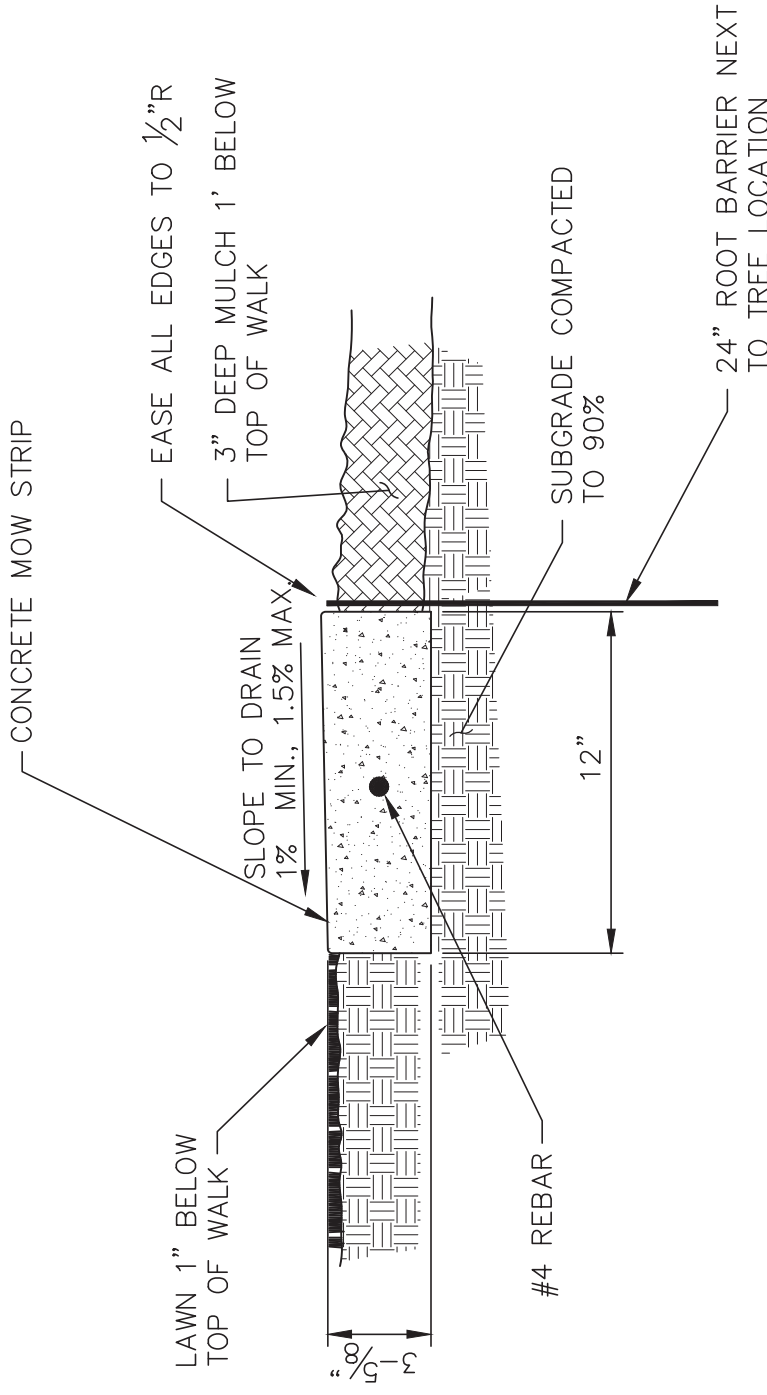
NOTES:

1. PROVIDE 25% OF THICKNESS OR 1.5" DEEP SCORE JOINTS AT 10'-0" ON CENTER.
2. PROVIDE EXPANSION JOINTS AT 20'-0" INTERVALS.
3. CLASS "B" CONCRETE.
4. MEDIUM BROOM FINISH PERPENDICULAR TO WALK EDGE UNLESS OTHERWISE SPECIFIED.
5. PROVIDE FULL DEPTH FELT EXPANSION JOINTS WHEN ABUTTING WALKS, WALLS AND BUILDINGS.

APPROVED BY: *Robert M. ...* 02/17/2021 DATE
 CITY ENGINEER
 CITY OF ELK GROVE, CALIF. DRAWING NUMBER
L - 23

CITY OF ELK GROVE - PUBLIC WORKS
CONCRETE WALK
(IN PARK AREAS, NOT FRONTAGE AREAS)

DATE	NOT TO SCALE		
09/22/2007			
REVISION	BY	APPROVED	DATE
01	KB	JRW	02/16/2021

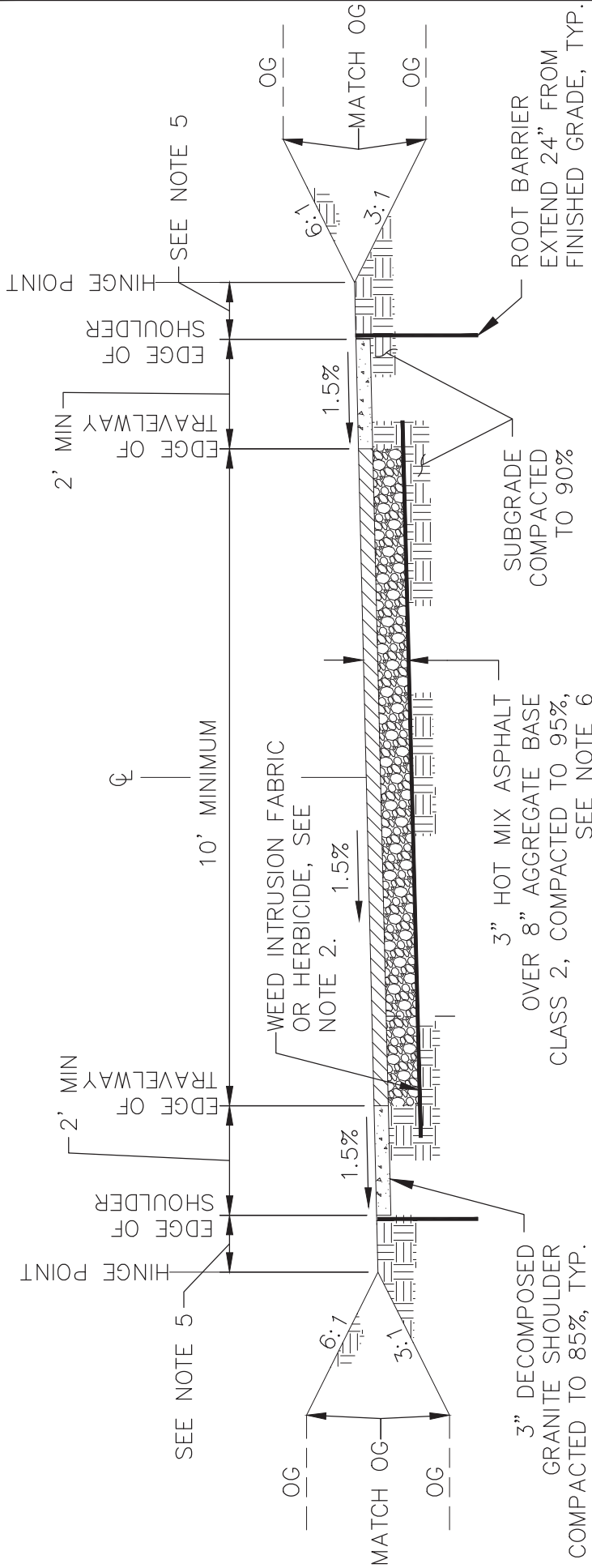


- NOTES:
1. PROVIDE 1" DEEP SCORE JOINTS AT 10'-0" ON CENTER.
 2. PROVIDE EXPANSION JOINTS AT 20'-0" INTERVALS.
 3. CLASS "B" CONCRETE.
 4. MEDIUM BROOM FINISH UNLESS OTHERWISE SPECIFIED.
 5. PROVIDE FULL DEPTH FELT EXPANSION JOINTS WHEN ABUTTING WALKS, WALLS AND BUILDINGS.

APPROVED BY: *Paul F. Muddick*
 CITY ENGINEER
 DATE: 10/24/2018
 DRAWING NUMBER: L - 24

CITY OF ELK GROVE - PUBLIC WORKS	
CONCRETE MOW STRIP	
DATE:	NOT TO SCALE
09/22/2007	
REVISION BY:	APPROVED DATE





NOTES:

1. APPLY PRE-EMERGENT HERBICIDE UNDER DECOMPOSED GRANITE PRIOR TO INSTALLING IT.
2. APPLY PRE-EMERGENT HERBICIDE OR WEED INTRUSION FABRIC TO AGGREGATE BASE PRIOR TO PAVING ASPHALT CONCRETE.
3. APPLY A 4" WIDE SOLID THERMOPLASTIC YELLOW CENTERLINE STRIPE CONTINUOUSLY DOWN THE CENTER OF THE BIKE TRAIL.
4. A MINIMUM 3-FOOT HORIZONTAL CLEARANCE FROM THE PAVED EDGE OF A BIKE PATH TO OBSTRUCTIONS SHALL BE PROVIDED.
5. FOR TRAILS PARALLEL AND ADJACENT TO CITY STREET, THE TRAIL EDGE OF TRAVELED WAY SHALL BE 5' MINIMUM FROM THE ROADWAY EDGE OF SHOULDER OR 5' MINIMUM FROM THE ROADWAY TOP FACE OF CURB WHICHEVER IS GREATER.
6. A GEOTECHNICAL RECOMMENDATION IS REQUIRED FOR AN R-VALUE OF LESS THAN 50 TO PROVIDE A DESIGN LIFE OF 20 YEARS AND A TI OF 5.

APPROVED BY: *Robert M. ...* 02/17/2021
 CITY ENGINEER DATE

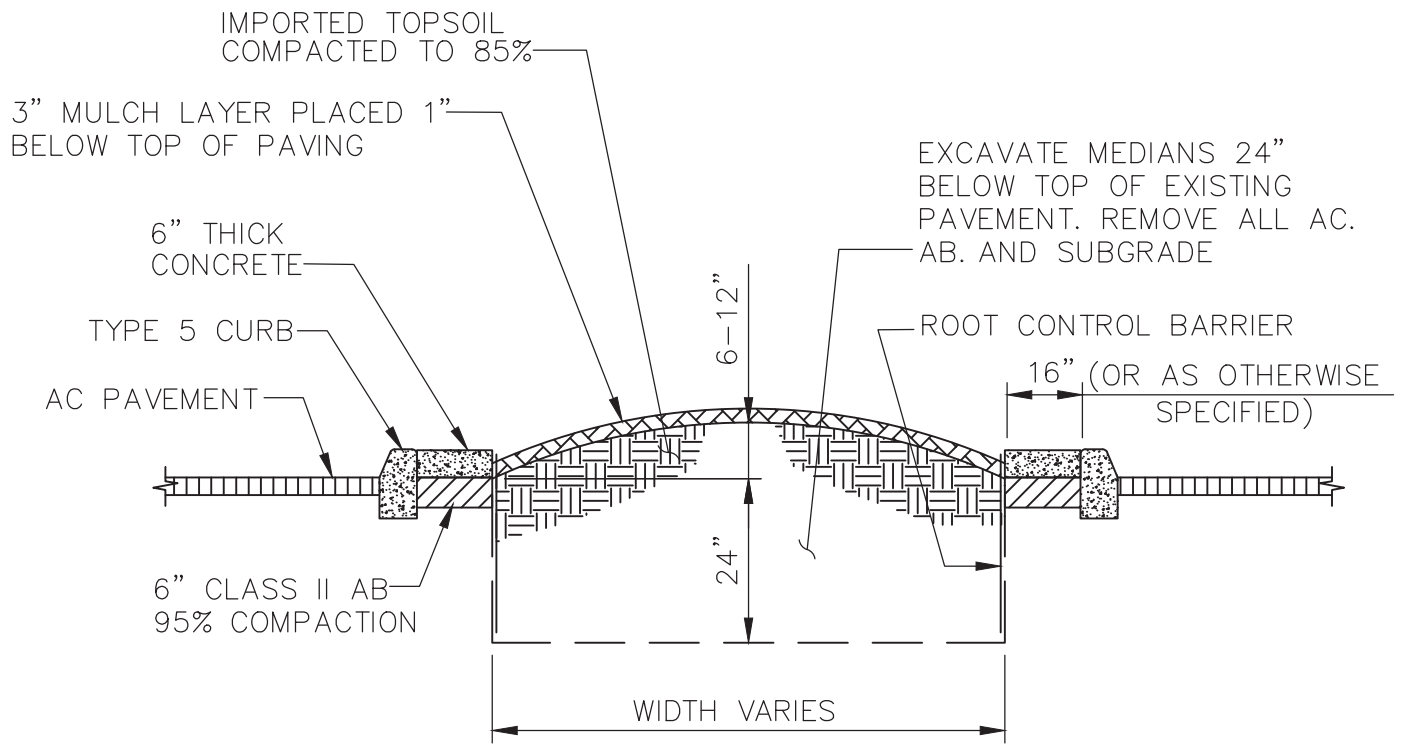
CITY OF ELK GROVE, CALIFORNIA

DRAWING NUMBER
L - 25

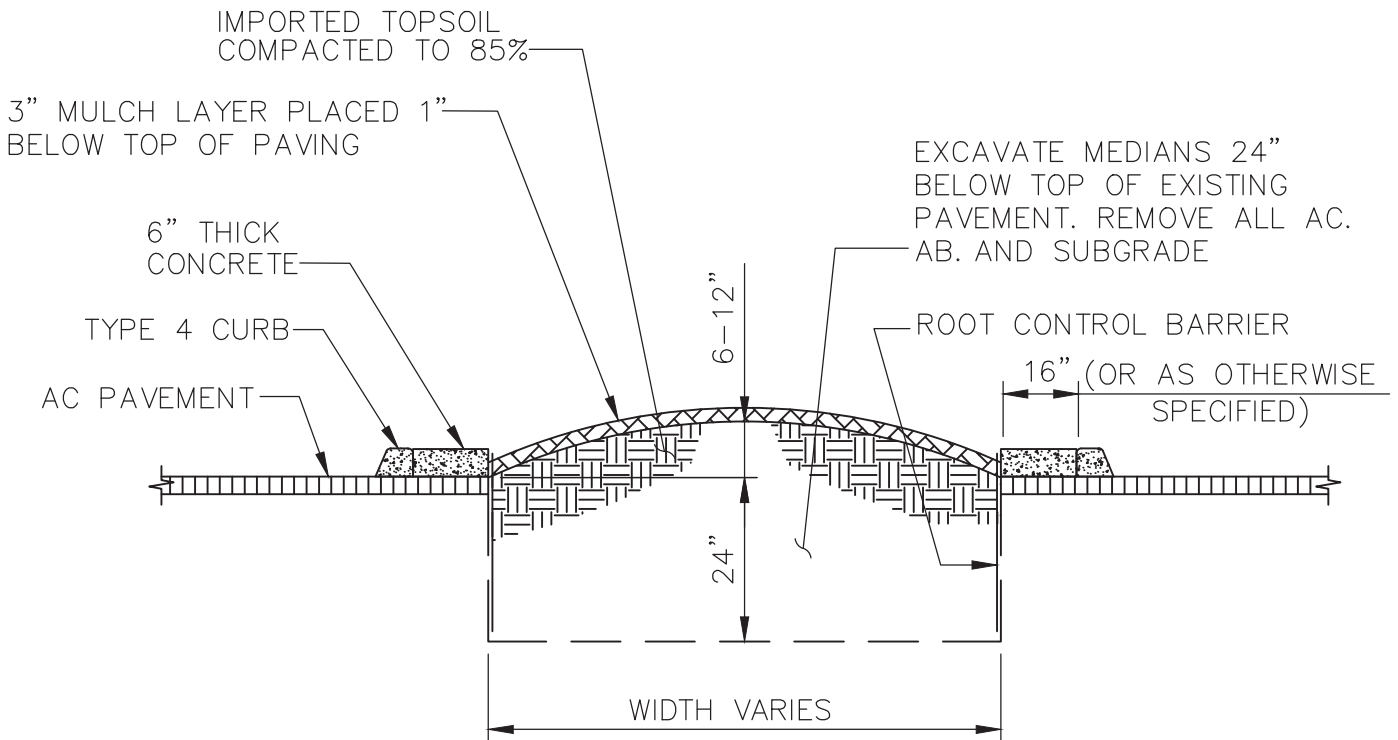
CITY OF ELK GROVE - PUBLIC WORKS

BIKE TRAIL PAVING SECTION

DATE	NOT TO SCALE	
09/22/2007		
REVISION	APPROVED	DATE
01	KB JRW	02/16/2021



TYPE 5 CURB



TYPE 4 CURB

NOTE: CONTOUR OF MEDIAN WILL VARY DEPENDING UPON MEDIAN WIDTH. DO NOT EXCEED BID QUANTITY OF IMPORTED TOPSOIL TO ACHIEVE 12" HEIGHT.

DATE: 09/22/2017		NOT TO SCALE	
REVISION	BY	APPROVED	DATE

CITY OF ELK GROVE - PUBLIC WORKS

APPROVED BY:

Paul M. Muelich

10/24/2018

CITY ENGINEER

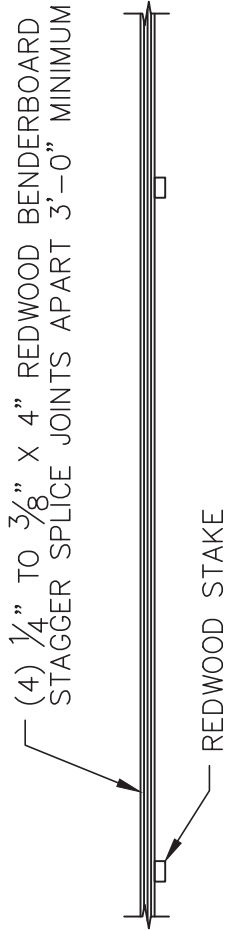
DATE

ROADWAY MEDIAN SECTION

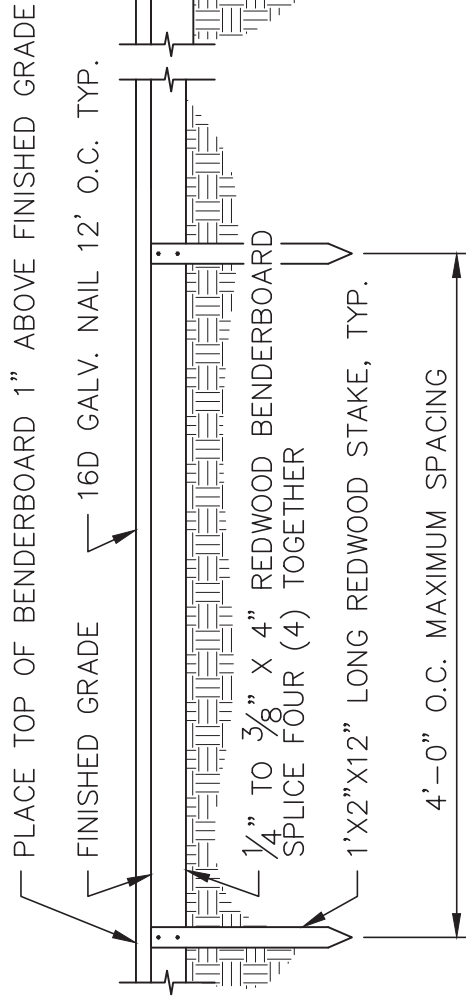


DRAWING NUMBER

L - 26

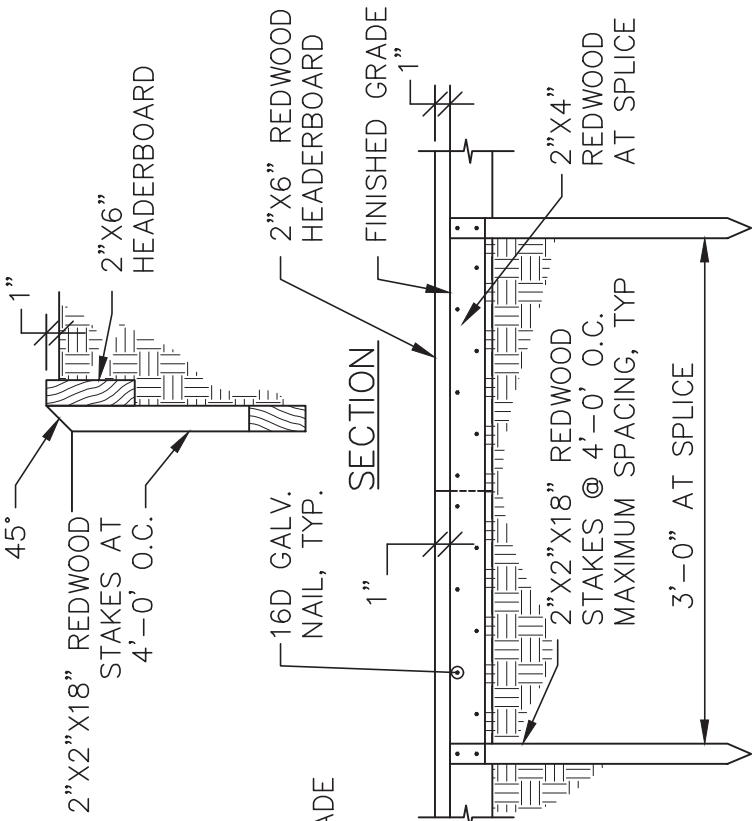


BENDERBOARD PLAN VIEW



ELEVATION VIEW

1/4\"/>



SECTION

2\"/>

NOTES:

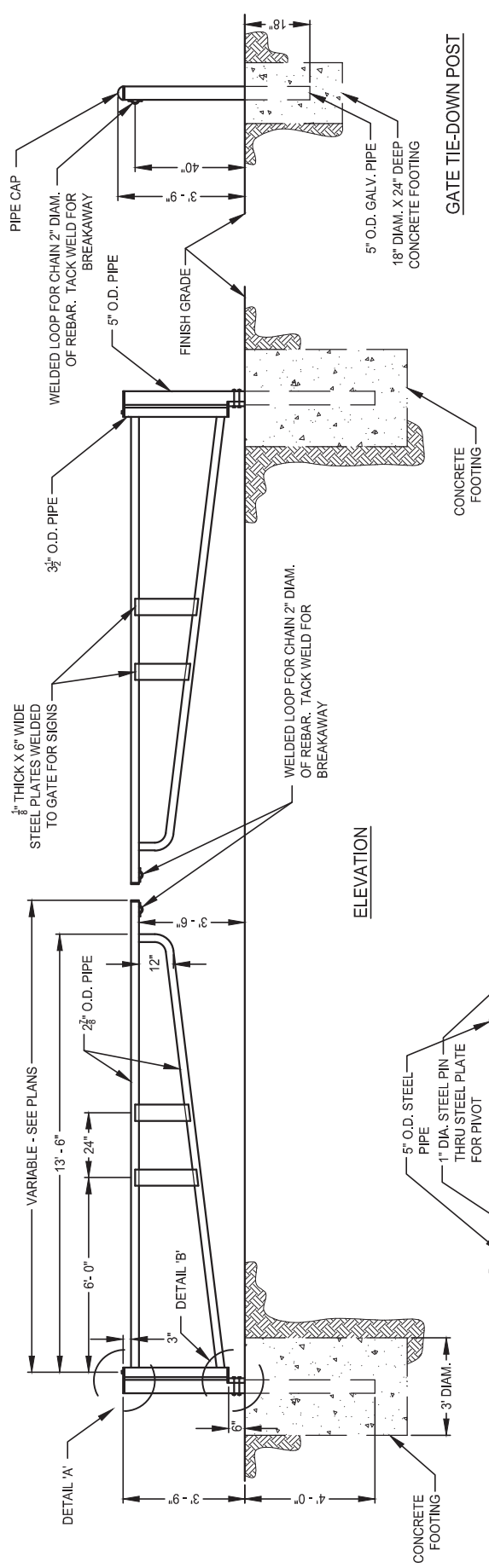
1. INSTALL ALL STAKES AND SPLICES ON PLANTING SIDE OF HEADERBOARD.
2. ALL NAILS SHALL BE GALVANIZED.
3. ALL REDWOOD SHALL BE ROUGH CONSTRUCTION COMMON GRADE IN ACCORDANCE TO CALIFORNIA REDWOOD ASSOCIATION GRADING RULES. DRIVE STAKES TO RESISTANCE AND CUT TOP AT 45 DEGREE ANGLE.

DATE: 09/22/2007	NOT TO SCALE
REVISION BY	APPROVED DATE

CITY OF ELK GROVE - PUBLIC WORKS

REDWOOD HEADERBOARD

APPROVED BY: *Paul F. Muddick*
 CITY ENGINEER
 DATE: 10/24/2018
 DRAWING NUMBER: **L - 27**

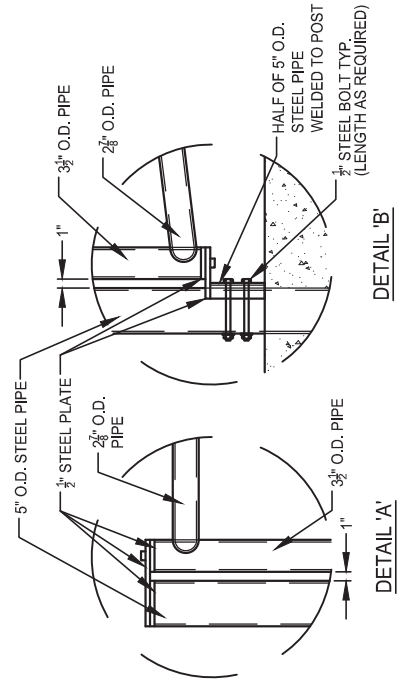


ELEVATION

GATE TIE-DOWN POST



TOP VIEW



DETAIL 'B'


DETAIL 'A'

NOTES:

1. DOUBLE PIPE GATES SHALL BE USED FOR ROADWAYS OR DRIVEWAYS OVER 24' WIDE OPENING.
2. ALL PIPES SHALL BE BLACK STEEL PIPES, OUTSIDE DIAMETER (O.D.) AND WELDED.
3. ALL STEEL TO BE PAINTED WITH 2 COATS OF PRIMER AND INSIGNIA YELLOW.
4. PROVIDE TWO (2) 5" O.D. PIPES AND INSTALL WITH CONCRETE FOOTING (18" X 24" D) FOR TIE-DOWN WHEN GATE IS OPENED AND CLOSED.

APPROVED BY: *Paul Muldock*
 CITY ENGINEER
 DATE: 10/24/2018

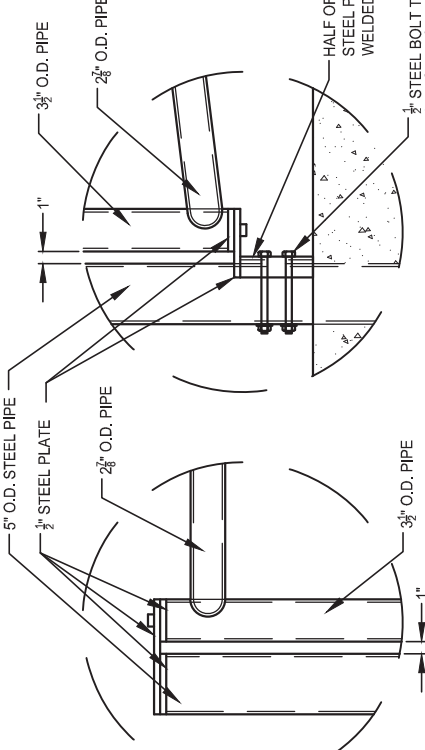
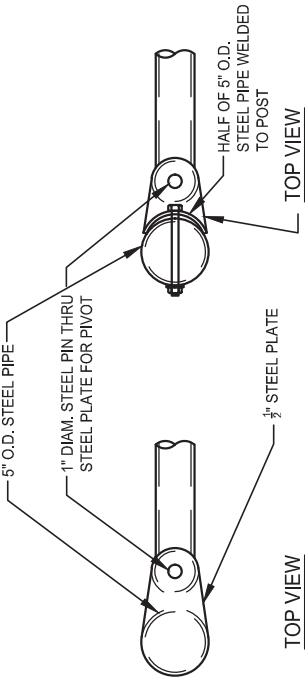
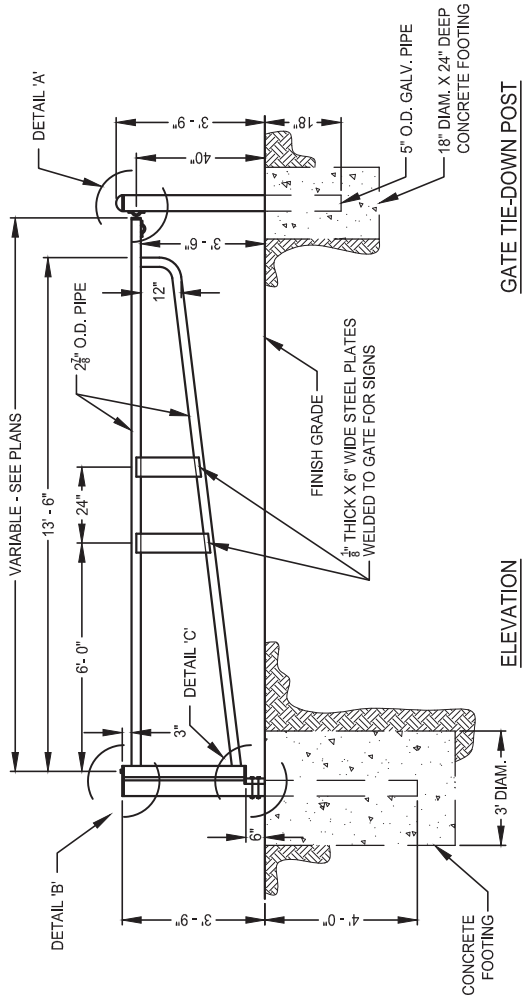
DRAWING NUMBER
L - 28



CITY OF ELK GROVE - PUBLIC WORKS

DOUBLE PIPE GATE

DATE:	NOT TO SCALE	
09/22/2007		
REVISION	APPROVED	DATE



NOTES:

1. SINGLE PIPE GATE SHALL BE USED FOR ROADWAYS OR DRIVEWAYS UP TO 24' WIDE MAXIMUM OPENING.
2. ALL PIPES SHALL BE BLACK STEEL PIPES, OUTSIDE DIAMETER (O.D.) AND WELDED.
3. ALL STEEL TO BE PAINTED WITH 2 COATS OF PRIMER AND INSIGNIA YELLOW.
4. PROVIDE TWO (2) 5" O.D. PIPES AND INSTALL WITH CONCRETE FOOTING (18" X 24" D) FOR TIE-DOWN WHEN GATE IS OPENED AND CLOSED.

DETAIL 'A'

DETAIL 'B'

DETAIL 'C'

DATE:	NOT TO SCALE	
09/22/2007		
REVISION	APPROVED	DATE

CITY OF ELK GROVE - PUBLIC WORKS

SINGLE PIPE GATE

APPROVED BY: *Paul J. Mudd*
 CITY ENGINEER
 DATE: 10/24/2018
 DRAWING NUMBER: **L - 29**

