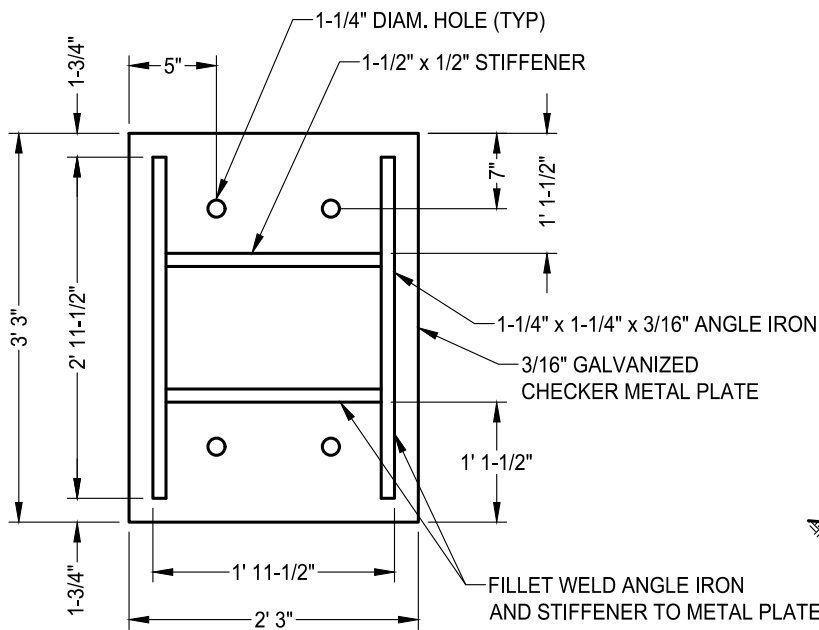
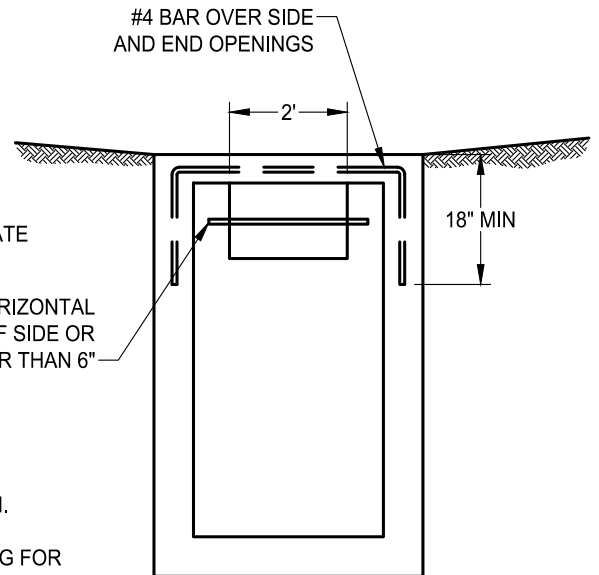


SECTION A-A



METAL COVER (UNDERSIDE)

PLACE 1/2" DIAM. HORIZONTAL BAR IN CENTER OF SIDE OR END OPENING GREATER THAN 6"



SECTION B-B

NOTES:

1. PROVIDE 1/4" x 18" GALVANIZED CHAIN WELD TO COVER AND EYE BOLT.
2. PROVIDE END OR SIDE OPENINGS AS SHOWN ON PLANS OR CROSS SECTION.
3. TOP OF WALLS TO BE FINISHED TO A FLAT PLANE TO PROVIDE EVEN BEARING FOR PLATE COVER.
4. ALL METALS SHALL BE HOT DIP GALVANIZED PER ASTM A123.

DATE: 09/22/2017		NOT TO SCALE	
REVISION	BY	APPROVED	DATE

CITY OF ELK GROVE - PUBLIC WORKS

**DROP INLET
TYPE F**

APPROVED BY:

Paul Mulock

CITY ENGINEER

10/24/2018

DATE



DRAWING NUMBER

SD - 18