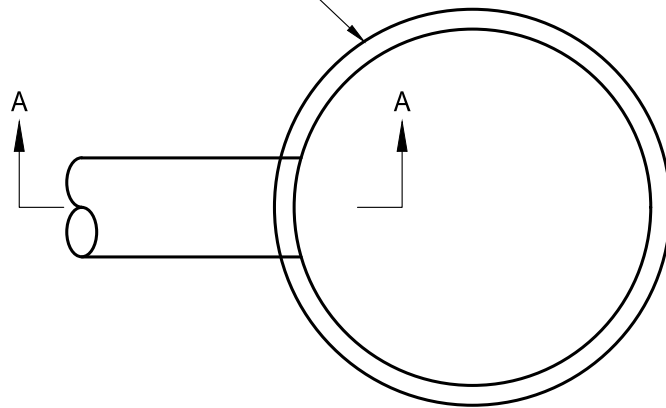
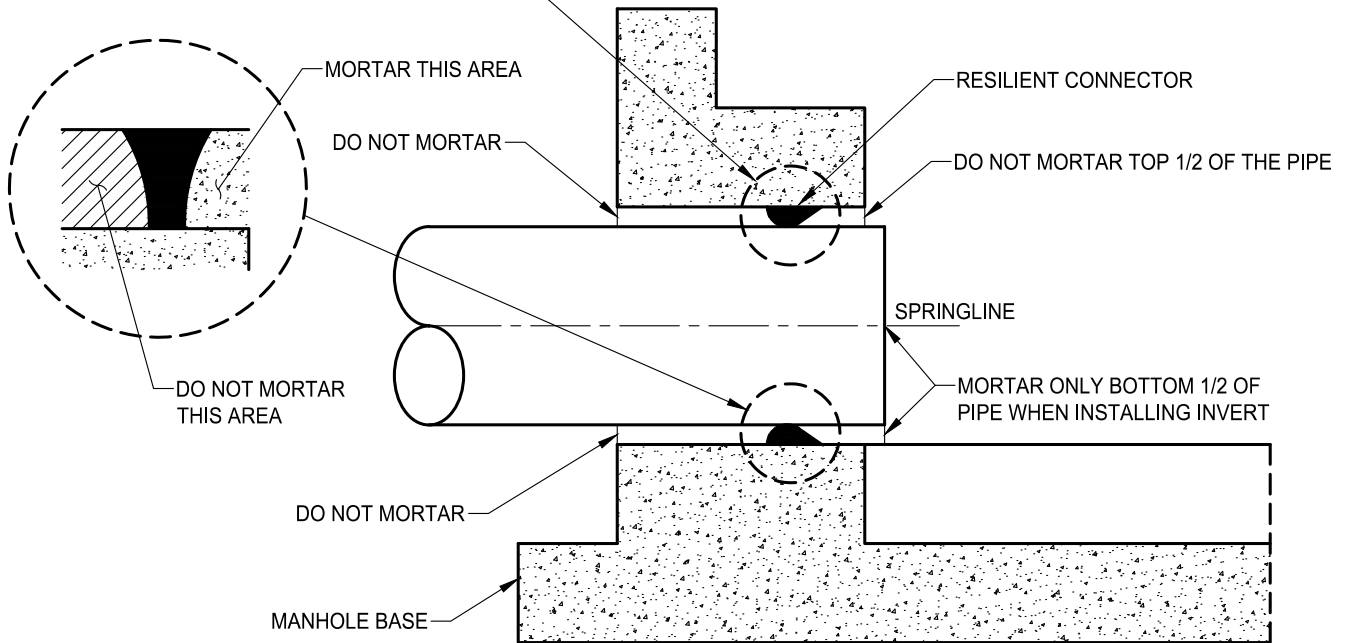
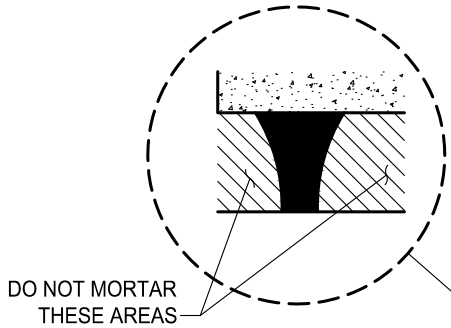


MANHOLE BASE AND BARREL SECTION. MANHOLE CONE, FRAME, AND COVER OMITTED FOR CLARITY.



**PLAN**



**SECTION A-A**

**NOTES:**

1. TO HELP CREATE A FLEXIBLE, WATERTIGHT JOINT, DO NOT PLACE MORTAR AROUND THE CONNECTOR ON THE OUTSIDE OF THE STRUCTURE OR AROUND THE TOP HALF OF THE CONNECTOR ON THE INSIDE WHEN COMPLETING THE INVERT WORK.
2. RESILIENT CONNECTORS SHALL BE A FLEXIBLE COMPRESSION GASKET OR BOOT CONNECTOR PER SECTION 39-2.01 "PRECAST CONCRETE STORM DRAIN MANHOLES" OF THE CITY OF ELK GROVE CONSTRUCTION SPECIFICATIONS.
3. ALL CONNECTORS SHALL MEET OR EXCEED THE REQUIREMENTS OF A.S.T.M. C-923.

DATE: 09/22/2017		NOT TO SCALE	
REVISION	BY	APPROVED	DATE

CITY OF ELK GROVE - PUBLIC WORKS

---

**FLEXIBLE PIPE TO MANHOLE CONNECTION**

APPROVED BY:  
*Robert M. Muddoch*  
CITY ENGINEER

10/24/2018  
DATE

---

DRAWING NUMBER  
**SD - 24**

