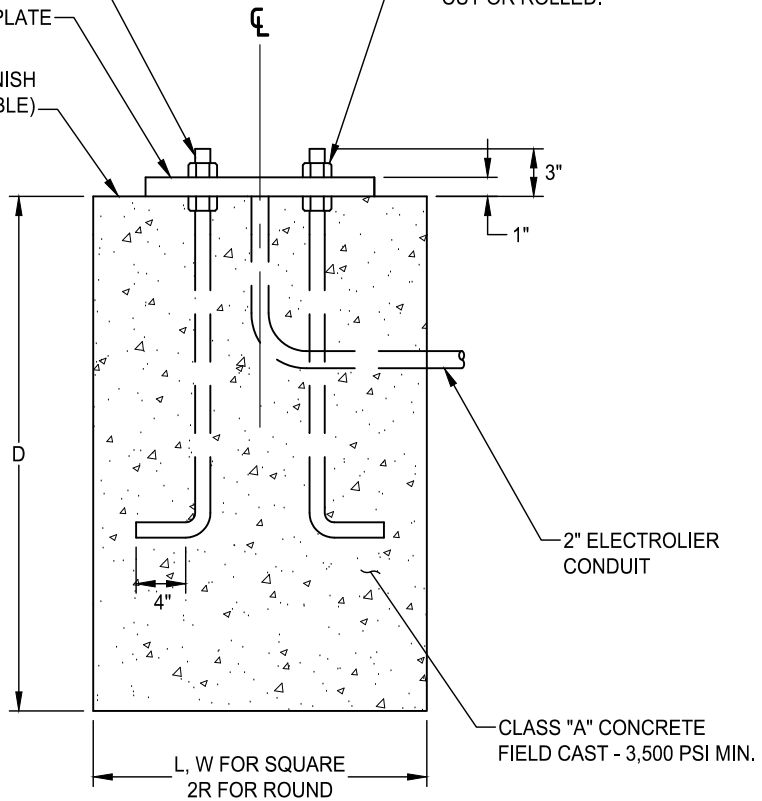


ELECTROLIER MUST BE GROUNDED BACK TO THE SERVICE POINT

BASE PLATE

SIDEWALK FINISH (IF APPLICABLE)

FOUR (4) 1" x 36" ANCHOR BOLTS WITH 4" BEND. 6" OF THREAD WITH TWO NUTS AND TWO WASHERS FOR EACH BOLT. THREAD MAY BE CUT OR ROLLED.



ELEVATION

MINIMUM FOUNDATION DIMENSIONS *						
STREET LIGHT AREAS	STREET LIGHT SUB-TYPE (SERIES)	SQUARE			ROUND	
		L	W	D	R	D
CT	SERIES 'A'	30"	30"	5'	15"	5'
CT, OT, LW	SERIES 'B'	24"	24"	4'	12"	4'
LW, ZONE 2	SERIES 'A'	30"	30"	6'-6"	15"	6'-6"
ZONE 2	SERIES 'B'	24"	24"	4'-6"	12"	4'-6"

CT - COMMON TYPE
 OT - OLD TOWN
 LW - LAGUNA WEST

SEE SL-19 FOR STREET LIGHT AREAS

* IN LIEU OF USING THE STANDARD MINIMUM DIMENSIONS, A LICENSED PROFESSIONAL ENGINEER MAY SUBMIT A SITE-SPECIFIC (BY STREET LIGHT TYPE/LOCATION) FOUNDATION DESIGN FOR APPROVAL.

* STABLE SOILS ONLY. UNSTABLE SOIL MAY REQUIRE A DEEPER FOUNDATION AS DETERMINED BY THE DESIGN ENGINEER.

DATE: 09/22/2007		NOT TO SCALE	
REVISION	BY	APPROVED	DATE

CITY OF ELK GROVE - PUBLIC WORKS

STREET LIGHT FOUNDATIONS

APPROVED BY:

Paul M. Muddoch

CITY ENGINEER

10/24/2018

DATE



DRAWING NUMBER

SL - 3