



THE NCSTM
The National Community SurveyTM

Elk Grove, CA

Technical Appendices

2019



2955 Valmont Road Suite 300
Boulder, Colorado 80301
n-r-c.com • 303-444-7863



Leaders at the Core of Better Communities

777 North Capitol Street NE Suite 500
Washington, DC 20002
icma.org • 800-745-8780

Contents

Appendix A: Complete Survey Responses	1
Appendix B: Benchmark Comparisons	21
Appendix C: Detailed Survey Methods	35
Appendix D: Survey Materials	40



The National Community Survey™
© 2001-2019 National Research Center, Inc.

The NCS™ is presented by NRC in collaboration with ICMA.

NRC is a charter member of the AAPOR Transparency Initiative, providing clear disclosure of our sound and ethical survey research practices.

Appendix A: Complete Survey Responses

Responses excluding “don’t know”

The following pages contain a complete set of responses to each question on the survey, excluding the “don’t know” responses. The percent of respondents giving a particular response is shown followed by the number of respondents (denoted with “N=”).

Table 1: Question 1

Please rate each of the following aspects of quality of life in Elk Grove:	Excellent		Good		Fair		Poor		Total	
	%	N	%	N	%	N	%	N	%	N
Elk Grove as a place to live	35%	N=173	49%	N=240	13%	N=66	2%	N=11	100%	N=490
Your neighborhood as a place to live	39%	N=190	48%	N=237	12%	N=59	1%	N=4	100%	N=490
Elk Grove as a place to raise children	37%	N=166	47%	N=208	14%	N=60	2%	N=11	100%	N=445
Elk Grove as a place to work	21%	N=77	30%	N=108	30%	N=108	19%	N=67	100%	N=360
Elk Grove as a place to visit	15%	N=68	29%	N=135	36%	N=168	20%	N=92	100%	N=464
Elk Grove as a place to retire	26%	N=111	35%	N=155	24%	N=104	15%	N=66	100%	N=437
The overall quality of life in Elk Grove	25%	N=121	55%	N=265	18%	N=86	3%	N=13	100%	N=485

Table 2: Question 2

Please rate each of the following characteristics as they relate to Elk Grove as a whole:	Excellent		Good		Fair		Poor		Total	
	%	N	%	N	%	N	%	N	%	N
Overall feeling of safety in Elk Grove	17%	N=83	58%	N=284	22%	N=109	3%	N=13	100%	N=488
Overall ease of getting to the places you usually have to visit	21%	N=104	42%	N=206	25%	N=122	12%	N=56	100%	N=488
Quality of overall natural environment in Elk Grove	27%	N=131	45%	N=218	21%	N=101	7%	N=32	100%	N=482
Overall "built environment" of Elk Grove (including overall design, buildings, parks and transportation systems)	22%	N=107	44%	N=210	25%	N=119	9%	N=42	100%	N=478
Health and wellness opportunities in Elk Grove	25%	N=116	48%	N=223	23%	N=108	4%	N=17	100%	N=464
Overall opportunities for education and enrichment	23%	N=103	49%	N=220	21%	N=93	6%	N=29	100%	N=445
Overall economic health of Elk Grove	16%	N=70	52%	N=227	27%	N=115	5%	N=21	100%	N=433
Sense of community	15%	N=72	43%	N=204	34%	N=162	8%	N=40	100%	N=477
Overall image or reputation of Elk Grove	20%	N=94	52%	N=252	25%	N=121	3%	N=14	100%	N=481

Table 3: Question 3

Please indicate how likely or unlikely you are to do each of the following:	Very likely		Somewhat likely		Somewhat unlikely		Very unlikely		Total	
	%	N	%	N	%	N	%	N	%	N
Recommend living in Elk Grove to someone who asks	44%	N=215	44%	N=213	6%	N=27	6%	N=30	100%	N=485
Remain in Elk Grove for the next five years	55%	N=266	31%	N=148	6%	N=30	7%	N=36	100%	N=479

Table 4: Question 4

Please rate how safe or unsafe you feel:	Very safe		Somewhat safe		Neither safe nor unsafe		Somewhat unsafe		Very unsafe		Total	
	%	N	%	N	%	N	%	N	%	N	%	N
In your neighborhood during the day	60%	N=293	32%	N=158	4%	N=18	3%	N=16	0%	N=2	100%	N=487
In Elk Grove's downtown/commercial area during the day	42%	N=195	44%	N=203	10%	N=47	3%	N=13	1%	N=3	100%	N=462

The National Community Survey™

Table 5: Question 5

Please rate each of the following characteristics as they relate to Elk Grove as a whole:	Excellent		Good		Fair		Poor		Total	
Traffic flow on major streets	5%	N=24	27%	N=131	40%	N=194	28%	N=134	100%	N=482
Ease of public parking	17%	N=80	48%	N=231	26%	N=123	9%	N=44	100%	N=478
Ease of travel by car in Elk Grove	14%	N=68	45%	N=215	27%	N=127	14%	N=68	100%	N=478
Ease of travel by public transportation in Elk Grove	8%	N=16	29%	N=61	31%	N=65	32%	N=68	100%	N=210
Ease of travel by bicycle in Elk Grove	13%	N=41	41%	N=129	31%	N=98	16%	N=49	100%	N=317
Ease of walking in Elk Grove	23%	N=106	43%	N=201	27%	N=126	7%	N=31	100%	N=464
Availability of paths and walking trails	28%	N=122	42%	N=185	22%	N=98	8%	N=35	100%	N=441
Air quality	18%	N=87	54%	N=259	24%	N=116	5%	N=22	100%	N=484
Cleanliness of Elk Grove	25%	N=120	50%	N=242	24%	N=116	2%	N=10	100%	N=488
Overall appearance of Elk Grove	28%	N=133	51%	N=249	19%	N=91	2%	N=11	100%	N=484
Public places where people want to spend time	16%	N=75	44%	N=205	28%	N=132	11%	N=51	100%	N=463
Variety of housing options	13%	N=58	39%	N=173	35%	N=156	13%	N=57	100%	N=444
Availability of affordable quality housing	7%	N=30	30%	N=119	30%	N=123	33%	N=132	100%	N=403
Fitness opportunities (including exercise classes and paths or trails, etc.)	24%	N=107	45%	N=203	27%	N=121	5%	N=24	100%	N=455
Recreational opportunities	19%	N=81	44%	N=193	31%	N=137	6%	N=27	100%	N=438
Availability of affordable quality food	20%	N=95	46%	N=225	27%	N=129	7%	N=36	100%	N=486
Availability of affordable quality health care	21%	N=93	48%	N=216	25%	N=113	6%	N=27	100%	N=449
Availability of preventive health services	22%	N=95	47%	N=206	25%	N=109	6%	N=28	100%	N=437
Availability of affordable quality mental health care	12%	N=33	40%	N=108	31%	N=85	16%	N=45	100%	N=270

Table 6: Question 6

Please rate each of the following characteristics as they relate to Elk Grove as a whole:	Excellent		Good		Fair		Poor		Total	
Availability of affordable quality child care/preschool	12%	N=32	36%	N=92	28%	N=72	23%	N=59	100%	N=255
K-12 education	26%	N=93	53%	N=186	18%	N=63	2%	N=9	100%	N=350
Adult educational opportunities	12%	N=35	50%	N=146	31%	N=90	8%	N=23	100%	N=294
Opportunities to attend cultural/arts/music activities	14%	N=56	40%	N=168	33%	N=138	13%	N=53	100%	N=415
Opportunities to participate in religious or spiritual events and activities	20%	N=67	51%	N=171	27%	N=91	2%	N=7	100%	N=337
Employment opportunities	7%	N=25	27%	N=94	41%	N=140	24%	N=84	100%	N=343
Shopping opportunities	14%	N=66	38%	N=181	35%	N=168	14%	N=65	100%	N=480
Cost of living in Elk Grove	6%	N=31	31%	N=151	41%	N=198	21%	N=100	100%	N=479
Overall quality of business and service establishments in Elk Grove	10%	N=47	48%	N=224	33%	N=156	9%	N=43	100%	N=470
Vibrant downtown/commercial area	5%	N=21	27%	N=120	36%	N=157	32%	N=141	100%	N=438
Overall quality of new development in Elk Grove	11%	N=49	39%	N=171	36%	N=160	14%	N=61	100%	N=440
Opportunities to participate in social events and activities	10%	N=43	41%	N=176	41%	N=179	8%	N=35	100%	N=433
Opportunities to volunteer	15%	N=50	44%	N=150	36%	N=120	5%	N=18	100%	N=338
Opportunities to participate in community matters	14%	N=47	42%	N=145	39%	N=134	6%	N=21	100%	N=347
Openness and acceptance of the community toward people of diverse backgrounds	19%	N=82	46%	N=205	30%	N=134	5%	N=22	100%	N=444
Neighborliness of residents in Elk Grove	13%	N=63	45%	N=215	36%	N=169	6%	N=28	100%	N=474

The National Community Survey™

Table 7: Question 7

Please indicate whether or not you have done each of the following in the last 12 months.	No		Yes		Total	
Made efforts to conserve water	9%	N=43	91%	N=437	100%	N=479
Made efforts to make your home more energy efficient	23%	N=112	77%	N=367	100%	N=479
Observed a code violation or other hazard in Elk Grove (weeds, abandoned buildings, etc.)	51%	N=238	49%	N=232	100%	N=470
Household member was a victim of a crime in Elk Grove	89%	N=424	11%	N=52	100%	N=476
Reported a crime to the police in Elk Grove	75%	N=359	25%	N=117	100%	N=476
Stocked supplies in preparation for an emergency	56%	N=269	44%	N=210	100%	N=479
Campaigned or advocated for an issue, cause or candidate	85%	N=404	15%	N=73	100%	N=477
Contacted the City of Elk Grove (in-person, phone, email or web) for help or information	63%	N=303	37%	N=174	100%	N=477
Contacted Elk Grove elected officials (in-person, phone, email or web) to express your opinion	85%	N=409	15%	N=70	100%	N=478

Table 8: Question 8

In the last 12 months, about how many times, if at all, have you or other household members done each of the following in Elk Grove?	2 times a week or more		2-4 times a month		Once a month or less		Not at all		Total	
Visited a neighborhood park or City park	33%	N=159	28%	N=137	30%	N=144	9%	N=45	100%	N=485
Used Elk Grove public libraries or their services	7%	N=35	16%	N=76	31%	N=148	47%	N=225	100%	N=484
Participated in religious or spiritual activities in Elk Grove	11%	N=55	16%	N=76	16%	N=75	57%	N=273	100%	N=479
Attended a City-sponsored event	2%	N=10	7%	N=34	44%	N=210	47%	N=226	100%	N=481
Used bus, rail, subway or other public transportation instead of driving	7%	N=33	2%	N=10	7%	N=33	84%	N=406	100%	N=483
Carpooled with other adults or children instead of driving alone	25%	N=119	13%	N=63	21%	N=100	42%	N=201	100%	N=483
Walked or biked instead of driving	18%	N=89	16%	N=76	24%	N=116	42%	N=201	100%	N=482
Volunteered your time to some group/activity in Elk Grove	7%	N=34	10%	N=50	20%	N=97	63%	N=303	100%	N=483
Participated in a club	8%	N=40	5%	N=23	12%	N=59	75%	N=361	100%	N=483
Talked to or visited with your immediate neighbors	33%	N=161	34%	N=163	25%	N=120	8%	N=40	100%	N=483
Done a favor for a neighbor	17%	N=83	20%	N=95	42%	N=205	21%	N=102	100%	N=484

Table 9: Question 9

Thinking about local public meetings (of local elected officials like City Council or County Commissioners, advisory boards, town halls, HOA, neighborhood watch, etc.), in the last 12 months, about how many times, if at all, have you or other household members attended or watched a local public meeting?	2 times a week or more		2-4 times a month		Once a month or less		Not at all		Total	
Attended a local public meeting	1%	N=3	1%	N=4	15%	N=70	84%	N=407	100%	N=484
Watched (online or on television) a local public meeting	2%	N=11	3%	N=16	17%	N=83	77%	N=371	100%	N=481

Table 10: Question 10

Please rate the quality of each of the following services in Elk Grove:	Excellent		Good		Fair		Poor		Total	
Police/Sheriff services	33%	N=145	49%	N=215	15%	N=68	3%	N=12	100%	N=440
Crime prevention	22%	N=88	46%	N=186	25%	N=102	7%	N=27	100%	N=403
Traffic enforcement	18%	N=77	41%	N=181	28%	N=124	13%	N=55	100%	N=437
Street repair	16%	N=72	37%	N=171	29%	N=131	18%	N=83	100%	N=457
Street cleaning	22%	N=101	45%	N=208	23%	N=106	11%	N=50	100%	N=464
Street lighting	21%	N=97	50%	N=236	22%	N=102	7%	N=34	100%	N=469
Sidewalk maintenance	19%	N=85	47%	N=212	28%	N=126	6%	N=29	100%	N=453

The National Community Survey™

Please rate the quality of each of the following services in Elk Grove:	Excellent		Good		Fair		Poor		Total	
Traffic signal timing	12%	N=53	38%	N=177	28%	N=130	22%	N=100	100%	N=460
Bus or transit services	15%	N=28	37%	N=69	32%	N=60	16%	N=30	100%	N=187
Garbage collection	38%	N=174	49%	N=228	13%	N=58	1%	N=4	100%	N=464
Recycling	34%	N=161	48%	N=225	14%	N=67	4%	N=19	100%	N=471
Yard waste pick-up	37%	N=169	47%	N=216	14%	N=64	1%	N=7	100%	N=455
Storm drainage	24%	N=102	49%	N=210	21%	N=90	6%	N=23	100%	N=426
Drinking water	19%	N=83	43%	N=186	27%	N=119	11%	N=47	100%	N=435
Sewer services	26%	N=113	51%	N=219	19%	N=83	3%	N=13	100%	N=428
Power (electric and/or gas) utility	28%	N=130	50%	N=236	20%	N=96	2%	N=8	100%	N=469
Utility billing	19%	N=90	45%	N=212	29%	N=135	8%	N=36	100%	N=473
City parks	35%	N=161	48%	N=218	14%	N=63	3%	N=14	100%	N=456
Recreation programs or classes	23%	N=75	50%	N=162	23%	N=75	3%	N=11	100%	N=323
Recreation centers or facilities	24%	N=80	53%	N=182	19%	N=66	4%	N=14	100%	N=342
Land use, planning and zoning	9%	N=30	34%	N=117	33%	N=113	25%	N=87	100%	N=347
Code enforcement (weeds, abandoned buildings, etc.)	13%	N=46	31%	N=111	40%	N=146	16%	N=58	100%	N=361
Animal control	20%	N=65	43%	N=142	29%	N=96	8%	N=27	100%	N=330
Economic development	13%	N=48	36%	N=133	37%	N=136	14%	N=51	100%	N=368
Health services	22%	N=93	50%	N=213	25%	N=106	4%	N=17	100%	N=429
Public library services	27%	N=94	54%	N=186	17%	N=57	2%	N=6	100%	N=343
Public information services	15%	N=48	50%	N=161	30%	N=97	5%	N=15	100%	N=321
Cable television	11%	N=39	39%	N=137	30%	N=104	20%	N=69	100%	N=349
Emergency preparedness (services that prepare the community for natural disasters or other emergency situations)	12%	N=30	41%	N=104	36%	N=91	12%	N=30	100%	N=255
Preservation of natural areas such as open space, farmlands and greenbelts	15%	N=59	38%	N=153	29%	N=116	18%	N=71	100%	N=399
Elk Grove open space	14%	N=56	37%	N=150	31%	N=126	18%	N=73	100%	N=405
City-sponsored special events	17%	N=57	48%	N=167	31%	N=106	5%	N=16	100%	N=347
Overall customer service by Elk Grove employees (police, receptionists, planners, etc.)	24%	N=95	48%	N=193	25%	N=98	3%	N=12	100%	N=398

Table 11: Question 11

Overall, how would you rate the quality of the services provided by each of the following?	Excellent		Good		Fair		Poor		Total	
The City of Elk Grove	22%	N=98	50%	N=226	24%	N=106	4%	N=18	100%	N=448
The Federal Government	8%	N=29	29%	N=111	47%	N=177	17%	N=63	100%	N=381

Table 12: Question 12

Please rate the following categories of Elk Grove government performance:	Excellent		Good		Fair		Poor		Total	
The value of services for the taxes paid to Elk Grove	11%	N=48	34%	N=147	36%	N=156	18%	N=78	100%	N=429
The overall direction that Elk Grove is taking	12%	N=52	39%	N=172	31%	N=139	18%	N=78	100%	N=442
The job Elk Grove government does at welcoming resident involvement	15%	N=52	38%	N=133	31%	N=108	16%	N=55	100%	N=348
Overall confidence in Elk Grove government	10%	N=40	36%	N=152	35%	N=149	20%	N=83	100%	N=424
Generally acting in the best interest of the community	12%	N=48	40%	N=165	26%	N=110	22%	N=92	100%	N=414
Being honest	13%	N=46	39%	N=139	29%	N=104	19%	N=69	100%	N=358
Treating all residents fairly	15%	N=57	35%	N=130	34%	N=126	15%	N=56	100%	N=368

The National Community Survey™

Table 13: Question 13

Please rate how important, if at all, you think it is for the Elk Grove community to focus on each of the following in the coming two years:	Essential		Very important		Somewhat important		Not at all important		Total	
Overall feeling of safety in Elk Grove	64%	N=306	31%	N=151	4%	N=21	1%	N=2	100%	N=481
Overall ease of getting to the places you usually have to visit	40%	N=190	47%	N=225	13%	N=61	1%	N=4	100%	N=480
Quality of overall natural environment in Elk Grove	37%	N=176	44%	N=209	19%	N=91	1%	N=4	100%	N=481
Overall "built environment" of Elk Grove (including overall design, buildings, parks and transportation systems)	31%	N=146	49%	N=233	20%	N=94	1%	N=5	100%	N=479
Health and wellness opportunities in Elk Grove	31%	N=147	45%	N=216	22%	N=107	2%	N=8	100%	N=478
Overall opportunities for education and enrichment	36%	N=174	39%	N=188	22%	N=104	3%	N=12	100%	N=478
Overall economic health of Elk Grove	46%	N=220	44%	N=213	9%	N=44	1%	N=3	100%	N=479
Sense of community	35%	N=169	41%	N=195	22%	N=105	2%	N=9	100%	N=479

Table 14: Question 14

On average, about how often did you use City of Elk Grove trails or bikeways in the past 12 months?	Percent	Number
Daily or almost daily	14%	N=69
1 or 2 times a week	16%	N=79
A few times a month	23%	N=110
Once a month or less	19%	N=93
Not at all	27%	N=133
Total	100%	N=485

Table 15: Question 15

If you use the trails or bikeways - what activities do you usually engage in? (Mark all that apply.)	Percent	Number
Walking	83%	N=317
Walking pet	33%	N=126
Jogging/running	26%	N=100
Other	3%	N=12
Biking	48%	N=186
Skateboarding/rollerblading	1%	N=5

Total may exceed 100% as respondents could select more than one option.

Table 16: Question 16

On average, about how often did you ride a bicycle in the past 12 months?	Percent	Number
Daily or almost daily	6%	N=29
1 or 2 times a week	8%	N=40
A few times a month	15%	N=73
Once a month or less	21%	N=102
Not at all	49%	N=238
Total	100%	N=482

The National Community Survey™

Table 17: Question 17

Would you like to ride a bicycle more often?	Percent	Number
Yes	67%	N=305
No	21%	N=94
Not applicable/I am physically unable to ride a bicycle	12%	N=54
Total	100%	N=452

Table 18: Question 18

Which of the following do you consider to be reasons that you do not bike more frequently? (Mark all that apply.)	Percent	Number
Not enough bike lanes on streets	19%	N=88
Not enough paved, off-street bike/multi-use trails	26%	N=120
Not enough opportunities to combine bicycling and public transportation (i.e., bus, light rail, etc.)	10%	N=45
Lack of enforcement of vehicle speed limits	14%	N=64
Don't have showers and/or lockers at work	5%	N=26
Physical limitations/I am unable to bike	11%	N=50
None – I do not want to bicycle	20%	N=93
Bike lanes are not physically separated from car traffic	19%	N=89
Improvements needed to bike path/trail connectivity	22%	N=104
Not enough on-road bike signage	10%	N=46
Not enough education, incentive, and/or enforcement programs	13%	N=60
Not enough bicycle parking/storage	13%	N=60
I'm content, no changes needed	20%	N=95
Other	15%	N=71

Total may exceed 100% as respondents could select more than one option.

Table 19: Question 19

Please indicate your level of agreement with each of the following statements:	Strongly agree		Somewhat agree		Somewhat disagree		Strongly disagree		Total	
Bicycling is a convenient way to get from one place to another	31%	N=128	50%	N=205	14%	N=56	5%	N=22	100%	N=412
I worry about being hit by a motor vehicle when riding a bicycle in my area	49%	N=186	34%	N=127	11%	N=41	7%	N=26	100%	N=380
I worry about my personal safety when riding a bicycle in my area (e.g. being mugged, etc.)	20%	N=73	26%	N=96	32%	N=119	23%	N=85	100%	N=374
I am familiar with the bicycle lanes, paths, and trails in my area	29%	N=112	49%	N=190	16%	N=62	6%	N=22	100%	N=386
I am satisfied with the number and condition of the bike lanes, paths, and trails in my area	14%	N=50	45%	N=163	26%	N=92	15%	N=56	100%	N=360
It is easy to combine bicycling and public transit in my area	12%	N=25	34%	N=69	22%	N=45	32%	N=64	100%	N=203
I would be more likely to ride a bicycle if motor vehicles and bicycles were physically separated by a barrier	34%	N=121	35%	N=121	15%	N=52	16%	N=57	100%	N=351
I feel more safe riding a bicycle in Elk Grove now than I did five years ago	13%	N=29	42%	N=98	23%	N=53	23%	N=53	100%	N=233

The National Community Survey™

Table 20: Question 20

Which of the following do you consider to be reasons that you do not walk more frequently? (Mark all that apply.)	Percent	Number
Missing sidewalk sections/poor sidewalk conditions	18%	N=79
Unsafe intersections	22%	N=97
Speeding cars/unsafe driving	36%	N=158
Personal safety	30%	N=134
Visually unappealing surroundings	8%	N=38
Too few crossings	6%	N=26
Destinations are too far away	55%	N=244
Bad weather	15%	N=65
Too much to carry	20%	N=88
I don't like to walk	4%	N=17
Physical limitations/I am unable to walk	7%	N=32
Other	12%	N=51

Total may exceed 100% as respondents could select more than one option.

Table 21: Question D1

How often, if at all, do you do each of the following, considering all of the times you could?	Never		Rarely		Sometimes		Usually		Always		Total	
Recycle at home	2%	N=11	1%	N=4	5%	N=22	21%	N=102	71%	N=346	100%	N=484
Purchase goods or services from a business located in Elk Grove	1%	N=5	2%	N=10	13%	N=64	50%	N=242	34%	N=163	100%	N=484
Eat at least 5 portions of fruits and vegetables a day	3%	N=12	13%	N=61	33%	N=158	26%	N=122	26%	N=124	100%	N=477
Participate in moderate or vigorous physical activity	2%	N=10	9%	N=41	32%	N=153	33%	N=157	25%	N=119	100%	N=480
Read or watch local news (via television, paper, computer, etc.)	7%	N=35	10%	N=47	20%	N=97	25%	N=123	38%	N=182	100%	N=484
Vote in local elections	6%	N=29	5%	N=26	10%	N=47	14%	N=67	65%	N=312	100%	N=481

Table 22: Question D2

Would you say that in general your health is:	Percent	Number
Excellent	17%	N=83
Very good	44%	N=213
Good	30%	N=144
Fair	8%	N=37
Poor	1%	N=4
Total	100%	N=480

Table 23: Question D3

What impact, if any, do you think the economy will have on your family income in the next 6 months? Do you think the impact will be:	Percent	Number
Very positive	9%	N=41
Somewhat positive	24%	N=115
Neutral	50%	N=242
Somewhat negative	16%	N=77
Very negative	1%	N=5
Total	100%	N=480

The National Community Survey™

Table 24: Question D4

What is your employment status?	Percent	Number
Working full time for pay	62%	N=300
Working part time for pay	12%	N=57
Unemployed, looking for paid work	1%	N=5
Unemployed, not looking for paid work	1%	N=7
Fully retired	23%	N=112
Total	100%	N=481

Table 25: Question D5

Do you work inside the boundaries of Elk Grove?	Percent	Number
Yes, outside the home	20%	N=93
Yes, from home	11%	N=50
No	69%	N=314
Total	100%	N=457

Table 26: Question D6

How many years have you lived in Elk Grove?	Percent	Number
Less than 2 years	13%	N=64
2 to 5 years	17%	N=84
6 to 10 years	17%	N=83
11 to 20 years	23%	N=114
More than 20 years	29%	N=140
Total	100%	N=485

Table 27: Question D7

Which best describes the building you live in?	Percent	Number
One family house detached from any other houses	88%	N=425
Building with two or more homes (duplex, townhome, apartment or condominium)	11%	N=54
Mobile home	0%	N=0
Other	1%	N=6
Total	100%	N=485

Table 28: Question D8

Is this house, apartment or mobile home...	Percent	Number
Rented	25%	N=122
Owned	75%	N=365
Total	100%	N=487

The National Community Survey™

Table 29: Question D9

About how much is your monthly housing cost for the place you live (including rent, mortgage payment, property tax, property insurance and homeowners' association (HOA) fees)?	Percent	Number
Less than \$300 per month	1%	N=7
\$300 to \$599 per month	7%	N=34
\$600 to \$999 per month	7%	N=33
\$1,000 to \$1,499 per month	13%	N=59
\$1,500 to \$2,499 per month	48%	N=222
\$2,500 or more per month	24%	N=111
Total	100%	N=466

Table 30: Question D10

Do any children 17 or under live in your household?	Percent	Number
No	60%	N=289
Yes	40%	N=191
Total	100%	N=480

Table 31: Question D11

Are you or any other members of your household aged 65 or older?	Percent	Number
No	68%	N=325
Yes	32%	N=155
Total	100%	N=480

Table 32: Question D12

How much do you anticipate your household's total income before taxes will be for the current year? (Please include in your total income money from all sources for all persons living in your household.)	Percent	Number
Less than \$25,000	8%	N=36
\$25,000 to \$49,999	14%	N=62
\$50,000 to \$99,999	27%	N=124
\$100,000 to \$149,999	25%	N=115
\$150,000 or more	26%	N=120
Total	100%	N=458

Table 33: Question D13

Are you Spanish, Hispanic or Latino?	Percent	Number
No, not Spanish, Hispanic or Latino	85%	N=401
Yes, I consider myself to be Spanish, Hispanic or Latino	15%	N=69
Total	100%	N=470

The National Community Survey™

Table 34: Question D14

What is your race? (Mark one or more races to indicate what race(s) you consider yourself to be.)	Percent	Number
American Indian or Alaskan Native	4%	N=17
Asian, Asian Indian or Pacific Islander	31%	N=145
Black or African American	9%	N=41
White	56%	N=265
Other	11%	N=53

Total may exceed 100% as respondents could select more than one option.

Table 35: Question D15

In which category is your age?	Percent	Number
18 to 24 years	3%	N=14
25 to 34 years	24%	N=118
35 to 44 years	16%	N=77
45 to 54 years	24%	N=115
55 to 64 years	11%	N=56
65 to 74 years	14%	N=68
75 years or older	8%	N=39
Total	100%	N=486

Table 36: Question D16

What is your sex?	Percent	Number
Female	53%	N=255
Male	47%	N=230
Total	100%	N=485

Table 37: Question D17

Do you consider a cell phone or landline your primary telephone number?	Percent	Number
Cell	76%	N=366
Land line	9%	N=45
Both	15%	N=70
Total	100%	N=481

Responses including “don’t know”

The following pages contain a complete set of responses to each question on the survey, including the “don’t know” responses. The percent of respondents giving a particular response is shown followed by the number of respondents (denoted with “N=”).

Table 38: Question 1

Please rate each of the following aspects of quality of life in Elk Grove:	Excellent		Good		Fair		Poor		Don't know		Total	
Elk Grove as a place to live	35%	N=173	49%	N=240	13%	N=66	2%	N=11	0%	N=0	100%	N=490
Your neighborhood as a place to live	39%	N=190	48%	N=237	12%	N=59	1%	N=4	0%	N=0	100%	N=490
Elk Grove as a place to raise children	34%	N=166	43%	N=208	12%	N=60	2%	N=11	8%	N=40	100%	N=485
Elk Grove as a place to work	16%	N=77	22%	N=108	22%	N=108	14%	N=67	25%	N=121	100%	N=481
Elk Grove as a place to visit	14%	N=68	28%	N=135	35%	N=168	19%	N=92	4%	N=19	100%	N=483
Elk Grove as a place to retire	23%	N=111	32%	N=155	22%	N=104	14%	N=66	9%	N=43	100%	N=480
The overall quality of life in Elk Grove	25%	N=121	54%	N=265	18%	N=86	3%	N=13	0%	N=2	100%	N=487

Table 39: Question 2

Please rate each of the following characteristics as they relate to Elk Grove as a whole:	Excellent		Good		Fair		Poor		Don't know		Total	
Overall feeling of safety in Elk Grove	17%	N=83	58%	N=284	22%	N=109	3%	N=13	0%	N=0	100%	N=488
Overall ease of getting to the places you usually have to visit	21%	N=104	42%	N=206	25%	N=122	12%	N=56	0%	N=2	100%	N=490
Quality of overall natural environment in Elk Grove	27%	N=131	45%	N=218	21%	N=101	7%	N=32	1%	N=3	100%	N=485
Overall "built environment" of Elk Grove (including overall design, buildings, parks and transportation systems)	22%	N=107	43%	N=210	24%	N=119	9%	N=42	2%	N=11	100%	N=489
Health and wellness opportunities in Elk Grove	24%	N=116	46%	N=223	22%	N=108	4%	N=17	4%	N=22	100%	N=485
Overall opportunities for education and enrichment	21%	N=103	45%	N=220	19%	N=93	6%	N=29	8%	N=40	100%	N=484
Overall economic health of Elk Grove	14%	N=70	47%	N=227	24%	N=115	4%	N=21	11%	N=53	100%	N=486
Sense of community	15%	N=72	42%	N=204	33%	N=162	8%	N=40	2%	N=8	100%	N=485
Overall image or reputation of Elk Grove	19%	N=94	52%	N=252	25%	N=121	3%	N=14	1%	N=4	100%	N=485

Table 40: Question 3

Please indicate how likely or unlikely you are to do each of the following:	Very likely		Somewhat likely		Somewhat unlikely		Very unlikely		Don't know		Total	
Recommend living in Elk Grove to someone who asks	44%	N=215	43%	N=213	6%	N=27	6%	N=30	1%	N=5	100%	N=490
Remain in Elk Grove for the next five years	55%	N=266	30%	N=148	6%	N=30	7%	N=36	1%	N=6	100%	N=486

Table 41: Question 4

Please rate how safe or unsafe you feel:	Very safe		Somewhat safe		Neither safe nor unsafe		Somewhat unsafe		Very unsafe		Don't know		Total	
In your neighborhood during the day	60%	N=293	32%	N=158	4%	N=18	3%	N=16	0%	N=2	0%	N=1	100%	N=488
In Elk Grove's downtown/commercial area during the day	40%	N=195	42%	N=203	10%	N=47	3%	N=13	1%	N=3	4%	N=21	100%	N=483

The National Community Survey™

Table 42: Question 5

Please rate each of the following characteristics as they relate to Elk Grove as a whole:	Excellent		Good		Fair		Poor		Don't know		Total	
	%	N	%	N	%	N	%	N	%	N	%	N
Traffic flow on major streets	5%	N=24	27%	N=131	40%	N=194	27%	N=134	2%	N=8	100%	N=490
Ease of public parking	16%	N=80	47%	N=231	25%	N=123	9%	N=44	2%	N=9	100%	N=487
Ease of travel by car in Elk Grove	14%	N=68	44%	N=215	26%	N=127	14%	N=68	2%	N=9	100%	N=487
Ease of travel by public transportation in Elk Grove	3%	N=16	13%	N=61	13%	N=65	14%	N=68	57%	N=275	100%	N=485
Ease of travel by bicycle in Elk Grove	9%	N=41	27%	N=129	20%	N=98	10%	N=49	34%	N=166	100%	N=483
Ease of walking in Elk Grove	22%	N=106	41%	N=201	26%	N=126	6%	N=31	5%	N=24	100%	N=488
Availability of paths and walking trails	25%	N=122	38%	N=185	20%	N=98	7%	N=35	9%	N=42	100%	N=484
Air quality	18%	N=87	53%	N=259	24%	N=116	5%	N=22	1%	N=4	100%	N=488
Cleanliness of Elk Grove	25%	N=120	50%	N=242	24%	N=116	2%	N=10	0%	N=1	100%	N=489
Overall appearance of Elk Grove	27%	N=133	51%	N=249	19%	N=91	2%	N=11	0%	N=2	100%	N=485
Public places where people want to spend time	16%	N=75	42%	N=205	27%	N=132	10%	N=51	4%	N=20	100%	N=483
Variety of housing options	12%	N=58	36%	N=173	32%	N=156	12%	N=57	8%	N=38	100%	N=482
Availability of affordable quality housing	6%	N=30	25%	N=119	25%	N=123	27%	N=132	17%	N=81	100%	N=484
Fitness opportunities (including exercise classes and paths or trails, etc.)	22%	N=107	42%	N=203	25%	N=121	5%	N=24	6%	N=30	100%	N=485
Recreational opportunities	17%	N=81	40%	N=193	28%	N=137	6%	N=27	10%	N=47	100%	N=485
Availability of affordable quality food	20%	N=95	46%	N=225	26%	N=129	7%	N=36	0%	N=2	100%	N=489
Availability of affordable quality health care	19%	N=93	44%	N=216	23%	N=113	6%	N=27	8%	N=40	100%	N=489
Availability of preventive health services	19%	N=95	42%	N=206	22%	N=109	6%	N=28	10%	N=50	100%	N=487
Availability of affordable quality mental health care	7%	N=33	22%	N=108	18%	N=85	9%	N=45	44%	N=213	100%	N=483

Table 43: Question 6

Please rate each of the following characteristics as they relate to Elk Grove as a whole:	Excellent		Good		Fair		Poor		Don't know		Total	
	%	N	%	N	%	N	%	N	%	N	%	N
Availability of affordable quality child care/preschool	7%	N=32	19%	N=92	15%	N=72	12%	N=59	47%	N=230	100%	N=485
K-12 education	19%	N=93	39%	N=186	13%	N=63	2%	N=9	27%	N=131	100%	N=481
Adult educational opportunities	7%	N=35	31%	N=146	19%	N=90	5%	N=23	39%	N=185	100%	N=479
Opportunities to attend cultural/arts/music activities	12%	N=56	35%	N=168	29%	N=138	11%	N=53	13%	N=65	100%	N=480
Opportunities to participate in religious or spiritual events and activities	14%	N=67	36%	N=171	19%	N=91	1%	N=7	30%	N=144	100%	N=481
Employment opportunities	5%	N=25	19%	N=94	29%	N=140	17%	N=84	29%	N=139	100%	N=482
Shopping opportunities	14%	N=66	37%	N=181	35%	N=168	13%	N=65	1%	N=6	100%	N=486
Cost of living in Elk Grove	6%	N=31	31%	N=151	41%	N=198	21%	N=100	1%	N=3	100%	N=482
Overall quality of business and service establishments in Elk Grove	10%	N=47	47%	N=224	33%	N=156	9%	N=43	2%	N=9	100%	N=479
Vibrant downtown/commercial area	4%	N=21	25%	N=120	33%	N=157	29%	N=141	9%	N=41	100%	N=480
Overall quality of new development in Elk Grove	10%	N=49	36%	N=171	33%	N=160	13%	N=61	8%	N=37	100%	N=477
Opportunities to participate in social events and activities	9%	N=43	37%	N=176	37%	N=179	7%	N=35	10%	N=50	100%	N=483
Opportunities to volunteer	10%	N=50	31%	N=150	25%	N=120	4%	N=18	30%	N=142	100%	N=480
Opportunities to participate in community matters	10%	N=47	31%	N=145	29%	N=134	4%	N=21	26%	N=122	100%	N=470
Openness and acceptance of the community toward people of diverse backgrounds	17%	N=82	43%	N=205	28%	N=134	5%	N=22	8%	N=38	100%	N=482
Neighborliness of residents in Elk Grove	13%	N=63	45%	N=215	35%	N=169	6%	N=28	2%	N=8	100%	N=483

The National Community Survey™

Table 44: Question 7

Please indicate whether or not you have done each of the following in the last 12 months.	No		Yes		Total	
	%	N	%	N	%	N
Made efforts to conserve water	9%	N=43	91%	N=437	100%	N=479
Made efforts to make your home more energy efficient	23%	N=112	77%	N=367	100%	N=479
Observed a code violation or other hazard in Elk Grove (weeds, abandoned buildings, etc.)	51%	N=238	49%	N=232	100%	N=470
Household member was a victim of a crime in Elk Grove	89%	N=424	11%	N=52	100%	N=476
Reported a crime to the police in Elk Grove	75%	N=359	25%	N=117	100%	N=476
Stocked supplies in preparation for an emergency	56%	N=269	44%	N=210	100%	N=479
Campaigned or advocated for an issue, cause or candidate	85%	N=404	15%	N=73	100%	N=477
Contacted the City of Elk Grove (in-person, phone, email or web) for help or information	63%	N=303	37%	N=174	100%	N=477
Contacted Elk Grove elected officials (in-person, phone, email or web) to express your opinion	85%	N=409	15%	N=70	100%	N=478

Table 45: Question 8

In the last 12 months, about how many times, if at all, have you or other household members done each of the following in Elk Grove?	2 times a week or more		2-4 times a month		Once a month or less		Not at all		Total	
	%	N	%	N	%	N	%	N	%	N
Visited a neighborhood park or City park	33%	N=159	28%	N=137	30%	N=144	9%	N=45	100%	N=485
Used Elk Grove public libraries or their services	7%	N=35	16%	N=76	31%	N=148	47%	N=225	100%	N=484
Participated in religious or spiritual activities in Elk Grove	11%	N=55	16%	N=76	16%	N=75	57%	N=273	100%	N=479
Attended a City-sponsored event	2%	N=10	7%	N=34	44%	N=210	47%	N=226	100%	N=481
Used bus, rail, subway or other public transportation instead of driving	7%	N=33	2%	N=10	7%	N=33	84%	N=406	100%	N=483
Carpooled with other adults or children instead of driving alone	25%	N=119	13%	N=63	21%	N=100	42%	N=201	100%	N=483
Walked or biked instead of driving	18%	N=89	16%	N=76	24%	N=116	42%	N=201	100%	N=482
Volunteered your time to some group/activity in Elk Grove	7%	N=34	10%	N=50	20%	N=97	63%	N=303	100%	N=483
Participated in a club	8%	N=40	5%	N=23	12%	N=59	75%	N=361	100%	N=483
Talked to or visited with your immediate neighbors	33%	N=161	34%	N=163	25%	N=120	8%	N=40	100%	N=483
Done a favor for a neighbor	17%	N=83	20%	N=95	42%	N=205	21%	N=102	100%	N=484

Table 46: Question 9

Thinking about local public meetings (of local elected officials like City Council or County Commissioners, advisory boards, town halls, HOA, neighborhood watch, etc.), in the last 12 months, about how many times, if at all, have you or other household members attended or watched a local public meeting?	2 times a week or more		2-4 times a month		Once a month or less		Not at all		Total	
	%	N	%	N	%	N	%	N	%	N
Attended a local public meeting	1%	N=3	1%	N=4	15%	N=70	84%	N=407	100%	N=484
Watched (online or on television) a local public meeting	2%	N=11	3%	N=16	17%	N=83	77%	N=371	100%	N=481

Table 47: Question 10

Please rate the quality of each of the following services in Elk Grove:	Excellent		Good		Fair		Poor		Don't know		Total	
	%	N	%	N	%	N	%	N	%	N	%	N
Police/Sheriff services	30%	N=145	45%	N=215	14%	N=68	3%	N=12	7%	N=35	100%	N=475
Crime prevention	19%	N=88	39%	N=186	22%	N=102	6%	N=27	15%	N=70	100%	N=474
Traffic enforcement	16%	N=77	38%	N=181	26%	N=124	12%	N=55	8%	N=37	100%	N=475
Street repair	15%	N=72	36%	N=171	28%	N=131	18%	N=83	3%	N=16	100%	N=472
Street cleaning	21%	N=101	44%	N=208	22%	N=106	11%	N=50	2%	N=11	100%	N=475
Street lighting	20%	N=97	50%	N=236	22%	N=102	7%	N=34	1%	N=5	100%	N=475

The National Community Survey™

Please rate the quality of each of the following services in Elk Grove:	Excellent		Good		Fair		Poor		Don't know		Total	
Sidewalk maintenance	18%	N=85	45%	N=212	27%	N=126	6%	N=29	5%	N=21	100%	N=474
Traffic signal timing	11%	N=53	38%	N=177	28%	N=130	21%	N=100	2%	N=11	100%	N=471
Bus or transit services	6%	N=28	15%	N=69	13%	N=60	6%	N=30	60%	N=284	100%	N=471
Garbage collection	37%	N=174	48%	N=228	12%	N=58	1%	N=4	2%	N=10	100%	N=474
Recycling	34%	N=161	47%	N=225	14%	N=67	4%	N=19	1%	N=6	100%	N=477
Yard waste pick-up	36%	N=169	45%	N=216	13%	N=64	1%	N=7	4%	N=20	100%	N=475
Storm drainage	22%	N=102	44%	N=210	19%	N=90	5%	N=23	10%	N=50	100%	N=476
Drinking water	18%	N=83	39%	N=186	25%	N=119	10%	N=47	8%	N=36	100%	N=471
Sewer services	24%	N=113	46%	N=219	17%	N=83	3%	N=13	10%	N=48	100%	N=476
Power (electric and/or gas) utility	28%	N=130	50%	N=236	20%	N=96	2%	N=8	0%	N=2	100%	N=471
Utility billing	19%	N=90	45%	N=212	28%	N=135	7%	N=36	1%	N=3	100%	N=476
City parks	34%	N=161	46%	N=218	13%	N=63	3%	N=14	4%	N=19	100%	N=476
Recreation programs or classes	16%	N=75	34%	N=162	16%	N=75	2%	N=11	32%	N=152	100%	N=475
Recreation centers or facilities	17%	N=80	39%	N=182	14%	N=66	3%	N=14	27%	N=129	100%	N=472
Land use, planning and zoning	6%	N=30	25%	N=117	24%	N=113	18%	N=87	27%	N=126	100%	N=473
Code enforcement (weeds, abandoned buildings, etc.)	10%	N=46	23%	N=111	31%	N=146	12%	N=58	24%	N=115	100%	N=476
Animal control	14%	N=65	30%	N=142	20%	N=96	6%	N=27	31%	N=145	100%	N=474
Economic development	10%	N=48	28%	N=133	29%	N=136	11%	N=51	22%	N=102	100%	N=471
Health services	20%	N=93	45%	N=213	22%	N=106	4%	N=17	10%	N=47	100%	N=476
Public library services	20%	N=94	39%	N=186	12%	N=57	1%	N=6	28%	N=132	100%	N=475
Public information services	10%	N=48	34%	N=161	20%	N=97	3%	N=15	32%	N=151	100%	N=472
Cable television	8%	N=39	29%	N=137	22%	N=104	14%	N=69	27%	N=126	100%	N=475
Emergency preparedness (services that prepare the community for natural disasters or other emergency situations)	6%	N=30	22%	N=104	19%	N=91	6%	N=30	46%	N=218	100%	N=474
Preservation of natural areas such as open space, farmlands and greenbelts	13%	N=59	33%	N=153	25%	N=116	15%	N=71	15%	N=69	100%	N=468
Elk Grove open space	12%	N=56	32%	N=150	27%	N=126	15%	N=73	15%	N=69	100%	N=474
City-sponsored special events	12%	N=57	36%	N=167	23%	N=106	4%	N=16	25%	N=118	100%	N=464
Overall customer service by Elk Grove employees (police, receptionists, planners, etc.)	20%	N=95	42%	N=193	21%	N=98	3%	N=12	14%	N=65	100%	N=463

Table 48: Question 11

Overall, how would you rate the quality of the services provided by each of the following?	Excellent		Good		Fair		Poor		Don't know		Total	
The City of Elk Grove	21%	N=98	48%	N=226	22%	N=106	4%	N=18	6%	N=27	100%	N=475
The Federal Government	6%	N=29	24%	N=111	38%	N=177	14%	N=63	19%	N=88	100%	N=469

Table 49: Question 12

Please rate the following categories of Elk Grove government performance:	Excellent		Good		Fair		Poor		Don't know		Total	
The value of services for the taxes paid to Elk Grove	10%	N=48	31%	N=147	33%	N=156	17%	N=78	10%	N=45	100%	N=474
The overall direction that Elk Grove is taking	11%	N=52	36%	N=172	29%	N=139	16%	N=78	7%	N=35	100%	N=477
The job Elk Grove government does at welcoming resident involvement	11%	N=52	28%	N=133	23%	N=108	12%	N=55	26%	N=125	100%	N=474
Overall confidence in Elk Grove government	8%	N=40	32%	N=152	31%	N=149	17%	N=83	11%	N=53	100%	N=477
Generally acting in the best interest of the community	10%	N=48	35%	N=165	23%	N=110	19%	N=92	13%	N=60	100%	N=475

The National Community Survey™

Please rate the following categories of Elk Grove government performance:	Excellent		Good		Fair		Poor		Don't know		Total	
	10%	N=46	30%	N=139	22%	N=104	15%	N=69	24%	N=112	100%	N=470
Being honest	10%	N=46	30%	N=139	22%	N=104	15%	N=69	24%	N=112	100%	N=470
Treating all residents fairly	12%	N=57	27%	N=130	26%	N=126	12%	N=56	22%	N=107	100%	N=475

Table 50: Question 13

Please rate how important, if at all, you think it is for the Elk Grove community to focus on each of the following in the coming two years:	Essential		Very important		Somewhat important		Not at all important		Total	
	64%	N=306	31%	N=151	4%	N=21	1%	N=2	100%	N=481
Overall feeling of safety in Elk Grove	64%	N=306	31%	N=151	4%	N=21	1%	N=2	100%	N=481
Overall ease of getting to the places you usually have to visit	40%	N=190	47%	N=225	13%	N=61	1%	N=4	100%	N=480
Quality of overall natural environment in Elk Grove	37%	N=176	44%	N=209	19%	N=91	1%	N=4	100%	N=481
Overall "built environment" of Elk Grove (including overall design, buildings, parks and transportation systems)	31%	N=146	49%	N=233	20%	N=94	1%	N=5	100%	N=479
Health and wellness opportunities in Elk Grove	31%	N=147	45%	N=216	22%	N=107	2%	N=8	100%	N=478
Overall opportunities for education and enrichment	36%	N=174	39%	N=188	22%	N=104	3%	N=12	100%	N=478
Overall economic health of Elk Grove	46%	N=220	44%	N=213	9%	N=44	1%	N=3	100%	N=479
Sense of community	35%	N=169	41%	N=195	22%	N=105	2%	N=9	100%	N=479

Table 51: Question 14

On average, about how often did you use City of Elk Grove trails or bikeways in the past 12 months?	Percent	Number
Daily or almost daily	14%	N=69
1 or 2 times a week	16%	N=79
A few times a month	23%	N=110
Once a month or less	19%	N=93
Not at all	27%	N=133
Total	100%	N=485

Table 52: Question 15

If you use the trails or bikeways - what activities do you usually engage in? (Mark all that apply.)	Percent	Number
Walking	83%	N=317
Walking pet	33%	N=126
Jogging/running	26%	N=100
Other	3%	N=12
Biking	48%	N=186
Skateboarding/rollerblading	1%	N=5

Total may exceed 100% as respondents could select more than one option.

Table 53: Question 16

On average, about how often did you ride a bicycle in the past 12 months?	Percent	Number
Daily or almost daily	6%	N=29
1 or 2 times a week	8%	N=40
A few times a month	15%	N=73
Once a month or less	21%	N=102
Not at all	49%	N=238
Total	100%	N=482

The National Community Survey™

Table 54: Question 17

Would you like to ride a bicycle more often?	Percent	Number
Yes	67%	N=305
No	21%	N=94
Not applicable/I am physically unable to ride a bicycle	12%	N=54
Total	100%	N=452

Table 55: Question 18

Which of the following do you consider to be reasons that you do not bike more frequently? (Mark all that apply.)	Percent	Number
Not enough bike lanes on streets	19%	N=88
Not enough paved, off-street bike/multi-use trails	26%	N=120
Not enough opportunities to combine bicycling and public transportation (i.e., bus, light rail, etc.)	10%	N=45
Lack of enforcement of vehicle speed limits	14%	N=64
Don't have showers and/or lockers at work	5%	N=26
Physical limitations/I am unable to bike	11%	N=50
None – I do not want to bicycle	20%	N=93
Bike lanes are not physically separated from car traffic	19%	N=89
Improvements needed to bike path/trail connectivity	22%	N=104
Not enough on-road bike signage	10%	N=46
Not enough education, incentive, and/or enforcement programs	13%	N=60
Not enough bicycle parking/storage	13%	N=60
I'm content, no changes needed	20%	N=95
Other	15%	N=71

Total may exceed 100% as respondents could select more than one option.

Table 56: Question 19

Please indicate your level of agreement with each of the following statements:	Strongly agree		Somewhat agree		Somewhat disagree		Strongly disagree		Don't know/not applicable		Total	
	Percent	N	Percent	N	Percent	N	Percent	N	Percent	N	Percent	N
Bicycling is a convenient way to get from one place to another	27%	N=128	44%	N=205	12%	N=56	5%	N=22	12%	N=56	100%	N=468
I worry about being hit by a motor vehicle when riding a bicycle in my area	40%	N=186	27%	N=127	9%	N=41	5%	N=26	19%	N=87	100%	N=467
I worry about my personal safety when riding a bicycle in my area (e.g. being mugged, etc.)	16%	N=73	21%	N=96	26%	N=119	19%	N=85	18%	N=81	100%	N=455
I am familiar with the bicycle lanes, paths, and trails in my area	24%	N=112	41%	N=190	13%	N=62	5%	N=22	17%	N=77	100%	N=464
I am satisfied with the number and condition of the bike lanes, paths, and trails in my area	11%	N=50	35%	N=163	20%	N=92	12%	N=56	22%	N=102	100%	N=463
It is easy to combine bicycling and public transit in my area	6%	N=25	15%	N=69	10%	N=45	14%	N=64	55%	N=253	100%	N=456
I would be more likely to ride a bicycle if motor vehicles and bicycles were physically separated by a barrier	26%	N=121	26%	N=121	11%	N=52	12%	N=57	24%	N=112	100%	N=462
I feel more safe riding a bicycle in Elk Grove now than I did five years ago	6%	N=29	21%	N=98	11%	N=53	11%	N=53	50%	N=231	100%	N=463

The National Community Survey™

Table 57: Question 20

Which of the following do you consider to be reasons that you do not walk more frequently? (Mark all that apply.)	Percent	Number
Missing sidewalk sections/poor sidewalk conditions	18%	N=79
Unsafe intersections	22%	N=97
Speeding cars/unsafe driving	36%	N=158
Personal safety	30%	N=134
Visually unappealing surroundings	8%	N=38
Too few crossings	6%	N=26
Destinations are too far away	55%	N=244
Bad weather	15%	N=65
Too much to carry	20%	N=88
I don't like to walk	4%	N=17
Physical limitations/I am unable to walk	7%	N=32
Other	12%	N=51

Total may exceed 100% as respondents could select more than one option.

Table 58: Question D1

How often, if at all, do you do each of the following, considering all of the times you could?	Never		Rarely		Sometimes		Usually		Always		Total	
Recycle at home	2%	N=11	1%	N=4	5%	N=22	21%	N=102	71%	N=346	100%	N=484
Purchase goods or services from a business located in Elk Grove	1%	N=5	2%	N=10	13%	N=64	50%	N=242	34%	N=163	100%	N=484
Eat at least 5 portions of fruits and vegetables a day	3%	N=12	13%	N=61	33%	N=158	26%	N=122	26%	N=124	100%	N=477
Participate in moderate or vigorous physical activity	2%	N=10	9%	N=41	32%	N=153	33%	N=157	25%	N=119	100%	N=480
Read or watch local news (via television, paper, computer, etc.)	7%	N=35	10%	N=47	20%	N=97	25%	N=123	38%	N=182	100%	N=484
Vote in local elections	6%	N=29	5%	N=26	10%	N=47	14%	N=67	65%	N=312	100%	N=481

Table 59: Question D2

Would you say that in general your health is:	Percent	Number
Excellent	17%	N=83
Very good	44%	N=213
Good	30%	N=144
Fair	8%	N=37
Poor	1%	N=4
Total	100%	N=480

Table 60: Question D3

What impact, if any, do you think the economy will have on your family income in the next 6 months? Do you think the impact will be:	Percent	Number
Very positive	9%	N=41
Somewhat positive	24%	N=115
Neutral	50%	N=242
Somewhat negative	16%	N=77
Very negative	1%	N=5
Total	100%	N=480

The National Community Survey™

Table 61: Question D4

What is your employment status?	Percent	Number
Working full time for pay	62%	N=300
Working part time for pay	12%	N=57
Unemployed, looking for paid work	1%	N=5
Unemployed, not looking for paid work	1%	N=7
Fully retired	23%	N=112
Total	100%	N=481

Table 62: Question D5

Do you work inside the boundaries of Elk Grove?	Percent	Number
Yes, outside the home	20%	N=93
Yes, from home	11%	N=50
No	69%	N=314
Total	100%	N=457

Table 63: Question D6

How many years have you lived in Elk Grove?	Percent	Number
Less than 2 years	13%	N=64
2 to 5 years	17%	N=84
6 to 10 years	17%	N=83
11 to 20 years	23%	N=114
More than 20 years	29%	N=140
Total	100%	N=485

Table 64: Question D7

Which best describes the building you live in?	Percent	Number
One family house detached from any other houses	88%	N=425
Building with two or more homes (duplex, townhome, apartment or condominium)	11%	N=54
Mobile home	0%	N=0
Other	1%	N=6
Total	100%	N=485

Table 65: Question D8

Is this house, apartment or mobile home...	Percent	Number
Rented	25%	N=122
Owned	75%	N=365
Total	100%	N=487

The National Community Survey™

Table 66: Question D9

About how much is your monthly housing cost for the place you live (including rent, mortgage payment, property tax, property insurance and homeowners' association (HOA) fees)?	Percent	Number
Less than \$300 per month	1%	N=7
\$300 to \$599 per month	7%	N=34
\$600 to \$999 per month	7%	N=33
\$1,000 to \$1,499 per month	13%	N=59
\$1,500 to \$2,499 per month	48%	N=222
\$2,500 or more per month	24%	N=111
Total	100%	N=466

Table 67: Question D10

Do any children 17 or under live in your household?	Percent	Number
No	60%	N=289
Yes	40%	N=191
Total	100%	N=480

Table 68: Question D11

Are you or any other members of your household aged 65 or older?	Percent	Number
No	68%	N=325
Yes	32%	N=155
Total	100%	N=480

Table 69: Question D12

How much do you anticipate your household's total income before taxes will be for the current year? (Please include in your total income money from all sources for all persons living in your household.)	Percent	Number
Less than \$25,000	8%	N=36
\$25,000 to \$49,999	14%	N=62
\$50,000 to \$99,999	27%	N=124
\$100,000 to \$149,999	25%	N=115
\$150,000 or more	26%	N=120
Total	100%	N=458

Table 70: Question D13

Are you Spanish, Hispanic or Latino?	Percent	Number
No, not Spanish, Hispanic or Latino	85%	N=401
Yes, I consider myself to be Spanish, Hispanic or Latino	15%	N=69
Total	100%	N=470

The National Community Survey™

Table 71: Question D14

What is your race? (Mark one or more races to indicate what race(s) you consider yourself to be.)	Percent	Number
American Indian or Alaskan Native	4%	N=17
Asian, Asian Indian or Pacific Islander	31%	N=145
Black or African American	9%	N=41
White	56%	N=265
Other	11%	N=53

Total may exceed 100% as respondents could select more than one option.

Table 72: Question D15

In which category is your age?	Percent	Number
18 to 24 years	3%	N=14
25 to 34 years	24%	N=118
35 to 44 years	16%	N=77
45 to 54 years	24%	N=115
55 to 64 years	11%	N=56
65 to 74 years	14%	N=68
75 years or older	8%	N=39
Total	100%	N=486

Table 73: Question D16

What is your sex?	Percent	Number
Female	53%	N=255
Male	47%	N=230
Total	100%	N=485

Table 74: Question D17

Do you consider a cell phone or landline your primary telephone number?	Percent	Number
Cell	76%	N=366
Land line	9%	N=45
Both	15%	N=70
Total	100%	N=481

Appendix B: Benchmark Comparisons

Comparison Data

NRC’s database of comparative resident opinion is comprised of resident perspectives gathered in surveys from over 600 communities whose residents evaluated the same kinds of topics on The National Community Survey. The comparison evaluations are from the most recent survey completed in each community; most communities conduct surveys every year or in alternating years. NRC adds the latest results quickly upon survey completion, keeping the benchmark data fresh and relevant. The communities in the database represent a wide geographic and population range. The City of Elk Grove chose to have comparisons made to the entire database and a subset of similar jurisdictions from the database (California jurisdictions with populations 60,000 or greater).

Interpreting the Results

Ratings are compared when there are at least five communities in which a similar question was asked. Where comparisons are available, four columns are provided in the table. The first column is Elk Grove’s “percent positive.” The percent positive is the combination of the top two most positive response options (i.e., “excellent” and “good,” “very safe” and “somewhat safe,” etc.), or, in the case of resident behaviors/participation, the percent positive represents the proportion of respondents indicating “yes” or participating in an activity at least once a month. The second column is the rank assigned to Elk Grove’s rating among communities where a similar question was asked. The third column is the number of communities that asked a similar question. The final column shows the comparison of Elk Grove’s rating to the benchmark.

In that final column, Elk Grove’s results are noted as being “higher” than the benchmark, “lower” than the benchmark or “similar” to the benchmark, meaning that the average rating given by Elk Grove residents is statistically similar to or different (greater or lesser) than the benchmark. Being rated as “higher” or “lower” than the benchmark means that Elk Grove’s average rating for a particular item was more than 10 points different than the benchmark. If a rating was “much higher” or “much lower,” then Elk Grove’s average rating was more than 20 points different when compared to the benchmark.

Benchmark Database Characteristics	
Region	Percent
New England	3%
Middle Atlantic	5%
East North Central	15%
West North Central	13%
South Atlantic	22%
East South Central	3%
West South Central	7%
Mountain	16%
Pacific	16%
Population	Percent
Less than 10,000	10%
10,000 to 24,999	22%
25,000 to 49,999	23%
50,000 to 99,999	22%
100,000 or more	23%

The National Community Survey™

National Benchmark Comparisons

Table 75: Community Characteristics General

	Percent positive	Rank	Number of communities in comparison	Comparison to benchmark
The overall quality of life in Elk Grove	80%	239	433	Similar
Overall image or reputation of Elk Grove	72%	188	341	Similar
Elk Grove as a place to live	84%	217	378	Similar
Your neighborhood as a place to live	87%	135	309	Similar
Elk Grove as a place to raise children	84%	174	369	Similar
Elk Grove as a place to retire	61%	209	349	Similar
Overall appearance of Elk Grove	79%	134	340	Similar

Table 76: Community Characteristics by Facet

		Percent positive	Rank	Number of communities in comparison	Comparison to benchmark	
Safety	Overall feeling of safety in Elk Grove	75%	246	350	Similar	
	In your neighborhood during the day	93%	240	347	Similar	
	In Elk Grove's downtown/commercial area during the day	86%	224	315	Similar	
Mobility	Overall ease of getting to the places you usually have to visit	63%	219	274	Similar	
	Availability of paths and walking trails	70%	118	310	Similar	
	Ease of walking in Elk Grove	66%	134	304	Similar	
	Ease of travel by bicycle in Elk Grove	54%	154	303	Similar	
	Ease of travel by public transportation in Elk Grove	37%	127	236	Similar	
	Ease of travel by car in Elk Grove	59%	213	302	Similar	
	Ease of public parking	65%	73	232	Similar	
Natural Environment	Traffic flow on major streets	32%	257	330	Similar	
	Quality of overall natural environment in Elk Grove	72%	183	276	Similar	
	Cleanliness of Elk Grove	74%	147	283	Similar	
Built Environment	Air quality	71%	177	245	Similar	
	Overall "built environment" of Elk Grove (including overall design, buildings, parks and transportation systems)	66%	88	265	Similar	
	Overall quality of new development in Elk Grove	50%	189	290	Similar	
	Availability of affordable quality housing	37%	180	299	Similar	
	Variety of housing options	52%	134	278	Similar	
	Public places where people want to spend time	61%	167	259	Similar	
Economy	Overall economic health of Elk Grove	69%	126	271	Similar	
	Vibrant downtown/commercial area	32%	197	248	Lower	
	Overall quality of business and service establishments in Elk Grove	58%	187	273	Similar	
	Cost of living in Elk Grove	38%	173	267	Similar	
	Shopping opportunities	51%	170	291	Similar	
	Employment opportunities	35%	198	308	Similar	
	Elk Grove as a place to visit	44%	236	286	Lower	
	Elk Grove as a place to work	51%	239	353	Similar	
	Recreation and Wellness	Health and wellness opportunities in Elk Grove	73%	116	266	Similar
		Availability of affordable quality mental health care	52%	83	235	Similar
Availability of preventive health services		69%	99	239	Similar	
Availability of affordable quality health care		69%	94	258	Similar	
Availability of affordable quality food		66%	137	245	Similar	
	Recreational opportunities	63%	173	291	Similar	

The National Community Survey™

		Percent positive	Rank	Number of communities in comparison	Comparison to benchmark
	Fitness opportunities (including exercise classes and paths or trails, etc.)	68%	134	257	Similar
	Overall opportunities for education and enrichment	73%	126	268	Similar
Education and Enrichment	Opportunities to participate in religious or spiritual events and activities	71%	167	206	Similar
	Opportunities to attend cultural/arts/music activities	54%	185	288	Similar
	Adult educational opportunities	62%	117	245	Similar
	K-12 education	80%	122	269	Similar
	Availability of affordable quality child care/preschool	49%	167	258	Similar
		Opportunities to participate in social events and activities	51%	198	264
Community Engagement	Neighborhoodness of Elk Grove	58%	157	260	Similar
	Openness and acceptance of the community toward people of diverse backgrounds	65%	90	291	Similar
	Opportunities to participate in community matters	55%	190	274	Similar
	Opportunities to volunteer	59%	208	265	Similar

Table 77: Governance General

	Percent positive	Rank	Number of communities in comparison	Comparison to benchmark
Services provided by the City of Elk Grove	72%	207	403	Similar
Overall customer service by Elk Grove employees (police, receptionists, planners, etc.)	72%	208	369	Similar
Value of services for the taxes paid to Elk Grove	45%	257	387	Similar
Overall direction that Elk Grove is taking	51%	220	312	Similar
Job Elk Grove government does at welcoming resident involvement	53%	152	315	Similar
Overall confidence in Elk Grove government	45%	197	272	Similar
Generally acting in the best interest of the community	51%	192	272	Similar
Being honest	52%	184	263	Similar
Treating all residents fairly	51%	161	269	Similar
Services provided by the Federal Government	37%	121	252	Similar

Table 78: Governance by Facet

		Percent positive	Rank	Number of communities in comparison	Comparison to benchmark
Safety	Police/Sheriff services	82%	210	428	Similar
	Crime prevention	68%	191	351	Similar
	Animal control	63%	143	319	Similar
	Emergency preparedness (services that prepare the community for natural disasters or other emergency situations)	53%	219	277	Similar
Mobility	Traffic enforcement	59%	222	355	Similar
	Street repair	53%	131	360	Similar
	Street cleaning	66%	132	315	Similar
	Street lighting	71%	71	317	Similar
	Sidewalk maintenance	66%	62	308	Similar
	Traffic signal timing	50%	158	262	Similar
	Bus or transit services	52%	108	230	Similar
Natural Environment	Garbage collection	87%	103	334	Similar
	Recycling	82%	127	342	Similar
	Yard waste pick-up	85%	59	266	Similar

The National Community Survey™

		Percent positive	Rank	Number of communities in comparison	Comparison to benchmark
	Drinking water	62%	208	299	Similar
	Preservation of natural areas such as open space, farmlands and greenbelts	53%	184	254	Similar
	Elk Grove open space	51%	187	241	Similar
	Storm drainage	73%	79	333	Similar
	Sewer services	78%	147	305	Similar
	Power (electric and/or gas) utility	78%	83	187	Similar
	Utility billing	64%	151	234	Similar
	Land use, planning and zoning	42%	205	296	Similar
	Code enforcement (weeds, abandoned buildings, etc.)	43%	195	374	Similar
Built Environment	Cable television	51%	113	201	Similar
Economy	Economic development	49%	156	282	Similar
	City parks	83%	135	312	Similar
	Recreation programs or classes	73%	128	313	Similar
Recreation and Wellness	Recreation centers or facilities	77%	100	276	Similar
	Health services	71%	86	222	Similar
Education and Enrichment	City-sponsored special events	65%	159	283	Similar
	Public library services	82%	238	322	Similar
Community Engagement	Public information services	65%	167	285	Similar

Table 79: Participation General

	Percent positive	Rank	Number of communities in comparison	Comparison to benchmark
Sense of community	58%	191	303	Similar
Recommend living in Elk Grove to someone who asks	88%	139	283	Similar
Remain in Elk Grove for the next five years	86%	108	277	Similar
Contacted Elk Grove (in-person, phone, email or web) for help or information	37%	262	320	Similar

Table 80: Participation by Facet

		Percent positive	Rank	Number of communities in comparison	Comparison to benchmark
	Stocked supplies in preparation for an emergency	44%	69	236	Similar
	Did NOT report a crime to the police	75%	194	263	Similar
Safety	Household member was NOT a victim of a crime	89%	153	272	Similar
	Used bus, rail, subway or other public transportation instead of driving	16%	116	216	Similar
	Carpooled with other adults or children instead of driving alone	58%	14	251	Higher
Mobility	Walked or biked instead of driving	58%	118	260	Similar
	Made efforts to conserve water	91%	28	245	Higher
	Made efforts to make your home more energy efficient	77%	101	247	Similar
Natural Environment	Recycle at home	97%	46	259	Similar
	Did NOT observe a code violation or other hazard in Elk Grove	51%	151	254	Similar
Built Environment	NOT experiencing housing costs stress	55%	238	258	Lower
Economy	Purchase goods or services from a business located in Elk Grove	97%	126	257	Similar

The National Community Survey™

		Percent positive	Rank	Number of communities in comparison	Comparison to benchmark
	Economy will have positive impact on income	32%	128	259	Similar
	Work inside boundaries of Elk Grove	31%	164	258	Lower
Recreation and Wellness	Visited a neighborhood park or City park	91%	40	268	Similar
	Eat at least 5 portions of fruits and vegetables a day	85%	93	248	Similar
	Participate in moderate or vigorous physical activity	89%	44	253	Similar
	In very good to excellent health	62%	151	253	Similar
	Used Elk Grove public libraries or their services	53%	206	248	Similar
Education and Enrichment	Participated in religious or spiritual activities in Elk Grove	43%	110	205	Similar
	Attended City-sponsored event	53%	146	262	Similar
	Community Engagement	Campaigned or advocated for an issue, cause or candidate	15%	216	241
Contacted Elk Grove elected officials (in-person, phone, email or web) to express your opinion		15%	173	255	Similar
Volunteered your time to some group/activity in Elk Grove		37%	130	265	Similar
Participated in a club		25%	119	245	Similar
Talked to or visited with your immediate neighbors		92%	111	255	Similar
Done a favor for a neighbor		79%	171	250	Similar
Attended a local public meeting		16%	214	264	Similar
Watched (online or on television) a local public meeting		23%	104	234	Similar
Read or watch local news (via television, paper, computer, etc.)		83%	151	258	Similar
Vote in local elections		89%	60	260	Similar

Communities included in national comparisons

The communities included in Elk Grove's comparisons are listed on the following pages along with their population according to the American Community Survey (ACS) 2017 5-year estimates.

Adams County, CO	487,850	Austin city, TX	916,906
Airway Heights city, WA	8,017	Avon town, CO	6,503
Albany city, OR	52,007	Avon town, IN	16,479
Albemarle County, VA	105,105	Avondale city, AZ	81,590
Albert Lea city, MN	17,716	Azusa city, CA	49,029
Alexandria city, VA	154,710	Bainbridge Island city, WA	23,689
American Canyon city, CA	20,341	Baltimore city, MD	619,796
Ames city, IA	65,005	Baltimore County, MD	828,637
Ankeny city, IA	56,237	Battle Creek city, MI	51,505
Ann Arbor city, MI	119,303	Bay Village city, OH	15,426
Apache Junction city, AZ	38,452	Baytown city, TX	76,205
Arapahoe County, CO	626,612	Bedford city, TX	49,082
Arlington city, TX	388,225	Bedford town, MA	14,105
Arvada city, CO	115,320	Bellevue city, WA	139,014
Asheville city, NC	89,318	Bellingham city, WA	85,388
Ashland city, OR	20,733	Bend city, OR	87,167
Ashland town, MA	17,478	Bethlehem township, PA	23,800
Ashland town, VA	7,554	Bettendorf city, IA	35,293
Aspen city, CO	7,097	Billings city, MT	109,082
Athens-Clarke County, GA	122,292	Bloomington city, IN	83,636
Auburn city, AL	61,462	Bloomington city, MN	85,417
Augusta CCD, GA	136,103	Boise City city, ID	220,859
Aurora city, CO	357,323	Bonner Springs city, KS	7,644

The National Community Survey™

Boulder city, CO.....	106,271	Dallas city, TX.....	1,300,122
Bowling Green city, KY.....	64,302	Danville city, KY.....	16,657
Bozeman city, MT.....	43,132	Darien city, IL.....	22,206
Brentwood city, TN.....	41,524	Davenport city, FL.....	3,665
Brighton city, CO.....	38,016	Davidson town, NC.....	12,325
Brookline CDP, MA.....	59,246	Dayton city, OH.....	140,939
Brooklyn Center city, MN.....	30,885	Dayton town, WY.....	815
Brooklyn city, OH.....	10,891	Dearborn city, MI.....	95,295
Broomfield city, CO.....	64,283	Decatur city, GA.....	22,022
Brownsburg town, IN.....	24,625	Del Mar city, CA.....	4,338
Buffalo Grove village, IL.....	41,551	DeLand city, FL.....	30,315
Burlingame city, CA.....	30,401	Delaware city, OH.....	38,193
Cabarrus County, NC.....	196,716	Denison city, TX.....	23,342
Cambridge city, MA.....	110,893	Denton city, TX.....	131,097
Canandaigua city, NY.....	10,402	Denver city, CO.....	678,467
Cannon Beach city, OR.....	1,517	Des Moines city, IA.....	214,778
Cañon City city, CO.....	16,298	Des Peres city, MO.....	8,536
Canton city, SD.....	3,352	Destin city, FL.....	13,421
Cape Coral city, FL.....	173,679	Dover city, NH.....	30,901
Carlsbad city, CA.....	113,147	Dublin city, CA.....	57,022
Carroll city, IA.....	9,937	Dublin city, OH.....	44,442
Cartersville city, GA.....	20,235	Duluth city, MN.....	86,066
Cary town, NC.....	159,715	Durham city, NC.....	257,232
Castle Rock town, CO.....	57,274	Durham County, NC.....	300,865
Cedar Hill city, TX.....	48,149	Dyer town, IN.....	16,077
Cedar Park city, TX.....	70,010	Eagan city, MN.....	66,102
Cedar Rapids city, IA.....	130,330	Eagle Mountain city, UT.....	27,773
Celina city, TX.....	7,910	Eau Claire city, WI.....	67,945
Centennial city, CO.....	108,448	Eden Prairie city, MN.....	63,660
Chandler city, AZ.....	245,160	Eden town, VT.....	1,254
Chandler city, TX.....	2,896	Edgewater city, CO.....	5,299
Chanhassen city, MN.....	25,108	Edina city, MN.....	50,603
Chapel Hill town, NC.....	59,234	Edmond city, OK.....	89,769
Chardon city, OH.....	5,166	Edmonds city, WA.....	41,309
Charles County, MD.....	156,021	El Cerrito city, CA.....	24,982
Charlotte County, FL.....	173,236	El Paso de Robles (Paso Robles) city, CA.....	31,409
Charlottesville city, VA.....	46,487	Elk Grove city, CA.....	166,228
Chattanooga city, TN.....	176,291	Elmhurst city, IL.....	46,139
Chautauqua town, NY.....	4,362	Englewood city, CO.....	33,155
Chesterfield County, VA.....	335,594	Erie town, CO.....	22,019
Clackamas County, OR.....	399,962	Estes Park town, CO.....	6,248
Clayton city, MO.....	16,214	Euclid city, OH.....	47,698
Clearwater city, FL.....	112,794	Fairview town, TX.....	8,473
Cleveland Heights city, OH.....	45,024	Farmers Branch city, TX.....	33,808
Clinton city, SC.....	8,538	Farmersville city, TX.....	3,440
Clive city, IA.....	17,134	Farmington Hills city, MI.....	81,235
Clovis city, CA.....	104,411	Farmington town, CT.....	25,596
College Park city, MD.....	32,186	Fate city, TX.....	10,339
College Station city, TX.....	107,445	Fayetteville city, GA.....	17,069
Colleyville city, TX.....	25,557	Fayetteville city, NC.....	210,324
Collinsville city, IL.....	24,767	Ferguson township, PA.....	18,837
Columbia city, MO.....	118,620	Fernandina Beach city, FL.....	11,957
Columbia city, SC.....	132,236	Flower Mound town, TX.....	71,575
Columbia Falls city, MT.....	5,054	Forest Grove city, OR.....	23,554
Commerce City city, CO.....	52,905	Fort Collins city, CO.....	159,150
Concord city, CA.....	128,160	Franklin city, TN.....	72,990
Concord town, MA.....	19,357	Frederick town, CO.....	11,397
Conshohocken borough, PA.....	7,985	Fremont city, CA.....	230,964
Coolidge city, AZ.....	12,221	Fruita city, CO.....	13,039
Coon Rapids city, MN.....	62,342	Gahanna city, OH.....	34,691
Coral Springs city, FL.....	130,110	Gaithersburg city, MD.....	67,417
Coronado city, CA.....	24,053	Galveston city, TX.....	49,706
Corvallis city, OR.....	56,224	Gardner city, KS.....	21,059
Cottonwood Heights city, UT.....	34,214	Germantown city, TN.....	39,230
Coventry Lake CDP, CT.....	2,932	Gilbert town, AZ.....	232,176
Creve Coeur city, MO.....	18,259	Gillette city, WY.....	31,783
Cupertino city, CA.....	60,687	Glen Ellyn village, IL.....	27,983
Dacono city, CO.....	4,929	Glendora city, CA.....	51,891
Dakota County, MN.....	414,655	Glenview village, IL.....	47,066
Dallas city, OR.....	15,413	Golden city, CO.....	20,365

The National Community Survey™

Golden Valley city, MN.....	21,208	Lakewood city, WA.....	59,102
Goodyear city, AZ.....	74,953	Lancaster County, SC.....	86,544
Grafton village, WI.....	11,576	Lansing city, MI.....	115,222
Grand Blanc city, MI.....	7,964	Laramie city, WY.....	32,104
Grand Rapids city, MI.....	195,355	Larimer County, CO.....	330,976
Grants Pass city, OR.....	36,687	Las Cruces city, NM.....	101,014
Grass Valley city, CA.....	12,893	Las Vegas city, NM.....	13,445
Greeley city, CO.....	100,760	Lawrence city, KS.....	93,954
Greenville city, NC.....	90,347	Lawrenceville city, GA.....	29,287
Greenwich town, CT.....	62,782	Lehi city, UT.....	58,351
Greenwood Village city, CO.....	15,397	Lenexa city, KS.....	52,030
Greer city, SC.....	28,587	Lewisville city, TX.....	103,638
Gunnison County, CO.....	16,215	Lewisville town, NC.....	13,516
Haltom City city, TX.....	44,059	Libertyville village, IL.....	20,504
Hamilton city, OH.....	62,216	Lincolnwood village, IL.....	12,637
Hamilton town, MA.....	7,991	Lindsborg city, KS.....	3,313
Hampton city, VA.....	136,255	Little Chute village, WI.....	11,006
Hanover County, VA.....	103,218	Littleton city, CO.....	45,848
Harrisburg city, SD.....	5,429	Livermore city, CA.....	88,232
Harrisonburg city, VA.....	53,064	Lombard village, IL.....	43,776
Harrisonville city, MO.....	10,025	Lone Tree city, CO.....	13,430
Hastings city, MN.....	22,620	Long Grove village, IL.....	7,980
Henderson city, NV.....	284,817	Longmont city, CO.....	91,730
Herndon town, VA.....	24,545	Lonsdale city, MN.....	3,850
High Point city, NC.....	109,849	Los Alamos County, NM.....	18,031
Highland Park city, IL.....	29,796	Los Altos Hills town, CA.....	8,490
Highlands Ranch CDP, CO.....	105,264	Loudoun County, VA.....	374,558
Homer Glen village, IL.....	24,403	Louisville city, CO.....	20,319
Honolulu County, HI.....	990,060	Lower Merion township, PA.....	58,500
Hoquiam city, WA.....	8,416	Lynchburg city, VA.....	79,237
Horry County, SC.....	310,186	Lynnwood city, WA.....	37,242
Hudson town, CO.....	1,709	Manassas city, VA.....	41,379
Huntley village, IL.....	26,265	Manhattan Beach city, CA.....	35,698
Huntsville city, TX.....	40,727	Manhattan city, KS.....	55,427
Hutchinson city, MN.....	13,836	Mankato city, MN.....	41,241
Hutto city, TX.....	22,644	Maple Grove city, MN.....	68,362
Independence city, MO.....	117,369	Maplewood city, MN.....	40,127
Indio city, CA.....	86,867	Maricopa County, AZ.....	4,155,501
Iowa City city, IA.....	73,415	Marin County, CA.....	260,814
Irving city, TX.....	235,648	Marion city, IA.....	38,014
Issaquah city, WA.....	35,629	Mariposa County, CA.....	17,658
Jackson city, MO.....	14,690	Marshfield city, WI.....	18,326
Jackson County, MI.....	158,989	Martinez city, CA.....	37,902
James City County, VA.....	73,028	Marysville city, WA.....	66,178
Jefferson County, NY.....	116,567	Maui County, HI.....	164,094
Jefferson Parish, LA.....	437,038	McKinney city, TX.....	164,760
Jerome city, ID.....	11,306	McMinnville city, OR.....	33,211
Johnson City city, TN.....	65,598	Mecklenburg County, NC.....	1,034,290
Johnston city, IA.....	20,172	Menlo Park city, CA.....	33,661
Jupiter town, FL.....	62,373	Menomonee Falls village, WI.....	36,411
Kalamazoo city, MI.....	75,833	Mercer Island city, WA.....	24,768
Kansas City city, KS.....	151,042	Meridian charter township, MI.....	41,903
Kansas City city, MO.....	476,974	Meridian city, ID.....	91,917
Keizer city, OR.....	37,910	Merriam city, KS.....	11,259
Kent city, WA.....	126,561	Mesa city, AZ.....	479,317
Kerrville city, TX.....	22,931	Miami Beach city, FL.....	92,187
Key West city, FL.....	25,316	Miami city, FL.....	443,007
King City city, CA.....	13,721	Middleton city, WI.....	18,951
Kingman city, AZ.....	28,855	Middletown town, RI.....	16,100
Kirkland city, WA.....	86,772	Midland city, MI.....	41,958
Kirkwood city, MO.....	27,659	Milford city, DE.....	10,645
Knoxville city, IA.....	7,202	Milton city, GA.....	37,556
La Plata town, MD.....	9,160	Minneapolis city, MN.....	411,452
La Vista city, NE.....	17,062	Minnetrissa city, MN.....	7,187
Laguna Niguel city, CA.....	65,429	Missouri City city, TX.....	72,688
Lake Forest city, IL.....	18,931	Moline city, IL.....	42,644
Lake in the Hills village, IL.....	28,908	Monroe city, MI.....	20,128
Lake Zurich village, IL.....	19,983	Montgomery city, MN.....	2,921
Lakeville city, MN.....	61,056	Montgomery County, MD.....	1,039,198
Lakewood city, CO.....	151,411	Monticello city, UT.....	2,599

The National Community Survey™

Montrose city, CO	18,918	Polk County, IA	467,235
Moraga town, CA	17,231	Pompano Beach city, FL	107,542
Morristown city, TN	29,446	Port Orange city, FL	60,315
Morrisville town, NC	23,873	Port St. Lucie city, FL	178,778
Morro Bay city, CA	10,568	Portland city, OR	630,331
Mountlake Terrace city, WA	20,922	Powell city, OH	12,658
Murphy city, TX	20,361	Powhatan County, VA	28,364
Naperville city, IL	146,431	Prince William County, VA	450,763
Napoleon city, OH	8,646	Prior Lake city, MN	25,452
Nederland city, TX	17,284	Pueblo city, CO	109,122
Needham CDP, MA	30,429	Purcellville town, VA	9,217
Nevada City city, CA	3,112	Queen Creek town, AZ	33,298
Nevada County, CA	98,838	Raleigh city, NC	449,477
New Braunfels city, TX	70,317	Ramsey city, MN	25,853
New Brighton city, MN	22,440	Raymond town, ME	4,497
New Concord village, OH	2,561	Raymore city, MO	20,358
New Hope city, MN	20,909	Redmond city, OR	28,492
New Orleans city, LA	388,182	Redmond city, WA	60,712
New Ulm city, MN	13,249	Redwood City city, CA	84,368
Newport city, RI	24,745	Reno city, NV	239,732
Newport News city, VA	180,775	Richland city, WA	53,991
Newton city, IA	15,085	Richmond city, CA	108,853
Niles village, IL	29,823	Richmond Heights city, MO	8,466
Noblesville city, IN	59,807	Rio Rancho city, NM	93,317
Norcross city, GA	16,474	River Falls city, WI	15,256
Norfolk city, NE	24,352	Riverside city, CA	321,570
Norfolk city, VA	245,752	Roanoke city, VA	99,572
North Mankato city, MN	13,583	Roanoke County, VA	93,419
North Port city, FL	62,542	Rochester city, NY	209,463
North Yarmouth town, ME	3,714	Rock Hill city, SC	70,764
Northglenn city, CO	38,473	Rockville city, MD	66,420
Novato city, CA	55,378	Roeland Park city, KS	6,810
Novi city, MI	58,835	Rohnert Park city, CA	42,305
O'Fallon city, IL	29,095	Rolla city, MO	20,013
Oak Park village, IL	52,229	Rosemount city, MN	23,474
Oakley city, CA	39,950	Rosenberg city, TX	35,867
Oklahoma City city, OK	629,191	Roseville city, MN	35,624
Olmsted County, MN	151,685	Round Rock city, TX	116,369
Olympia city, WA	49,928	Royal Palm Beach village, FL	37,665
Orange village, OH	3,280	Sacramento city, CA	489,650
Orland Park village, IL	59,161	Sahuarita town, AZ	28,257
Orleans Parish, LA	388,182	Sammamish city, WA	62,877
Oshkosh city, WI	66,649	San Diego city, CA	1,390,966
Oswego village, IL	33,759	San Jose city, CA	1,023,031
Ottawa County, MI	280,243	San Marcos city, CA	93,493
Overland Park city, KS	186,147	San Marcos city, TX	59,935
Paducah city, KY	24,879	Sangamon County, IL	198,134
Palm Beach Gardens city, FL	53,119	Santa Fe city, NM	82,980
Palm Coast city, FL	82,356	Santa Fe County, NM	147,514
Palo Alto city, CA	67,082	Sarasota County, FL	404,839
Palos Verdes Estates city, CA	13,591	Savage city, MN	30,011
Papillion city, NE	19,478	Schaumburg village, IL	74,427
Paradise Valley town, AZ	13,961	Schertz city, TX	38,199
Park City city, UT	8,167	Scott County, MN	141,463
Parker town, CO	51,125	Scottsdale city, AZ	239,283
Parkland city, FL	28,901	Sedona city, AZ	10,246
Pasco city, WA	70,607	Sevierville city, TN	16,387
Pasco County, FL	498,136	Shakopee city, MN	40,024
Payette city, ID	7,366	Sharonville city, OH	13,974
Pearland city, TX	113,693	Shawnee city, KS	64,840
Peoria city, IL	115,424	Shawnee city, OK	30,974
Pflugerville city, TX	58,013	Sherborn town, MA	4,302
Pinehurst village, NC	15,580	Shoreline city, WA	55,431
Piqua city, OH	20,793	Shoreview city, MN	26,432
Pitkin County, CO	17,747	Shorewood village, IL	16,809
Plano city, TX	281,566	Sierra Vista city, AZ	43,585
Platte City city, MO	4,867	Silverton city, OR	9,757
Pleasant Hill city, IA	9,608	Sioux Falls city, SD	170,401
Pleasanton city, CA	79,341	Skokie village, IL	64,773
Plymouth city, MN	76,258	Snoqualmie city, WA	12,944

The National Community Survey™

Snowmass Village town, CO.....	2,827	Ventura CCD, CA.....	115,218
Somerset town, MA.....	18,257	Vernon Hills village, IL.....	26,084
South Jordan city, UT.....	65,523	Vestavia Hills city, AL.....	34,003
Southlake city, TX.....	30,090	Victoria city, MN.....	8,679
Spearfish city, SD.....	11,300	Vienna town, VA.....	16,474
Springfield city, MO.....	165,785	Virginia Beach city, VA.....	450,057
Springville city, UT.....	32,319	Walnut Creek city, CA.....	68,516
St. Augustine city, FL.....	13,952	Warrensburg city, MO.....	19,890
St. Charles city, IL.....	32,730	Washington County, MN.....	250,979
St. Joseph city, MO.....	76,819	Washoe County, NV.....	445,551
St. Louis County, MN.....	200,294	Washougal city, WA.....	15,241
St. Lucie County, FL.....	298,763	Wauwatosa city, WI.....	47,687
State College borough, PA.....	42,224	Wentzville city, MO.....	35,768
Steamboat Springs city, CO.....	12,520	West Carrollton city, OH.....	12,963
Sugar Land city, TX.....	86,886	West Chester township, OH.....	62,804
Suisun City city, CA.....	29,280	Western Springs village, IL.....	13,187
Summit County, UT.....	39,731	Westerville city, OH.....	38,604
Sunnyvale city, CA.....	151,565	Westlake town, TX.....	1,006
Surprise city, AZ.....	129,534	Westminster city, CO.....	111,895
Suwanee city, GA.....	18,655	Westminster city, MD.....	18,557
Tacoma city, WA.....	207,280	Wheat Ridge city, CO.....	31,162
Takoma Park city, MD.....	17,643	White House city, TN.....	11,107
Temecula city, CA.....	110,722	Wichita city, KS.....	389,054
Tempe city, AZ.....	178,339	Williamsburg city, VA.....	14,817
Temple city, TX.....	71,795	Willowbrook village, IL.....	8,598
Texarkana city, TX.....	37,222	Wilmington city, NC.....	115,261
The Woodlands CDP, TX.....	109,608	Wilsonville city, OR.....	22,789
Tigard city, OR.....	51,355	Windsor town, CO.....	23,386
Tinley Park village, IL.....	57,107	Windsor town, CT.....	29,037
Tracy city, CA.....	87,613	Winnetka village, IL.....	12,504
Trinidad CCD, CO.....	10,819	Winter Garden city, FL.....	40,799
Tualatin city, OR.....	27,135	Woodbury city, MN.....	67,648
Tulsa city, OK.....	401,352	Woodinville city, WA.....	11,675
Tustin city, CA.....	80,007	Wyandotte County, KS.....	163,227
Twin Falls city, ID.....	47,340	Yakima city, WA.....	93,182
Unalaska city, AK.....	4,809	York County, VA.....	67,196
University Heights city, OH.....	13,201	Yorktown town, IN.....	11,200
University Park city, TX.....	24,692	Yorkville city, IL.....	18,691
Urbandale city, IA.....	42,222	Yountville city, CA.....	2,978
Vail town, CO.....	5,425		

Peer Community Benchmark Comparisons

Table 81: Community Characteristics General

	Percent positive	Rank	Number of communities in comparison	Comparison to benchmark
The overall quality of life in Elk Grove	80%	12	19	Similar
Overall image or reputation of Elk Grove	72%	9	14	Similar
Elk Grove as a place to live	84%	10	16	Similar
Your neighborhood as a place to live	87%	7	14	Similar
Elk Grove as a place to raise children	84%	6	15	Similar
Elk Grove as a place to retire	61%	5	15	Similar
Overall appearance of Elk Grove	79%	5	13	Higher

Table 82: Community Characteristics by Facet

		Percent positive	Rank	Number of communities in comparison	Comparison to benchmark	
Safety	Overall feeling of safety in Elk Grove	75%	9	15	Similar	
	In your neighborhood during the day	93%	10	15	Similar	
	In Elk Grove's downtown/commercial area during the day	86%	9	14	Similar	
Mobility	Overall ease of getting to the places you usually have to visit	63%	9	14	Similar	
	Availability of paths and walking trails	70%	7	14	Similar	
	Ease of walking in Elk Grove	66%	6	14	Similar	
	Ease of travel by bicycle in Elk Grove	54%	8	14	Similar	
	Ease of travel by public transportation in Elk Grove	37%	7	14	Similar	
	Ease of travel by car in Elk Grove	59%	8	14	Similar	
	Ease of public parking	65%	2	12	Higher	
	Traffic flow on major streets	32%	10	16	Similar	
Natural Environment	Quality of overall natural environment in Elk Grove	72%	8	14	Similar	
	Cleanliness of Elk Grove	74%	5	13	Higher	
	Air quality	71%	7	14	Similar	
Built Environment	Overall "built environment" of Elk Grove (including overall design, buildings, parks and transportation systems)	66%	3	14	Similar	
	Overall quality of new development in Elk Grove	50%	8	13	Similar	
	Availability of affordable quality housing	37%	3	14	Higher	
	Variety of housing options	52%	2	14	Higher	
	Public places where people want to spend time	61%	9	14	Similar	
Economy	Overall economic health of Elk Grove	69%	8	14	Similar	
	Vibrant downtown/commercial area	32%	10	12	Lower	
	Overall quality of business and service establishments in Elk Grove	58%	9	14	Similar	
	Cost of living in Elk Grove	38%	4	14	Higher	
	Shopping opportunities	51%	10	15	Similar	
	Employment opportunities	35%	11	14	Similar	
	Elk Grove as a place to visit	44%	11	14	Lower	
	Elk Grove as a place to work	51%	12	15	Similar	
	Recreation and Wellness	Health and wellness opportunities in Elk Grove	73%	5	14	Similar
		Availability of affordable quality mental health care	52%	3	13	Similar
Availability of preventive health services		69%	6	14	Similar	
Availability of affordable quality health care		69%	5	14	Similar	
Availability of affordable quality food		66%	6	14	Similar	
Recreational opportunities		63%	7	14	Similar	
	Fitness opportunities (including exercise classes and paths or trails, etc.)	68%	7	14	Similar	

The National Community Survey™

		Percent positive	Rank	Number of communities in comparison	Comparison to benchmark
Education and Enrichment	Overall opportunities for education and enrichment	73%	6	14	Similar
	Opportunities to participate in religious or spiritual events and activities	71%	8	12	Similar
	Opportunities to attend cultural/arts/music activities	54%	12	14	Similar
	Adult educational opportunities	62%	10	14	Similar
	K-12 education	80%	6	14	Similar
	Availability of affordable quality child care/preschool	49%	6	12	Similar
Community Engagement	Opportunities to participate in social events and activities	51%	11	14	Similar
	Neighborhoodliness of Elk Grove	58%	6	14	Similar
	Openness and acceptance of the community toward people of diverse backgrounds	65%	4	14	Similar
	Opportunities to participate in community matters	55%	10	15	Similar
	Opportunities to volunteer	59%	13	15	Similar

Table 83: Governance General

	Percent positive	Rank	Number of communities in comparison	Comparison to benchmark
Services provided by the City of Elk Grove	72%	10	22	Similar
Overall customer service by Elk Grove employees (police, receptionists, planners, etc.)	72%	8	14	Similar
Value of services for the taxes paid to Elk Grove	45%	7	14	Similar
Overall direction that Elk Grove is taking	51%	7	14	Similar
Job Elk Grove government does at welcoming resident involvement	53%	6	14	Similar
Overall confidence in Elk Grove government	45%	9	14	Similar
Generally acting in the best interest of the community	51%	8	14	Similar
Being honest	52%	8	13	Similar
Treating all residents fairly	51%	6	14	Similar
Services provided by the Federal Government	37%	3	13	Similar

Table 84: Governance by Facet

		Percent positive	Rank	Number of communities in comparison	Comparison to benchmark
Safety	Police/Sheriff services	82%	10	20	Similar
	Crime prevention	68%	7	15	Similar
	Animal control	63%	9	15	Similar
	Emergency preparedness (services that prepare the community for natural disasters or other emergency situations)	53%	9	15	Similar
	Traffic enforcement	59%	5	15	Similar
Mobility	Street repair	53%	5	17	Similar
	Street cleaning	66%	6	14	Similar
	Street lighting	71%	5	13	Similar
	Sidewalk maintenance	66%	3	14	Higher
	Traffic signal timing	50%	7	13	Similar
	Bus or transit services	52%	6	14	Similar
	Garbage collection	87%	3	15	Similar
Natural Environment	Recycling	82%	4	13	Similar
	Yard waste pick-up	85%	3	13	Similar
	Drinking water	62%	7	12	Similar
	Preservation of natural areas such as open space, farmlands and greenbelts	53%	7	14	Similar
	Elk Grove open space	51%	7	12	Similar

The National Community Survey™

		Percent positive	Rank	Number of communities in comparison	Comparison to benchmark
Built Environment	Storm drainage	73%	3	15	Similar
	Sewer services	78%	6	13	Similar
	Power (electric and/or gas) utility	78%	2	10	Similar
	Utility billing	64%	6	11	Similar
	Land use, planning and zoning	42%	9	14	Similar
	Code enforcement (weeds, abandoned buildings, etc.)	43%	7	16	Similar
	Cable television	51%	7	11	Similar
Economy	Economic development	49%	7	14	Similar
Recreation and Wellness	City parks	83%	6	13	Similar
	Recreation programs or classes	73%	9	17	Similar
	Recreation centers or facilities	77%	6	14	Similar
	Health services	71%	3	10	Similar
Education and Enrichment	City-sponsored special events	65%	6	11	Similar
	Public library services	82%	11	17	Similar
Community Engagement	Public information services	65%	9	14	Similar

The National Community Survey™

Table 85: Participation General

	Percent positive	Rank	Number of communities in comparison	Comparison to benchmark
Sense of community	58%	7	14	Similar
Recommend living in Elk Grove to someone who asks	88%	6	14	Similar
Remain in Elk Grove for the next five years	86%	5	14	Similar
Contacted Elk Grove (in-person, phone, email or web) for help or information	37%	12	17	Similar

Table 86: Participation by Facet

		Percent positive	Rank	Number of communities in comparison	Comparison to benchmark
Safety	Stocked supplies in preparation for an emergency	44%	9	14	Similar
	Did NOT report a crime to the police	75%	9	14	Similar
	Household member was NOT a victim of a crime	89%	5	14	Similar
Mobility	Used bus, rail, subway or other public transportation instead of driving	16%	11	14	Lower
	Carpooled with other adults or children instead of driving alone	58%	4	14	Similar
	Walked or biked instead of driving	58%	8	14	Similar
Natural Environment	Made efforts to conserve water	91%	11	14	Similar
	Made efforts to make your home more energy efficient	77%	9	14	Similar
	Recycle at home	97%	5	13	Similar
Built Environment	Did NOT observe a code violation or other hazard in Elk Grove	51%	8	14	Similar
	NOT experiencing housing costs stress	55%	10	14	Similar
Economy	Purchase goods or services from a business located in Elk Grove	97%	9	14	Similar
	Economy will have positive impact on income	32%	6	14	Similar
	Work inside boundaries of Elk Grove	31%	11	14	Lower
Recreation and Wellness	Visited a neighborhood park or City park	91%	3	14	Similar
	Eat at least 5 portions of fruits and vegetables a day	85%	12	14	Similar
	Participate in moderate or vigorous physical activity	89%	6	14	Similar
	In very good to excellent health	62%	12	14	Similar
Education and Enrichment	Used Elk Grove public libraries or their services	53%	11	14	Similar
	Participated in religious or spiritual activities in Elk Grove	43%	4	11	Similar
	Attended City-sponsored event	53%	4	13	Similar
Community Engagement	Campaigned or advocated for an issue, cause or candidate	15%	13	14	Lower
	Contacted Elk Grove elected officials (in-person, phone, email or web) to express your opinion	15%	9	14	Similar
	Volunteered your time to some group/activity in Elk Grove	37%	9	14	Similar
	Participated in a club	25%	9	14	Similar
	Talked to or visited with your immediate neighbors	92%	5	14	Similar
	Done a favor for a neighbor	79%	9	14	Similar
	Attended a local public meeting	16%	11	14	Similar
	Watched (online or on television) a local public meeting	23%	6	13	Similar

The National Community Survey™

	Percent positive	Rank	Number of communities in comparison	Comparison to benchmark
Read or watch local news (via television, paper, computer, etc.)	83%	10	14	Similar
Vote in local elections	89%	6	14	Similar

Communities included in peer comparisons

The communities included in Elk Grove’s custom comparisons (California jurisdictions with populations of 60,000 or greater) are listed below along with their population according to the American Community Survey (ACS) 2017 5-year estimates.

Carlsbad city, CA	113,147	Richmond city, CA	108,853
Clovis city, CA	104,411	Riverside city, CA	321,570
Concord city, CA	128,160	Sacramento city, CA	489,650
Cupertino city, CA	60,687	San Diego city, CA	1,390,966
Elk Grove city, CA	166,228	San Jose city, CA	1,023,031
Fremont city, CA	230,964	San Marcos city, CA.....	93,493
Indio city, CA	86,867	Sunnyvale city, CA	151,565
Laguna Niguel city, CA	65,429	Temecula city, CA	110,722
Livermore city, CA.....	88,232	Tracy city, CA	87,613
Marin County, CA	260,814	Tustin city, CA	80,007
Nevada County, CA	98,838	Ventura CCD, CA.....	115,218
Palo Alto city, CA.....	67,082	Walnut Creek city, CA.....	68,516
Pleasanton city, CA	79,341		
Redwood City city, CA	84,368		

Appendix C: Detailed Survey Methods

The National Community Survey™ (The NCS™), conducted by National Research Center, Inc., was developed to provide communities an accurate, affordable and easy way to assess and interpret resident opinion about important local topics. Standardization of common questions and survey methods provide the rigor to assure valid results, and each community has enough flexibility to construct a customized version of The NCS.

Results offer insight into residents' perspectives about the community as a whole, including local amenities, services, public trust, resident participation and other aspects of the community in order to support budgeting, land use and strategic planning and communication with residents. Resident demographic characteristics permit comparison to the Census as well as comparison of results for different subgroups of residents. The City of Elk Grove funded this research. Please contact Carrie Whitlock of the City of Elk Grove at cwhitlock@elkgrovecity.org if you have any questions about the survey.

Survey Validity

The question of survey validity has two parts: 1) how can a community be confident that the results from those who completed the questionnaire are representative of the results that would have been obtained had the survey been administered to the entire population? and 2) how closely do the perspectives recorded on the survey reflect what residents really believe or do?

To answer the first question, the best survey research practices were used for the resources spent to ensure that the results from the survey respondents reflect the opinions of residents in the entire community. These practices include:

- Using a mail-out/mail-back methodology, which typically gets a higher response rate than phone for the same dollars spent. A higher response rate lessens the worry that those who did not respond are different than those who did respond.
- Selecting households at random within the community to receive the survey to ensure that the households selected to receive the survey are representative of the larger community.
- Over-sampling multi-family housing units to improve response from hard-to-reach, lower income or younger apartment dwellers.
- Selecting the respondent within the household using an unbiased sampling procedure; in this case, the "birthday method." The cover letter included an instruction requesting that the respondent in the household be the adult (18 years old or older) who most recently had a birthday, irrespective of year of birth.
- Contacting potential respondents three times to encourage response from people who may have different opinions or habits than those who would respond with only a single prompt.
- Inviting response in a compelling manner (using appropriate letterhead/logos and a signature of a visible leader) to appeal to recipients' sense of civic responsibility.
- Providing a pre-addressed, postage-paid return envelope.
- Offering the survey in Spanish or other language when requested by a given community.
- Weighting the results to reflect the demographics of the population.

The answer to the second question about how closely the perspectives recorded on the survey reflect what residents really believe or do is more complex. Resident responses to surveys are influenced by a variety of factors. For questions about service quality, residents' expectations for service quality play a role as well as the "objective" quality of the service provided, the way the resident perceives the entire community (that is, the context in which the service is provided), the scale on which the resident is asked to record his or her opinion and, of course, the opinion, itself, that a resident holds about the service. Similarly a resident's report of certain behaviors is colored by what he or she believes is the socially desirable response (e.g., reporting tolerant behaviors toward "oppressed groups," likelihood of voting for a tax increase for services to poor people, use of alternative modes of travel to work besides the single occupancy vehicle), his or her memory of the actual behavior (if it is not a question speculating about future actions, like a vote), his or her confidence that he or she can be honest without suffering any negative consequences (thus the need for anonymity) as well as the actual behavior itself.

How closely survey results come to recording the way a person really feels or behaves often is measured by the coincidence of reported behavior with observed current behavior (e.g., driving habits), reported intentions to behave with observed future behavior (e.g., voting choices) or reported opinions about current community quality

with objective characteristics of the community (e.g., feelings of safety correlated with rates of crime). There is a body of scientific literature that has investigated the relationship between reported behaviors and actual behaviors. Well-conducted surveys, by and large, do capture true respondent behaviors or intentions to act with great accuracy. Predictions of voting outcomes tend to be quite accurate using survey research, as do reported behaviors that are not about highly sensitive issues (e.g., family abuse or other illegal or morally sanctioned activities). For self-reports about highly sensitive issues, statistical adjustments can be made to correct for the respondents' tendency to report what they think the "correct" response should be.

Research on the correlation of resident opinion about service quality and "objective" ratings of service quality vary, with some showing stronger relationships than others. NRC's own research has demonstrated that residents who report the lowest ratings of street repair live in communities with objectively worse street conditions than those who report high ratings of street repair (based on road quality, delay in street repair, number of road repair employees). Similarly, the lowest rated fire services appear to be "objectively" worse than the highest rated fire services (expenditures per capita, response time, "professional" status of firefighters, breadth of services and training provided). Resident opinion commonly reflects objective performance data but is an important measure on its own. NRC principals have written, "If you collect trash three times a day but residents think that your trash haul is lousy, you still have a problem."

Selecting Survey Recipients

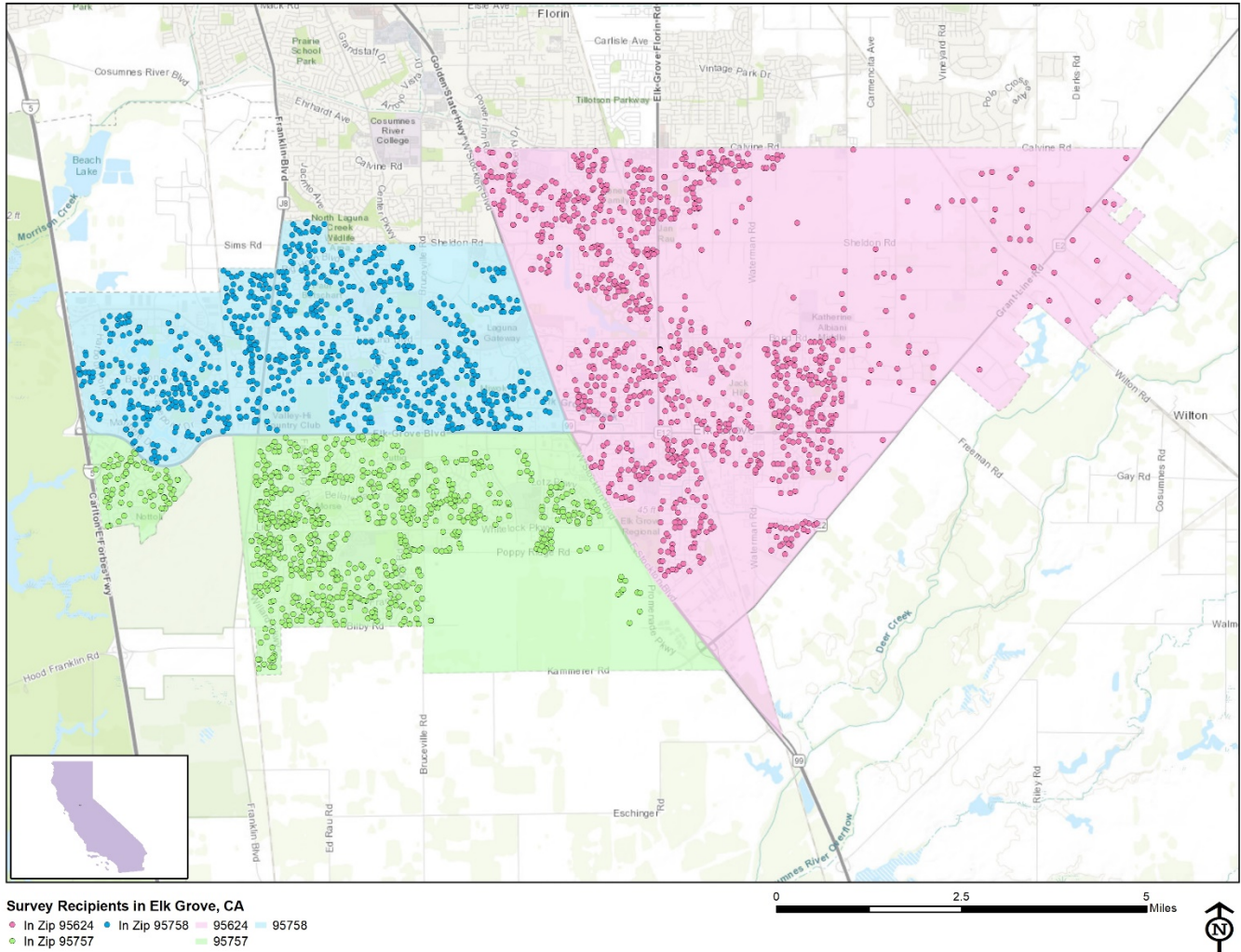
"Sampling" refers to the method by which households were chosen to receive the survey. All households within the City of Elk Grove were eligible to participate in the survey. A list of all households within the zip codes serving Elk Grove was purchased from Go-Dog Direct based on updated listings from the United States Postal Service. Since some of the zip codes that serve the City of Elk Grove households may also serve addresses that lie outside of the community, the exact geographic location of each housing unit was compared to community boundaries using the most current municipal boundary file (updated on a quarterly basis) and addresses located outside of the City of Elk Grove boundaries were removed from consideration. Each address identified as being within City boundaries was further identified as being within one of the three zip codes that serve the city.

To choose the 2,900 survey recipients, a systematic sampling method was applied to the list of households previously screened for geographic location. Systematic sampling is a procedure whereby a complete list of all possible households is culled, selecting every *Nth* one, giving each eligible household a known probability of selection, until the appropriate number of households is selected. Multi-family housing units were selected at a higher rate as residents of this type of housing typically respond at lower rates to surveys than do those in single-family housing units. Figure 1 displays a map of the households selected to receive the survey. In general, because of the random sampling techniques used, the displayed sampling density will closely mirror the overall housing unit density (which may be different from the population density). While the theory of probability assumes no bias in selection, there may be some minor variations in practice (meaning, an area with only 15% of the housing units might be selected at an actual rate that is slightly above or below that).

An individual within each household was selected using the birthday method. The birthday method selects a person within the household by asking the "person whose birthday has most recently passed" to complete the questionnaire. The underlying assumption in this method is that day of birth has no relationship to the way people respond to surveys. This instruction was contained in the cover letter accompanying the questionnaire.

In addition to the scientific, random selection of households, a link to an online "opt-in" survey was publicized and posted to the City of Elk Grove website. This opt-in survey was identical to the scientific survey and open to all City residents. (The data presented in this report exclude the opt-in survey data. These data can be found in the *Supplemental Online Survey Results* provided under separate cover.)

Figure 1: Location of Survey Recipients



Survey Administration and Response

Selected households received three mailings, one week apart, beginning on October 18, 2019. The first mailing was a prenotification postcard announcing the upcoming survey. The next mailing contained a letter from the Mayor inviting the household to participate, a questionnaire and a postage-paid return envelope. The final mailing contained a reminder letter, another survey and a postage-paid return envelope. The second cover letter asked those who had not completed the survey to do so and those who had already done so to refrain from turning in another survey. The survey was available in English. The cover letters included a URL through which the residents selected for the mail survey could choose to respond online rather than by mail. The City of Elk Grove chose to augment their administration of The NCS with several additional services, including demographic and geographic subgroup comparisons, custom benchmark comparisons and an open-ended question. The results of these additional services have been provided under separate cover. Completed surveys were collected over the following seven weeks. The online “opt-in” survey became available to all residents on November 22, 2019 and remained open for two weeks.

About 1% of the 2,900 surveys mailed were returned because the housing unit was vacant or the postal service was unable to deliver the survey as addressed. Of the remaining 2,871 households that received the survey, 494 completed the survey, providing an overall response rate of 17%. Of the 494 completed surveys, 65 were completed online. Additionally, responses were tracked by zip code; response rates by zip code ranged from 17% to 18%. The response rates were calculated using AAPOR’s response rate #2¹ for mailed surveys of unnamed

¹ See AAPOR’s Standard Definitions here: [http://www.aapor.org/Standards-Ethics/Standard-Definitions-\(1\).aspx](http://www.aapor.org/Standards-Ethics/Standard-Definitions-(1).aspx) for more information

persons. Additionally, 404 residents completed the online opt-in survey; results of the opt-in survey can be found in the *Supplemental Online Survey Results* report provided under separate cover.

Table 87: Survey Response Rates by Area

	95624	95757	95758	Overall
Total sample used	1,039	842	1,019	2,900
I=Complete Interviews	182	138	166	486
P=Partial Interviews	3	3	2	8
R=Refusal and break off	0	0	0	0
NC=Non Contact	0	0	0	0
O=Other	0	0	0	0
UH=Unknown household	0	0	0	0
UO=Unknown other	844	698	835	2,377
NE=Not eligible	10	3	16	29
Response rate: (I+P)/(I+P) + (R+NC+O) + (UH+UO)	18%	17%	17%	17%

Confidence Intervals

It is customary to describe the precision of estimates made from surveys by a “level of confidence” and accompanying “confidence interval” (or margin of error). A traditional level of confidence, and the one used here, is 95%. The 95% confidence interval can be any size and quantifies the sampling error or imprecision of the survey results because some residents’ opinions are relied on to estimate all residents’ opinions.²

The margin of error for the City of Elk Grove survey is no greater than plus or minus four percentage points around any given percent reported for all respondents (494 completed surveys).

For subgroups of responses, the margin of error increases because the number of respondents for the subgroup is smaller.

Survey Processing (Data Entry)

Upon receipt, completed surveys were assigned a unique identification number. Additionally, each survey was reviewed and “cleaned” as necessary. For example, a question may have asked a respondent to pick two items out of a list of five, but the respondent checked three; in this case, NRC would use protocols to randomly choose two of the three selected items for inclusion in the dataset.

All surveys then were entered twice into an electronic dataset; any discrepancies were resolved in comparison to the original survey form. Range checks as well as other forms of quality control were also performed.

NRC used SurveyGizmo, a web-based survey and analytics platform, to collect the online survey data. Use of an online system means all collected data are entered into the dataset when the respondents submit the surveys. Skip patterns are programmed into the system so respondents are automatically “skipped” to the appropriate question based on the individual responses being given. Online programming also allows for more rigid control of the data format, making extensive data cleaning unnecessary.

A series of quality control checks were also performed in order to ensure the integrity of the web data. Steps include, but are not limited to, reviewing the data for clusters of repeat IP addresses and time stamps (indicating duplicate responses) and removing empty submissions (questionnaires submitted with no questions answered).

² A 95% confidence interval indicates that for every 100 random samples of this many residents, 95 of the confidence intervals created will include the “true” population response. This theory is applied in practice to mean that the “true” perspective of the target population lies within the confidence interval created for a single survey. For example, if 75% of residents rate a service as “excellent” or “good,” then the 4% margin of error (for the 95% confidence interval) indicates that the range of likely responses for the entire community is between 71% and 79%. This source of uncertainty is called sampling error. In addition to sampling error, other sources of error may affect any survey, including the non-response of residents with opinions different from survey responders. Though standardized on The NCS, on other surveys, differences in question wording, order, translation and data entry, as examples, can lead to somewhat varying results.

Survey Data Weighting

Upon completion of data collection for both the scientific (probability) and nonscientific open participation online opt-in (non-probability) surveys, the demographics of each dataset were separately compared to those found in the 2010 Census and 2017 American Community Survey estimates for adults in the City of Elk Grove. The primary objective of weighting survey data is to make the survey respondents reflective of the larger population of the community. Both survey datasets were weighted independently to best match the Census. The characteristics used for weighting were housing tenure, race, sex, and age. No adjustments were made for design effects. Results for the opt-in survey have been provided under separate cover.

Table 88: Elk Grove, CA 2019 Weighting Table

Characteristic	Population Norm	Unweighted Data	Weighted Data
Housing			
Rent home	27%	13%	25%
Own home	73%	87%	75%
Detached unit*	88%	92%	88%
Attached unit*	12%	8%	12%
Race and Ethnicity			
White	48%	57%	48%
Not white	52%	43%	52%
Not Hispanic	84%	85%	85%
Hispanic	16%	15%	15%
Sex and Age			
Female	53%	57%	53%
Male	47%	43%	47%
18-34 years of age	29%	8%	27%
35-54 years of age	39%	33%	39%
55+ years of age	32%	59%	33%
Females 18-34	15%	5%	15%
Females 35-54	21%	18%	20%
Females 55+	18%	34%	17%
Males 18-34	14%	3%	12%
Males 35-54	18%	15%	19%
Males 55+	14%	25%	16%
Zip code			
95624	35%	37%	35%
95757	30%	29%	32%
95758	34%	34%	34%

* U.S. Census Bureau ACS 2017 5-year estimates

Survey Data Analysis and Reporting

The survey dataset was analyzed using the Statistical Package for the Social Sciences (SPSS). For the most part, the percentages presented in the reports represent the “percent positive.” The percent positive is the combination of the top two most positive response options (i.e., “excellent” and “good,” “very safe” and “somewhat safe,” “essential” and “very important,” etc.), or, in the case of resident behaviors/participation, the percent positive represents the proportion of respondents indicating “yes” or participating in an activity at least once a month.

On many of the questions in the survey respondents may answer “don’t know.” The proportion of respondents giving this reply is shown in the full set of responses included in Appendix A. However, these responses have been removed from the analyses presented in the reports. In other words, the tables and graphs display the responses from respondents who had an opinion about a specific item. When a table for a question that only permitted a single response does not total to exactly 100%, it is due to the common practice of percentages being rounded to the nearest whole number.

The data for the opt-in survey are presented separately in the report titled *Supplemental Online Survey Results*.

Appendix D: Survey Materials

Dear Elk Grove Resident,

It won't take much of your time to make a big difference!

Your household has been randomly selected to participate in a survey about your community. Your survey will arrive in a few days.

Thank you for helping create a better City!

Sincerely,

A handwritten signature in blue ink that reads "Steve Ly". The "S" is large and stylized, and the "Ly" is written in a cursive-like script.

Steve Ly
Mayor



City of Elk Grove
8401 Laguna Palms Way
Elk Grove, CA 95758

Presorted
First Class Mail
US Postage
PAID
Boulder, CO
Permit NO. 94



City of Elk Grove
8401 Laguna Palms Way
Elk Grove, CA 95758

Presorted
First Class Mail
US Postage
PAID
Boulder, CO
Permit NO.94

Phone: 916.683.7111
Fax: 916.627.4200

Web: www.elkgrovecity.org

8401 Laguna Palms Way
Elk Grove, California 95758



October 2019

Dear City of Elk Grove Resident:

Please help us shape the future of Elk Grove! You have been selected at random to participate in the 2019 Elk Grove Community Survey.

Please take a few minutes to fill out the enclosed survey. Your participation in this survey is very important – especially since your household is one of only a small number of households being surveyed. Your feedback will help Elk Grove make decisions that affect our City.

A few things to remember:

- **Your responses are completely anonymous.**
- In order to hear from a diverse group of residents, the adult 18 years or older in your household who most recently had a birthday should complete this survey.
- **You may return the survey by mail in the enclosed postage-paid envelope, or you can complete the survey online at:**

<http://bit.ly/xxplaceholder>

Please do not share your survey link. This survey is for randomly selected households only. The City will conduct a separate survey that is open to all residents just a few weeks from now.

If you have any questions about the survey please call 916-478-2238.

Thank you for your time and participation!

Sincerely,

A handwritten signature in blue ink that reads "Steve Ly". The signature is written in a cursive style with a large, stylized "L" and "y".

Steve Ly
Mayor

Phone: 916.683.7111
Fax: 916.627.4200

Web: www.elkgrovecity.org

8401 Laguna Palms Way
Elk Grove, California 95758



November 2019

Dear City of Elk Grove Resident:

Here's a second chance if you haven't already responded to the 2019 Elk Grove Community Survey! **(If you completed it and sent it back, we thank you for your time and ask you to recycle this survey. Please do not respond twice.)**

Please help us shape the future of Elk Grove! You have been selected at random to participate in the 2019 Elk Grove Community Survey.

Please take a few minutes to fill out the enclosed survey. Your participation in this survey is very important – especially since your household is one of only a small number of households being surveyed. Your feedback will help Elk Grove make decisions that affect our City.

A few things to remember:

- **Your responses are completely anonymous.**
- In order to hear from a diverse group of residents, the adult 18 years or older in your household who most recently had a birthday should complete this survey.
- **You may return the survey by mail in the enclosed postage-paid envelope, or you can complete the survey online at:**

<http://bit.ly/xxplaceholder>

Please do not share your survey link. This survey is for randomly selected households only. The City will conduct a separate survey that is open to all residents just a few weeks from now.

If you have any questions about the survey please call 916-478-2238.

Thank you for your time and participation!

Sincerely,

A handwritten signature in blue ink that reads "Steve Ly". The signature is stylized, with the first letters of "Steve" and "Ly" being larger and more prominent.

Steve Ly
Mayor

The City of Elk Grove 2019 Community Survey

Please complete this questionnaire if you are the adult (age 18 or older) in the household who most recently had a birthday. The adult's year of birth does not matter. Please select the response (by circling the number or checking the box) that most closely represents your opinion for each question. Your responses are anonymous and will be reported in group form only.

1. Please rate each of the following aspects of quality of life in Elk Grove:

	<i>Excellent</i>	<i>Good</i>	<i>Fair</i>	<i>Poor</i>	<i>Don't know</i>
Elk Grove as a place to live	1	2	3	4	5
Your neighborhood as a place to live.....	1	2	3	4	5
Elk Grove as a place to raise children	1	2	3	4	5
Elk Grove as a place to work	1	2	3	4	5
Elk Grove as a place to visit	1	2	3	4	5
Elk Grove as a place to retire.....	1	2	3	4	5
The overall quality of life in Elk Grove.....	1	2	3	4	5

2. Please rate each of the following characteristics as they relate to Elk Grove as a whole:

	<i>Excellent</i>	<i>Good</i>	<i>Fair</i>	<i>Poor</i>	<i>Don't know</i>
Overall feeling of safety in Elk Grove	1	2	3	4	5
Overall ease of getting to the places you usually have to visit.....	1	2	3	4	5
Quality of overall natural environment in Elk Grove	1	2	3	4	5
Overall "built environment" of Elk Grove (including overall design, buildings, parks and transportation systems)	1	2	3	4	5
Health and wellness opportunities in Elk Grove.....	1	2	3	4	5
Overall opportunities for education and enrichment.....	1	2	3	4	5
Overall economic health of Elk Grove	1	2	3	4	5
Sense of community.....	1	2	3	4	5
Overall image or reputation of Elk Grove	1	2	3	4	5

3. Please indicate how likely or unlikely you are to do each of the following:

	<i>Very likely</i>	<i>Somewhat likely</i>	<i>Somewhat unlikely</i>	<i>Very unlikely</i>	<i>Don't know</i>
Recommend living in Elk Grove to someone who asks	1	2	3	4	5
Remain in Elk Grove for the next five years.....	1	2	3	4	5

4. Please rate how safe or unsafe you feel:

	<i>Very safe</i>	<i>Somewhat safe</i>	<i>Neither safe nor unsafe</i>	<i>Somewhat unsafe</i>	<i>Very unsafe</i>	<i>Don't know</i>
In your neighborhood during the day.....	1	2	3	4	5	6
In Elk Grove's downtown/commercial area during the day	1	2	3	4	5	6

5. Please rate each of the following characteristics as they relate to Elk Grove as a whole:

	<i>Excellent</i>	<i>Good</i>	<i>Fair</i>	<i>Poor</i>	<i>Don't know</i>
Traffic flow on major streets	1	2	3	4	5
Ease of public parking.....	1	2	3	4	5
Ease of travel by car in Elk Grove	1	2	3	4	5
Ease of travel by public transportation in Elk Grove	1	2	3	4	5
Ease of travel by bicycle in Elk Grove	1	2	3	4	5
Ease of walking in Elk Grove	1	2	3	4	5
Availability of paths and walking trails	1	2	3	4	5
Air quality	1	2	3	4	5
Cleanliness of Elk Grove.....	1	2	3	4	5
Overall appearance of Elk Grove	1	2	3	4	5
Public places where people want to spend time	1	2	3	4	5
Variety of housing options	1	2	3	4	5
Availability of affordable quality housing	1	2	3	4	5
Fitness opportunities (including exercise classes and paths or trails, etc.)	1	2	3	4	5
Recreational opportunities.....	1	2	3	4	5
Availability of affordable quality food.....	1	2	3	4	5
Availability of affordable quality health care	1	2	3	4	5
Availability of preventive health services	1	2	3	4	5
Availability of affordable quality mental health care	1	2	3	4	5

6. Please rate each of the following characteristics as they relate to Elk Grove as a whole:

	<i>Excellent</i>	<i>Good</i>	<i>Fair</i>	<i>Poor</i>	<i>Don't know</i>
Availability of affordable quality child care/preschool.....	1	2	3	4	5
K-12 education.....	1	2	3	4	5
Adult educational opportunities.....	1	2	3	4	5
Opportunities to attend cultural/arts/music activities.....	1	2	3	4	5
Opportunities to participate in religious or spiritual events and activities.....	1	2	3	4	5
Employment opportunities.....	1	2	3	4	5
Shopping opportunities.....	1	2	3	4	5
Cost of living in Elk Grove.....	1	2	3	4	5
Overall quality of business and service establishments in Elk Grove.....	1	2	3	4	5
Vibrant downtown/commercial area.....	1	2	3	4	5
Overall quality of new development in Elk Grove.....	1	2	3	4	5
Opportunities to participate in social events and activities.....	1	2	3	4	5
Opportunities to volunteer.....	1	2	3	4	5
Opportunities to participate in community matters.....	1	2	3	4	5
Openness and acceptance of the community toward people of diverse backgrounds.....	1	2	3	4	5
Neighborliness of residents in Elk Grove.....	1	2	3	4	5

7. Please indicate whether or not you have done each of the following in the last 12 months.

	<i>No</i>	<i>Yes</i>
Made efforts to conserve water.....	1	2
Made efforts to make your home more energy efficient.....	1	2
Observed a code violation or other hazard in Elk Grove (weeds, abandoned buildings, etc.).....	1	2
Household member was a victim of a crime in Elk Grove.....	1	2
Reported a crime to the police in Elk Grove.....	1	2
Stocked supplies in preparation for an emergency.....	1	2
Campaigned or advocated for an issue, cause or candidate.....	1	2
Contacted the City of Elk Grove (in-person, phone, email or web) for help or information.....	1	2
Contacted Elk Grove elected officials (in-person, phone, email or web) to express your opinion.....	1	2

8. In the last 12 months, about how many times, if at all, have you or other household members done each of the following in Elk Grove?

	<i>2 times a week or more</i>	<i>2-4 times a month</i>	<i>Once a month or less</i>	<i>Not at all</i>
Visited a neighborhood park or City park.....	1	2	3	4
Used Elk Grove public libraries or their services.....	1	2	3	4
Participated in religious or spiritual activities in Elk Grove.....	1	2	3	4
Attended a City-sponsored event.....	1	2	3	4
Used bus, rail, subway or other public transportation instead of driving.....	1	2	3	4
Carpooled with other adults or children instead of driving alone.....	1	2	3	4
Walked or biked instead of driving.....	1	2	3	4
Volunteered your time to some group/activity in Elk Grove.....	1	2	3	4
Participated in a club.....	1	2	3	4
Talked to or visited with your immediate neighbors.....	1	2	3	4
Done a favor for a neighbor.....	1	2	3	4

9. Thinking about local public meetings (of local elected officials like City Council or County Commissioners, advisory boards, town halls, HOA, neighborhood watch, etc.), in the last 12 months, about how many times, if at all, have you or other household members attended or watched a local public meeting?

	<i>2 times a week or more</i>	<i>2-4 times a month</i>	<i>Once a month or less</i>	<i>Not at all</i>
<u>Attended</u> a local public meeting.....	1	2	3	4
<u>Watched</u> (online or on television) a local public meeting.....	1	2	3	4

The City of Elk Grove 2019 Community Survey

10. Please rate the quality of each of the following services in Elk Grove:

	<i>Excellent</i>	<i>Good</i>	<i>Fair</i>	<i>Poor</i>	<i>Don't know</i>
Police/Sheriff services.....	1	2	3	4	5
Crime prevention.....	1	2	3	4	5
Traffic enforcement.....	1	2	3	4	5
Street repair.....	1	2	3	4	5
Street cleaning.....	1	2	3	4	5
Street lighting.....	1	2	3	4	5
Sidewalk maintenance.....	1	2	3	4	5
Traffic signal timing.....	1	2	3	4	5
Bus or transit services.....	1	2	3	4	5
Garbage collection.....	1	2	3	4	5
Recycling.....	1	2	3	4	5
Yard waste pick-up.....	1	2	3	4	5
Storm drainage.....	1	2	3	4	5
Drinking water.....	1	2	3	4	5
Sewer services.....	1	2	3	4	5
Power (electric and/or gas) utility.....	1	2	3	4	5
Utility billing.....	1	2	3	4	5
City parks.....	1	2	3	4	5
Recreation programs or classes.....	1	2	3	4	5
Recreation centers or facilities.....	1	2	3	4	5
Land use, planning and zoning.....	1	2	3	4	5
Code enforcement (weeds, abandoned buildings, etc.).....	1	2	3	4	5
Animal control.....	1	2	3	4	5
Economic development.....	1	2	3	4	5
Health services.....	1	2	3	4	5
Public library services.....	1	2	3	4	5
Public information services.....	1	2	3	4	5
Cable television.....	1	2	3	4	5
Emergency preparedness (services that prepare the community for natural disasters or other emergency situations).....	1	2	3	4	5
Preservation of natural areas such as open space, farmlands and greenbelts.....	1	2	3	4	5
Elk Grove open space.....	1	2	3	4	5
City-sponsored special events.....	1	2	3	4	5
Overall customer service by Elk Grove employees (police, receptionists, planners, etc.).....	1	2	3	4	5

11. Overall, how would you rate the quality of the services provided by each of the following?

	<i>Excellent</i>	<i>Good</i>	<i>Fair</i>	<i>Poor</i>	<i>Don't know</i>
The City of Elk Grove.....	1	2	3	4	5
The Federal Government.....	1	2	3	4	5

12. Please rate the following categories of Elk Grove government performance:

	<i>Excellent</i>	<i>Good</i>	<i>Fair</i>	<i>Poor</i>	<i>Don't know</i>
The value of services for the taxes paid to Elk Grove.....	1	2	3	4	5
The overall direction that Elk Grove is taking.....	1	2	3	4	5
The job Elk Grove government does at welcoming resident involvement.....	1	2	3	4	5
Overall confidence in Elk Grove government.....	1	2	3	4	5
Generally acting in the best interest of the community.....	1	2	3	4	5
Being honest.....	1	2	3	4	5
Treating all residents fairly.....	1	2	3	4	5

13. Please rate how important, if at all, you think it is for the Elk Grove community to focus on each of the following in the coming two years:

	<i>Essential</i>	<i>Very important</i>	<i>Somewhat important</i>	<i>Not at all important</i>
Overall feeling of safety in Elk Grove	1	2	3	4
Overall ease of getting to the places you usually have to visit	1	2	3	4
Quality of overall natural environment in Elk Grove	1	2	3	4
Overall “built environment” of Elk Grove (including overall design, buildings, parks and transportation systems)	1	2	3	4
Health and wellness opportunities in Elk Grove	1	2	3	4
Overall opportunities for education and enrichment.....	1	2	3	4
Overall economic health of Elk Grove	1	2	3	4
Sense of community.....	1	2	3	4

14. On average, about how often did you use City of Elk Grove trails or bikeways in the past 12 months?

- Daily or almost daily 1 or 2 times a week A few times a month Once a month or less Not at all

15. If you use the trails or bikeways - what activities do you usually engage in? (Mark all that apply.)

- Walking Jogging/running Biking Skateboarding/rollerblading
 Walking pet Other

16. On average, about how often did you ride a bicycle in the past 12 months?

- Daily or almost daily 1 or 2 times a week A few times a month Once a month or less Not at all

17. Would you like to ride a bicycle more often?

- Yes No Not applicable/I am physically unable to ride a bicycle

18. Which of the following do you consider to be reasons that you do not bike more frequently? (Mark all that apply.)

- Not enough bike lanes on streets Bike lanes are not physically separated from car traffic
 Not enough paved, off-street bike/multi-use trails Improvements needed to bike path/trail connectivity
 Not enough opportunities to combine bicycling and public transportation (i.e., bus, light rail, etc.) Not enough on-road bike signage
 Lack of enforcement of vehicle speed limits Not enough education, incentive, and/or enforcement programs
 Don't have showers and/or lockers at work Not enough bicycle parking/storage
 Physical limitations/I am unable to bike I'm content, no changes needed
 None – I do not want to bicycle Other

19. Please indicate your level of agreement with each of the following statements:

	<i>Strongly agree</i>	<i>Somewhat agree</i>	<i>Somewhat disagree</i>	<i>Strongly disagree</i>	<i>Don't know/not applicable</i>
Bicycling is a convenient way to get from one place to another	1	2	3	4	5
I worry about being hit by a motor vehicle when riding a bicycle in my area.....	1	2	3	4	5
I worry about my personal safety when riding a bicycle in my area (e.g. being mugged, etc.).....	1	2	3	4	5
I am familiar with the bicycle lanes, paths, and trails in my area	1	2	3	4	5
I am satisfied with the number and condition of the bike lanes, paths, and trails in my area.....	1	2	3	4	5
It is easy to combine bicycling and public transit in my area.....	1	2	3	4	5
I would be more likely to ride a bicycle if motor vehicles and bicycles were physically separated by a barrier	1	2	3	4	5
I feel more safe riding a bicycle in Elk Grove now than I did five years ago	1	2	3	4	5

20. Which of the following do you consider to be reasons that you do not walk more frequently? (Mark all that apply.)

- Missing sidewalk sections/poor sidewalk conditions Destinations are too far away
 Unsafe intersections Bad weather
 Speeding cars/unsafe driving Too much to carry
 Personal safety I don't like to walk
 Visually unappealing surroundings Physical limitations/I am unable to walk
 Too few crossings Other

21. What do you think is the most critical challenge facing the City of Elk Grove in the next 5 years?

The City of Elk Grove 2019 Community Survey

Our last questions are about you and your household. Again, all of your responses to this survey are completely anonymous and will be reported in group form only.

D1. How often, if at all, do you do each of the following, considering all of the times you could?

	<i>Never</i>	<i>Rarely</i>	<i>Sometimes</i>	<i>Usually</i>	<i>Always</i>
Recycle at home	1	2	3	4	5
Purchase goods or services from a business located in Elk Grove	1	2	3	4	5
Eat at least 5 portions of fruits and vegetables a day	1	2	3	4	5
Participate in moderate or vigorous physical activity	1	2	3	4	5
Read or watch local news (via television, paper, computer, etc.)	1	2	3	4	5
Vote in local elections.....	1	2	3	4	5

D2. Would you say that in general your health is:

- Excellent
 Very good
 Good
 Fair
 Poor

D3. What impact, if any, do you think the economy will have on your family income in the next 6 months? Do you think the impact will be:

- Very positive
 Somewhat positive
 Neutral
 Somewhat negative
 Very negative

D4. What is your employment status?

- Working full time for pay
 Working part time for pay
 Unemployed, looking for paid work
 Unemployed, not looking for paid work
 Fully retired

D5. Do you work inside the boundaries of Elk Grove?

- Yes, outside the home
 Yes, from home
 No

D6. How many years have you lived in Elk Grove?

- Less than 2 years 11-20 years
 2-5 years More than 20 years
 6-10 years

D7. Which best describes the building you live in?

- One family house detached from any other houses
 Building with two or more homes (duplex, townhome, apartment or condominium)
 Mobile home
 Other

D8. Is this house, apartment or mobile home...

- Rented
 Owned

D9. About how much is your monthly housing cost for the place you live (including rent, mortgage payment, property tax, property insurance and homeowners' association (HOA) fees)?

- Less than \$300 per month
 \$300 to \$599 per month
 \$600 to \$999 per month
 \$1,000 to \$1,499 per month
 \$1,500 to \$2,499 per month
 \$2,500 or more per month

D10. Do any children 17 or under live in your household?

- No Yes

D11. Are you or any other members of your household aged 65 or older?

- No Yes

D12. How much do you anticipate your household's total income before taxes will be for the current year? (Please include in your total income money from all sources for all persons living in your household.)

- Less than \$25,000
 \$25,000 to \$49,999
 \$50,000 to \$99,999
 \$100,000 to \$149,999
 \$150,000 or more

Please respond to both questions D13 and D14:

D13. Are you Spanish, Hispanic or Latino?

- No, not Spanish, Hispanic or Latino
 Yes, I consider myself to be Spanish, Hispanic or Latino

D14. What is your race? (Mark one or more races to indicate what race you consider yourself to be.)

- American Indian or Alaskan Native
 Asian, Asian Indian or Pacific Islander
 Black or African American
 White
 Other

D15. In which category is your age?

- 18-24 years 55-64 years
 25-34 years 65-74 years
 35-44 years 75 years or older
 45-54 years

D16. What is your sex?

- Female Male

D17. Do you consider a cell phone or land line your primary telephone number?

- Cell Land line Both

Thank you for completing this survey. Please return the completed survey in the postage-paid envelope to: National Research Center, Inc., PO Box 549, Belle Mead, NJ 08502