

GENERAL PLAN UPDATE



Joint Study Session

July 28, 2016



AGENDA

- Progress and Process Update
- Policy Input and Direction

THUS FAR...

- ✓ Existing Conditions Report
- ✓ Shared Community Vision and Supporting Principles
- ✓ Issues and Policy Considerations Report
- ✓ Opportunity Sites
- ✓ Land Use Alternative Concepts
- ✓ Policy Topic Papers (ongoing)

Continued Efforts and Research



THUS FAR...

Community Engagement

- ✓ Citizens Planning Academy
- ✓ Community Visioning Workshop
- ✓ Mobile studios – Issue Identification
- ✓ Individual and Group Meetings
- ✓ Topic Workshops
- ✓ Online Workshop – Opportunity Sites
- ✓ In-person Listening Sessions on Opportunity Sites
- ✓ HOA and Community Group Meetings

Since last May Study Session:

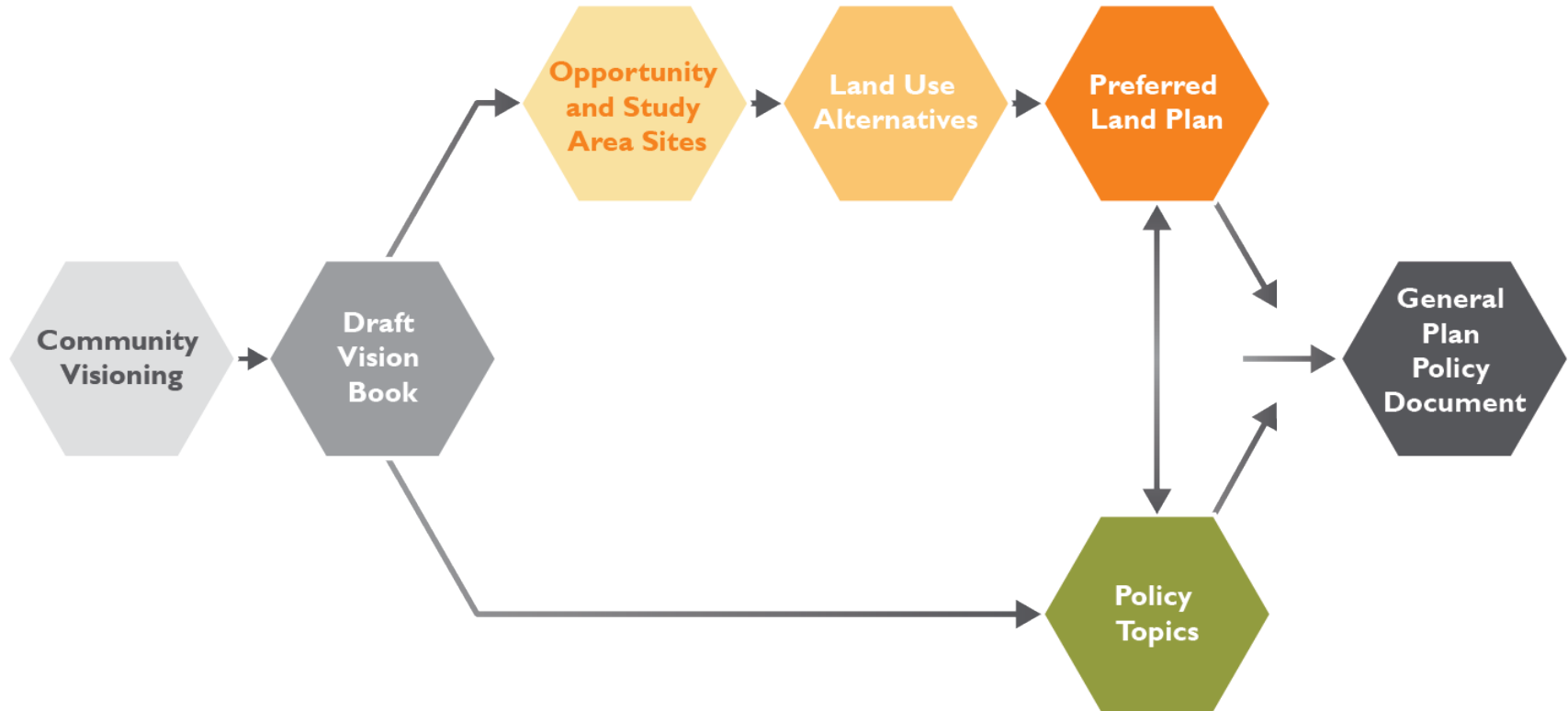
- ✓ *Online Workshop – Land Use Alternative Concepts*
- ✓ *In-person Listening Sessions on Land Use Alternative Concepts*



KEY ISSUES AND SUPPORTING PRINCIPLES



PROCESS



POLICY INPUT AND DIRECTION



MEETING PURPOSE

- Review topic information presented
- Discuss implementation options presented and consider range of solutions
- Provide direction to staff on how topic is to be incorporated in the General Plan

The information presented is a starting point and does not represent final product. The intent is to have a discussion of these topics and identify the best solutions for Elk Grove.

POLICY TOPICS AND RECOMMENDATIONS

- 9 Policy Topic Papers
- Papers on each topic provide context, considerations, and recommendations
- Summary recommendations describe the content that may eventually go in the plan. The balance is context for the recommendation
- There will continue to be opportunity for additional direction in the General Plan Update process

Policy Topics	
Specific Plans and Special Planning Areas	✓
Community and Area Plans	✓
Governance	←
Complete Streets	←
Fixed Transit	←
Jobs/Housing	←
Clustering	→
Annexation Strategy	→
Mobility Standards	→

May 26

Tonight

Future Meeting

POLICY TOPICS AND RECOMMENDATIONS

3.0 - GOVERNANCE



4.0 – COMPLETE STREETS



5.0 FIXED TRANSIT



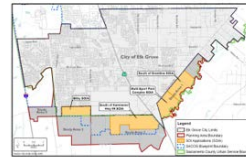
6.0 – CLUSTERING POLICY



7.0 – JOBS/HOUSING



8.0 – ANNEXATION STRATEGY



9.0 – MOBILITY SYSTEMS STANDARDS



3.0 - GOVERNANCE



Effective governance includes both civic engagement from community members and decisions made by elected and appointed representatives of the community.

General Plan Guidance and Implementation

- Primary policy document for the City for future development and conservation decisions
- Supported by and implemented through the Zoning Code, Design Guidelines, Land Development regulations, Specific Plans
- Consistency with the General Plan is required.
- Amendments to the General Plan are evaluated against required findings, specifically a requirement to **“demonstrate to the City Council that there is a substantial benefit to be derived from the amendment”**

GOVERNANCE

Civic Engagement

- An active community that participates in civic decision-making has greater influence over its quality of life
- Civic engagement is a right and responsibility
- City should provide clear avenues for public participation
- Be clear in applicable standards for evaluation

Traditional Methods	Nontraditional Methods
Direct mailing and emails	Community-led outreach programs
Online surveys	Pop-up workshops
City newsletter	Interactive online workshops
Outreach through City committees	Collaboration with established neighborhood groups

3.1 Consider the following for incorporation into the General Plan:

Goal: A Collaborative and Predictable Decision-making Process

- Establish criteria for determining consistency with the General Plan and for evaluating amendments to the General Plan
- Provide a variety of outreach methods to maximize participation
- Facilitate coordination with other agencies

Goal: An Engaged and Informed Community

- Present information clearly
- Provide opportunities for education on topics affecting the community

POLICY TOPICS AND RECOMMENDATIONS

3.0 - GOVERNANCE



4.0 – COMPLETE STREETS



5.0 FIXED TRANSIT



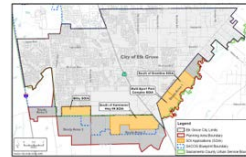
6.0 – CLUSTERING POLICY



7.0 – JOBS/HOUSING



8.0 – ANNEXATION STRATEGY



9.0 – MOBILITY SYSTEMS STANDARDS



4.0 – COMPLETE STREETS

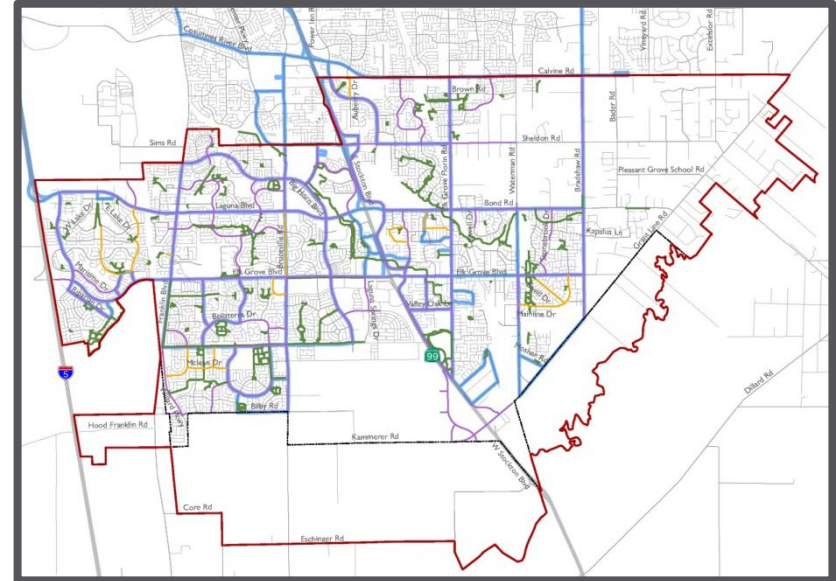


COMPLETE STREETS

Background

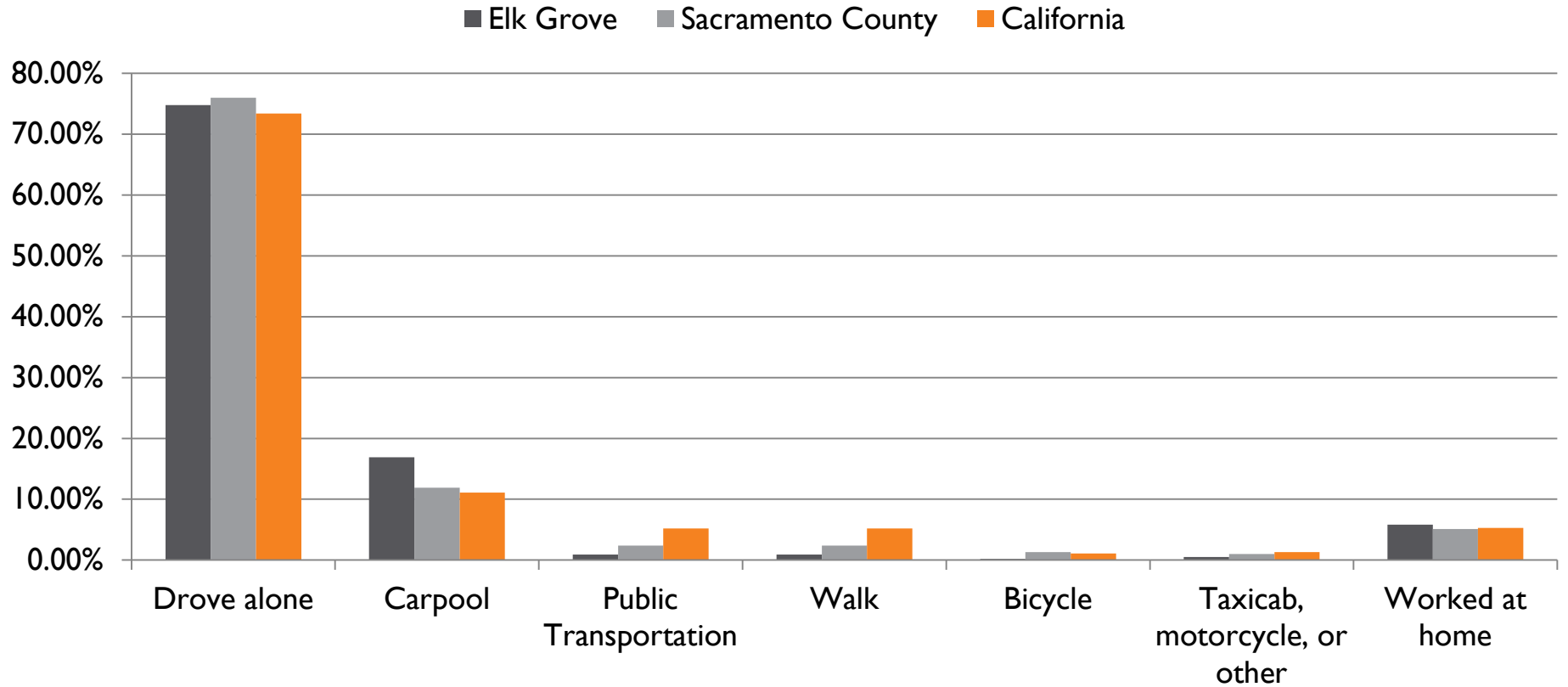
The Complete Streets Act (2008) requires a multimodal transportation system **“that meets the needs of all users...in a manner that is suitable to the rural, suburban, or urban context”**

- Bus Routes
- Trails and Sidewalks
- Bicycle Facilities



COMPLETE STREETS

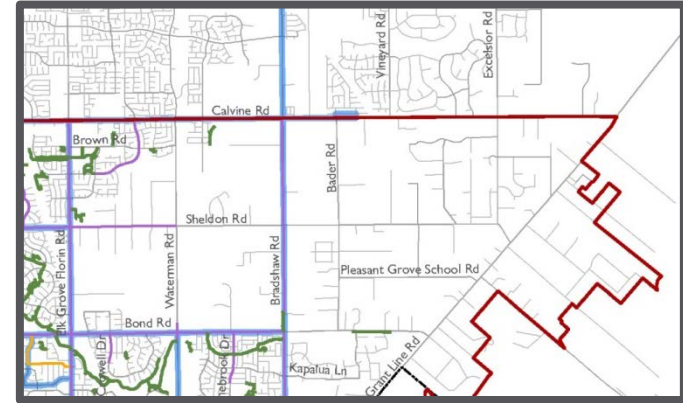
Existing Commute Patterns



COMPLETE STREETS

Community Context : Rural Area

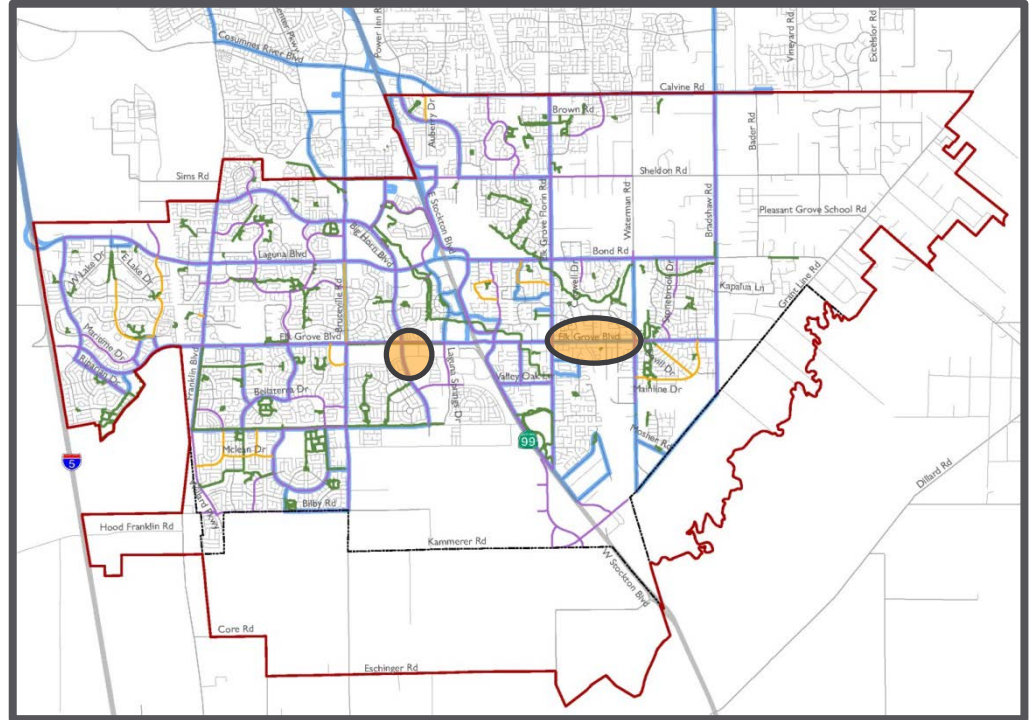
1. The City will not pursue Rural area-wide mobility improvements at this time
2. The City will conduct an engineering study to determine feasible options for traffic-calming measures on major roadways in the Rural Area in response to prevalent concerns about speeds and volumes of vehicular traffic
3. ***The City will use the outreach effort and report to inform the General Plan Circulation Element policy discussion for the Rural Area, specifically regarding complete streets considerations***



COMPLETE STREETS

Community Context : Pedestrian-oriented Areas

- Relates to:
 - Pedestrian
 - Bicycle
 - Transit
- Examples include:
 - Old Town
 - Civic Center
 - Future transit stations



- 4.1 Identify targeted street segments in the Rural Area that may be the focus for developing street-specific mobility improvements
- 4.2 Identify pedestrian-oriented areas to guide applicability of targeted policies and design considerations
- 4.3 Consider the following for incorporation into the General Plan:
Goal: The Transportation System Meets Resident, Employee, and Visitor Needs
 - Recognize the needs of all segments of the population
 - Retrofit existing roads to enhance multimodal access
 - Identify and plan for goods movement
 - Leverage infrastructure improvements and technology to improve efficiency

Goal: A Connected and Convenient Transit System

- Connect streets, trails, and transit
- Focus on improvements that complete the local and regional circulation network
- Update and expand wayfinding signage

Goal: Context-Sensitive Design for Complete Streets

- Update the City's improvement standards to incorporate all modes of transportation
- Designs for complete streets should be appropriate for the location and context
- Allow for flexibility in design that responds to location and context

COMPLETE STREETS

Summary Recommendations

Goal: Safety in All Modes of Travel

- Ensure visibility of pedestrians at intersections
- Incorporate traffic-calming measures when possible and appropriate
- Provide the safest form of a bike path feasible
- Conduct awareness campaigns and educational services

POLICY TOPICS AND RECOMMENDATIONS

3.0 - GOVERNANCE



4.0 – COMPLETE STREETS



5.0 FIXED TRANSIT



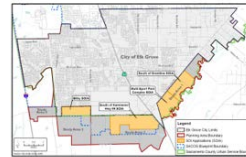
6.0 – CLUSTERING POLICY



7.0 – JOBS/HOUSING



8.0 – ANNEXATION STRATEGY



9.0 – MOBILITY SYSTEMS STANDARDS



5.0 FIXED TRANSIT



FIXED TRANSIT

Existing and Proposed Services

Fixed transit includes public transportation services that run along an established route in accordance with a preset schedule

- Bus service (existing)
- Bus rapid transit (proposed)
- Light rail (proposed)
- Multimodal transportation facility (proposed)



FIXED TRANSIT

Influencing Factors

Transit Service and Infrastructure

- Largest impact through policies supporting service provision, including prioritizing resources for transit systems

Land Use and Design

- Largest impact through land use planning and design

Factor	General Plan Land Use Consideration
Access	Accommodating all modes of transportation (pedestrian, bicycle, vehicular) within ½ mile of transit stops
Land use intensity	Concentrating jobs within ¼ mile of transit stops Concentrating higher density residential development within ½ mile of transit stops
Land use variety	Planning for a variety of land uses including jobs, residences, entertainment, and service amenities

5.1 Amend the General Plan Land Use Map and/or land use designation descriptions to provide for increased densities and a mix of uses on opportunity sites, where appropriate.

5.2 Consider the following for incorporation into the General Plan:

Goal: The Transportation System Meets Residents, Employee, and Visitor Needs

- Offer bus routes and schedules that recognize the needs of all segments of the population and provide increased opportunities for their mobility
- Strongly advocate for local and state funding to finance upgrades to services, facilities, and routes

Goal: A Connected and Efficient Transit System

- Coordinate connections between local and regional transit systems
- Use the results of the Comprehensive Transit Analysis to configure routes and systems that address system deficiencies and capitalize on opportunities
- Consider alternative service models to augment and fixed-route services
- Identify and minimize potential impediments to transit users
- Consider access to and from designated transit routes and stops

POLICY TOPICS AND RECOMMENDATIONS

3.0 - GOVERNANCE



4.0 – COMPLETE STREETS



5.0 FIXED TRANSIT



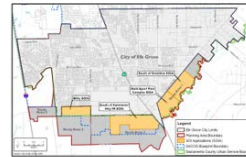
6.0 – CLUSTERING POLICY



7.0 – JOBS/HOUSING



8.0 – ANNEXATION STRATEGY



9.0 – MOBILITY SYSTEMS STANDARDS



7.0 – JOBS/HOUSING



JOBS/HOUSING

Background

A **jobs/housing ratio** is a calculation of jobs per housing units in a given area

Example: A jobs/housing ratio of 1:1 means there is one job for every housing unit

- Current City target:
1 job for every housing unit (1:1)
- Current SACOG regional target:
1.4 jobs for each housing unit (1.4:1)

Jobs/Housing Ratio	
Low Jobs/Housing (Ratio < 1.0)	Can indicate a housing-rich community with fewer jobs available for its residents
High Jobs/Housing (Ratio > 1.0)	Can indicate a jobs-rich area with more jobs available for residents

JOBS/HOUSING

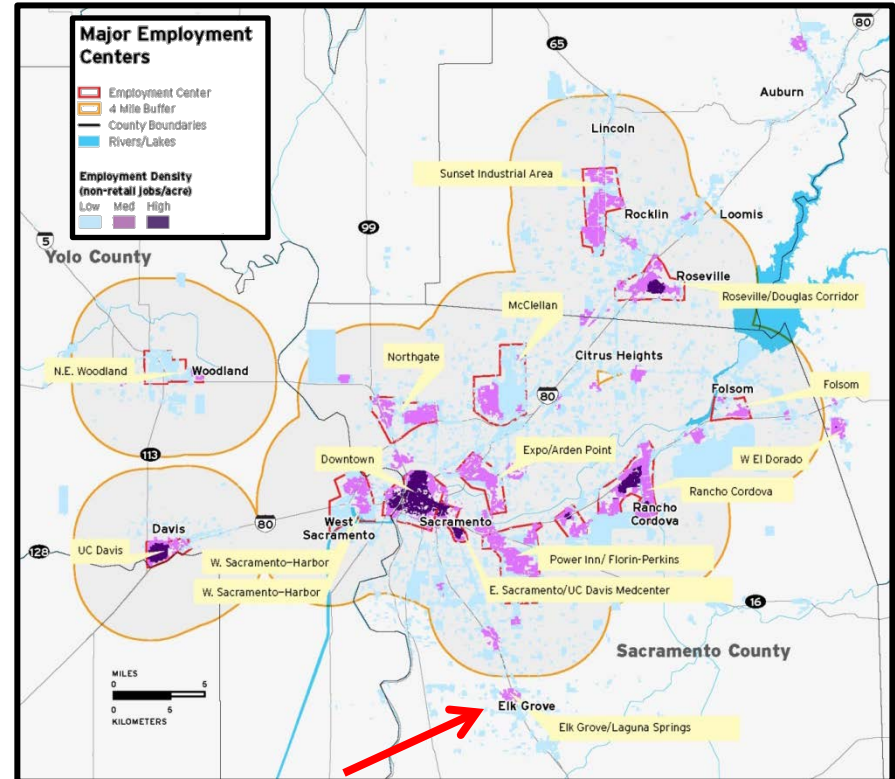
Indicators of Economic Health

Indicator	Concept
Jobs/housing ratio	<ul style="list-style-type: none">• A calculation of jobs per housing units in a given area
Locally employed workforce	<ul style="list-style-type: none">• Number of jobs available in Elk Grove held by residents of Elk Grove
Worker inflow/outflow	<ul style="list-style-type: none">• Inflow: Number of commuters who come in to Elk Grove for work• Outflow: Number of commuters who live in Elk Grove but work elsewhere
Quality of available jobs	<ul style="list-style-type: none">• Wages• Resident Skills and Education Levels• Industry Multiplier
Land use preferences	<ul style="list-style-type: none">• Land demand and availability• Infrastructure needs

JOBS/HOUSING

- Close to Sacramento, which is a major employment center
- Elk Grove enjoys relatively lower housing prices and generally offers more amenities
- Greater need to match jobs with skill sets of potential employees living in Elk Grove

Considerations: Location in the Region



7.1 Consider the following for incorporation into the General Plan:

Goal: A Higher Jobs/Housing Ratio, Range of Housing Options, and More Residents Employed Locally

- Objectives:
 - 1:1 jobs/housing ratio by 2025
 - 1.2:1 jobs/housing ratio by 2040
 - 35% or more of resident workers will be employed directly by businesses in Elk Grove by 2025
 - 50% or more of resident workers will be employed directly by businesses in Elk Grove by 2040
- Prepare studies to determine the skills of residents and align job creation efforts accordingly

Goal: A New Regional Employment Center

- Designate sufficient areas to achieve Major Employment Center status in the Sacramento region's Sustainable Community Strategy
- Invest in technology and other public infrastructure to attract businesses to Elk Grove

Goal: Balanced and Diverse Economic Growth

- Require and provide for a variety of nonresidential development to attract a diverse range of job opportunities and types
- Continue to provide for and support existing, small, and home-based businesses

POLICY TOPICS AND RECOMMENDATIONS

3.0 - GOVERNANCE



4.0 – COMPLETE STREETS



5.0 FIXED TRANSIT



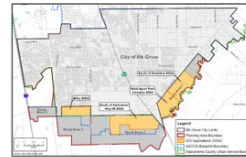
6.0 – CLUSTERING POLICY



7.0 – JOBS/HOUSING



8.0 – ANNEXATION STRATEGY



9.0 – MOBILITY SYSTEMS STANDARDS



Summary of Direction Items

Provide direction on the Policy Topic Paper recommendations:

- Governance
- Complete Streets
- Fixed Transit
- Jobs/Housing



ELK GROVE
A BRIGHTER FUTURE