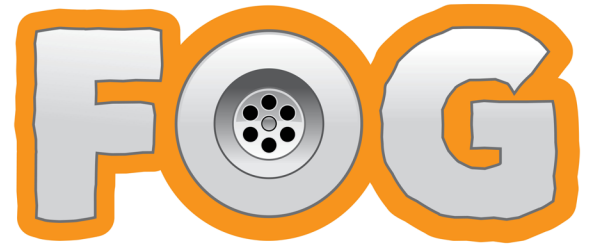
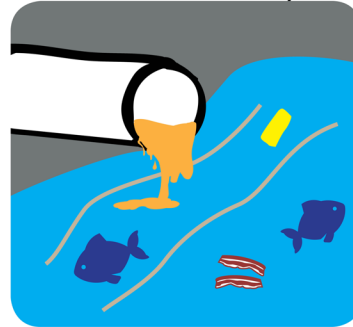
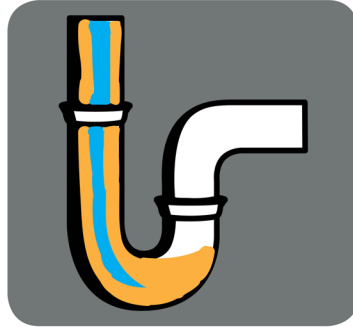


DON'T CLOG WITH



NO FATS, OILS AND GREASE DOWN THE DRAIN



Pouring F.O.G. down the drain clogs pipes. Clogged pipes can overflow in the home and environment which can increase rates and repair cost.



WASH

BEFORE WASHING POTS, pans and dishes, pour the F.O.G. into a seal proof container.



CONTAIN

ALLOWING F.O.G. TO COOL before discarding, will make it easier to handle and dispose of.



RECYCLE

ONCE THE F.O.G. IS IN A seal proof container, store until it's time to Recycle at the Special Waste Collection Center.

Common **F.O.G.** sources include food solids, meat fats, cooking oils, pourable lard & gelatin.

F.O.G. can cling to the insides of pipes and the sewer system and can eventually block pipes completely. If wastewater cannot move freely through pipes and out into the sewer system, it can back up into your home and can cause unsanitary conditions and damages that can be expensive to repair.



**F.O.G. Disposal Stations:
Special Waste Collection Center**

9255 Disposal Lane
Elk Grove, CA 95624

For more information contact us at: 916.627.3232
Sunday through Wednesday: 9:00 a.m. to 4:00 p.m.

For more detailed information about F.O.G. visit:
egtrashrecycleservices.org

