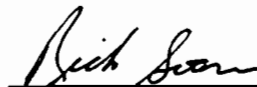


RESOLUTION NO. 2002-212

**A RESOLUTION OF THE CITY COUNCIL OF THE CITY OF ELK GROVE
APPROVING A FINAL MAP OF MERGER AND RESUBDIVISION
NO. EG-SC-904-PM-03 OF LOTS 296 – 305,
JUNGKEIT DAIRY UNIT NO.3 (303 B.M. 1)**

BE IT RESOLVED AND ORDERED that the City Council of the City of Elk Grove pursuant to Government Code Section 66458 hereby approves a Final Map submitted at the Elk Grove City Council meeting in connection with **Beazer Homes Holding Corp., a Delaware Corporation**, and the subdivision designated as Map of Merger and Resubdivision No. EG-SC-904-PM-03 Lots 296-305, Jungkeit Dairy Unit No. 3 (303 B.M. 1).

PASSED AND ADOPTED by the City Council of the City of Elk Grove on this 4th day of December 2002.



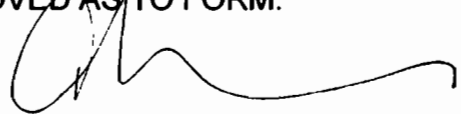
RICK SOARES, MAYOR of the
CITY OF ELK GROVE

ATTEST:



PEGGY JACKSON, CITY CLERK

APPROVED AS TO FORM:



ANTHONY B. MANZANETTI,
CITY ATTORNEY

AYES: Soares, Briggs, Cooper
Scherman, Leary
NOES: None
ABSTAIN: None
ABSENT: None

Attachment 2

Merger and Resubdivision Map

MAP OF MERGER AND RESUBDIVISION NO. EG-SC-904-PM-03 OF

LOTS 294-306, JANESEY DAIRY UNIT NO. 3 (303 BLM.)
CITY OF ELI GROM, COUNTY OF SACRAMENTO, CALIFORNIA
NOVEMBER, 2002
MURRAY SMITH & ASSOCIATES
SHEET 1 OF 2

ADVERTISED RESERVE

THE MAP OF MERGER AND RESUBDIVISION OF LOTS 294-306 OF 'JANESEY DAIRY UNIT NO. 3' (303 BLM.) WAS PROVIDED BY ME OR UNDER MY SUPERVISION AND IS BASED UPON A FIELD SURVEY IN CONFORMANCE WITH THE REQUIREMENTS OF THE SUBDIVISION MAP ACT AND LOCAL ORDINANCES OF THE COUNTY OF SACRAMENTO. I AM A LICENSED PROFESSIONAL SURVEYOR AND I AM NOT PROVIDING ANY WARRANTY OR GUARANTEE OF THE ACCURACY OF THE INFORMATION CONTAINED HEREIN. I AM NOT PROVIDING ANY WARRANTY OR GUARANTEE OF THE ACCURACY OF THE INFORMATION CONTAINED HEREIN. I AM NOT PROVIDING ANY WARRANTY OR GUARANTEE OF THE ACCURACY OF THE INFORMATION CONTAINED HEREIN.

THE UNDERSIGNED HEREBY CERTIFIES TO THE INFORMATION AND REQUIREMENTS OF THE MAP OF MERGER AND RESUBDIVISION OF LOTS 294-306 OF 'JANESEY DAIRY UNIT NO. 3' (303 BLM.)



DATE: _____
DRAFTER: DAVID L. SMITH
EXPIRES: 12-31-08

CITY CLERK'S CERTIFICATE

I HEREBY CERTIFY THAT I HAVE EXAMINED THE MAP OF MERGER AND RESUBDIVISION OF LOTS 294-306 OF 'JANESEY DAIRY UNIT NO. 3' (303 BLM.) AND FIND IT TO BE CONFORMANT WITH THE REQUIREMENTS OF THE SUBDIVISION MAP ACT AND LOCAL ORDINANCES OF THE COUNTY OF SACRAMENTO. I AM NOT PROVIDING ANY WARRANTY OR GUARANTEE OF THE ACCURACY OF THE INFORMATION CONTAINED HEREIN. I AM NOT PROVIDING ANY WARRANTY OR GUARANTEE OF THE ACCURACY OF THE INFORMATION CONTAINED HEREIN. I AM NOT PROVIDING ANY WARRANTY OR GUARANTEE OF THE ACCURACY OF THE INFORMATION CONTAINED HEREIN.

DATE: _____
CITY CLERK: _____
CITY OF ELI GROM, CALIFORNIA

CITY CLERK'S CERTIFICATE

I HEREBY CERTIFY THAT THE COUNCIL OF THE CITY OF ELI GROM HAS APPROVED THIS MAP OF MERGER AND RESUBDIVISION OF LOTS 294-306 OF 'JANESEY DAIRY UNIT NO. 3' (303 BLM.) PURSUANT TO SECTION 56000.10 1/2 OF THE SUBDIVISION MAP ACT. THESE ARE THE PUBLIC RECORDS OF PUBLIC UTILITIES AND ARE NOT TO BE USED FOR ANY OTHER PURPOSE.

DATE: _____
CITY CLERK OF THE CITY COUNCIL
CITY OF ELI GROM, CALIFORNIA

ADVERTISED RESERVE

FILED THIS _____ DAY OF _____ 2002, AT _____ IN THE OFFICE OF THE COUNTY CLERK OF SACRAMENTO COUNTY, CALIFORNIA. A TRUE AND CORRECT COPY OF THIS MAP WAS FILED IN THE OFFICE OF THE COUNTY CLERK OF SACRAMENTO COUNTY, CALIFORNIA.

DATE: _____
RECORDED IN SACRAMENTO COUNTY
BY: _____

OFFICE: _____
CITY OF SACRAMENTO, CALIFORNIA

DATE: _____

PREPARED BY: _____

CITY OF SACRAMENTO, CALIFORNIA

ON _____ BEFORE ME, _____ A NOTARY PUBLIC, PERSONALLY APPEARED _____ A PERSON TO ME ON THE BASIS OF SUBSTANTIATED EVIDENCE TO BE THE PERSON WHOSE NAME IS SUBMITTED TO THE COUNTY CLERK AND ACKNOWLEDGED TO ME THAT HE OR SHE IS THE PERSON ON THE MAP UPON WHOM THE PERSONS OF WHICH THE PERSONS ARE DESCRIBED THE UNDERSIGNED, WHOSE BY NAME AND OFFICIAL TITLE.

SIGNATURE: _____

PRINT NAME: _____

MY COMMISSION EXPIRES ON _____

MY PRESENT PLACE OF BUSINESS IS THE COUNTY OF _____

MAP OF MERGER AND RESUBDIVISION NO. EG-SC-904-PM-03 OF

LOTS 296-306, LINGERIE LARRY UNIT NO. 3 (303 B.M. 1)

CITY OF ELK GROVE, COUNTY OF SACRAMENTO, CALIFORNIA
 NOVEMBER, 2002 SCALE: 1"=60'
 MURRAY SMITH & ASSOCIATES
 SHEET 2 OF 2

CONTRACT LARRY UNIT 3
 303 B.M. 1



- LEGEND**
- - BOUNDARY POINT
 - X - POINT ADJACENT TO STREET
 - - POINT 1/4" FROM FACE OF STREET CENTERLINE
 - - POINT 1/4" FROM FACE OF STREET CENTERLINE AS SHOWN ON 200 B.M. 1

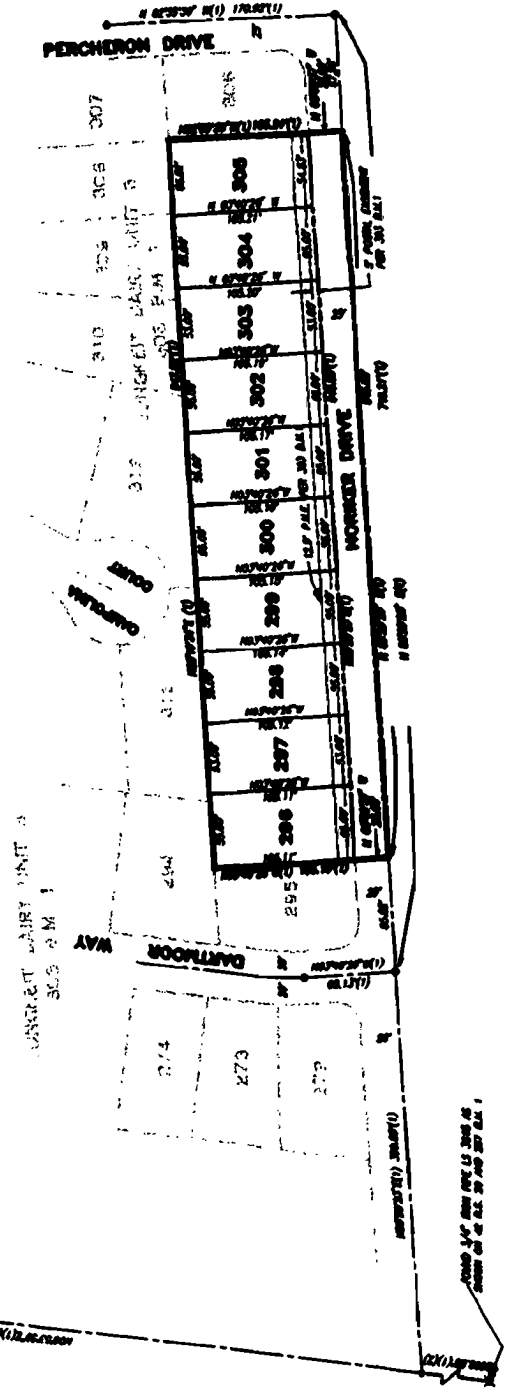
P.U.C. - PUBLIC UTILITY DISTRICT
 --- CENTERLINE
 B.M. - BACK OF CURB

- NOTES**
- (1) - SEE B.M. 1 (ADJACENT STREET CORNER NO. 3)
 - (2) - SEE B.M. 1 (ADJACENT STREET CORNER NO. 1)

STATE OF CALIFORNIA
 THE STATE OF CALIFORNIA AND THE CITY OF ELK GROVE, COUNTY OF SACRAMENTO, CALIFORNIA, HEREBY CERTIFY THAT THE MAP IS THE CORRECT COPY OF THE ORIGINAL RECORDING AS SUBMITTED TO THE COUNTY CLERK OF SACRAMENTO COUNTY, CALIFORNIA, FOR RECORDING AND THAT THE MAP IS TRUE AND CORRECT AS SHOWN ON THE ORIGINAL COPY OF RECORDING NO. EG-SC-904-PM-03 (2002 B.M. 1).

NOTES

- (1) THE MAP CORRECTS AN AREA OF LATER ADJACENT CORNER, MARK OF LINE.
- (2) A SMALL IMPROVEMENT FOR THE CORRECTED CORNER IS PROVIDED BY THE CITY OF ELK GROVE, COUNTY OF SACRAMENTO, CALIFORNIA. THE IMPROVEMENT IS SHOWN ON THE MAP AS A DOTTED LINE.
- (3) THE CITY OF ELK GROVE, COUNTY OF SACRAMENTO, CALIFORNIA, IS THE OWNER OF THE IMPROVEMENT.
- (4) THE CITY OF ELK GROVE, COUNTY OF SACRAMENTO, CALIFORNIA, IS THE OWNER OF THE IMPROVEMENT.
- (5) THE CITY OF ELK GROVE, COUNTY OF SACRAMENTO, CALIFORNIA, IS THE OWNER OF THE IMPROVEMENT.



CONTRACT LARRY UNIT 3
 303 B.M. 1