

RESOLUTION NO. 2024-074

A RESOLUTION OF THE CITY COUNCIL OF THE CITY OF ELK GROVE IDENTIFYING THE PROJECTS TO BE INCLUDED IN THE SB1 PROJECT LISTING TO RECEIVE FUNDING FROM THE ROAD MAINTENANCE AND REHABILITATION ACCOUNT (RMRA) FOR FISCAL YEAR 2024-25 AS REQUIRED BY THE ROAD REPAIR AND ACCOUNTABILITY ACT OF 2017 (SB1)

WHEREAS, Senate Bill 1 (SB 1), the Road Repair and Accountability Act of 2017 (Chapter 5, Statutes of 2017) was passed by the Legislature and signed into law by then Governor Brown in April 2017 to address the significant multi-modal transportation funding shortfalls statewide; and

WHEREAS, SB 1 includes accountability and transparency provisions that will ensure the residents of Elk Grove are aware of the projects proposed for funding in the community and which projects have been completed each fiscal year; and

WHEREAS, the City of Elk Grove (City) must adopt by resolution a list of projects proposed to receive fiscal year funding from the Road Maintenance and Rehabilitation Account (RMRA), created by SB 1, which must include a description and the location of each proposed project, a proposed schedule for the project's completion, and the estimated useful life of the improvement; and

WHEREAS, the City, will receive an estimated \$4,529,975 in RMRA funding in Fiscal Year 2024-25 from SB 1; and

WHEREAS, this is the eighth year in which the City is receiving SB 1 funding that will enable the City to continue essential road maintenance and rehabilitation projects, safety improvements, and increasing access and mobility options for the traveling public that would not have otherwise been possible; and

WHEREAS, the City has undergone a robust public process to ensure public input into the community's transportation priorities/project list; and

WHEREAS, the City used a pavement management system, Street Saver, to develop the SB 1 project list to ensure revenues are being used on the most high-priority and cost-effective projects that also meet the community's priorities for transportation investment; and

WHEREAS, the funding from SB 1 will help the City maintain and rehabilitate approximately 242 street segments throughout the City this year and 225 street segments for similar projects into the future; and

WHEREAS, the 2020 California Statewide Local Streets and Roads Needs Assessment found that the City's streets and roads are in a "very good" condition and this revenue will help the City maintain the overall quality of the road system, and over the next decade will help keep the City's streets and roads in very good condition; and

WHEREAS, the SB 1 project list and overall investment in local streets and roads infrastructure with a focus on basic maintenance and safety, investing in complete streets infrastructure, and using cutting-edge technology, materials and practices, will have significant positive benefits citywide.

NOW, THEREFORE, BE IT RESOLVED that the City Council of the City of Elk Grove hereby:

- 1) Finds the foregoing recitals are true and correct; and
- 2) Approves the following newly proposed projects to be funded in-part or solely with FY 2024-25 Road Maintenance and Rehabilitation Account revenues:

A. 2025 Pavement Slurry Seal and Resurfacing Project (WPR025):

- Improvements to be completed by this Project will likely include asphalt concrete repairs, crack sealing, slurry seal and cape seal treatments, as well as ADA improvements and miscellaneous concrete repairs associated with this work.
- A Street List is provided in Exhibit A, attached hereto and incorporated by reference.
- Staff anticipates that this Project will start construction in October of 2024 and be completed by October of 2025.
- The estimated useful life of all expected improvements is between five years (pavement seals) and 10 years (pavement patches and repairs).

- 3) The following previously proposed and adopted projects may also utilize FY 2024-25 Road Maintenance and Rehabilitation Account Revenues in their delivery. With relisting of these projects in the adopted fiscal year resolution, the City is reaffirming to the public and state its intent to fund these projects with Road Maintenance and Rehabilitation Account revenues.

A. Franklin Blvd. Cycle Track, Elk Grove Blvd to Laguna Blvd (WAM019):

- This Project will result the design and construction an extension of the existing one-way Class IV Bikeways on Franklin Blvd. This will provide a major north/south connection and significantly improve safety on a major roadway. It will connect trails in the southwest part of the City, such as Erhardt Trail and Franklin Creek Trail, to the Laguna Creek Trail and south Sacramento.
- A Project location map is provided in Exhibit B, attached hereto and incorporated by reference.
- Staff anticipates that this Project will start preliminary design in December 2024 and complete in November 2025, with construction starting in December 2025 and finishing by December 2026.
- The estimated useful life of all items identified is 15 to 20 years.

B. Second Eastbound Left Turn Lane on Elk Grove Blvd, at Auto Center Drive (WTR098):

- This Project will design and construct a second eastbound left turn lane on Elk Grove Blvd. to facilitate vehicles entering the Walmart Shopping Center at Auto Center Drive. This includes replacing the mast arm and supporting pole on the southeast corner with a longer mast arm.

- The Project location map is provided as Exhibit C, attached hereto and incorporated by reference.
- Staff anticipates this Project will start design in September 2025 and complete in August 2026, with construction starting in September 2026 and finishing in September 2027.
- The estimated useful life of all identified items is 20 years.

C. 2024 Pavement Slurry Seal and Resurfacing Project (WPR024):

- This Project includes asphalt concrete repairs, crack sealing, slurry and cape seal treatments, as well as ADA improvements and miscellaneous concrete repairs associated with this work.
- A Street List is provided in Exhibit D, attached hereto and incorporated by reference.
- This Project began construction in May of 2024 and all work is expected to be complete in October of 2024.
- The estimated useful life of all items identified is between five years (pavement seals) and 10 years (pavement patches and repairs).

D. Elk Grove Florin Complete Street and Resurfacing Project (WTR078):

- This Project, which will be the third phase of multi-modal and state-of-good-repair funding on this corridor, will include design and construction of pavement resurfacing, sidewalk gap closures, ADA curb ramp upgrades, the addition of new Class II and Class III bike lanes, upgrades to video detection, and pedestrian interval prioritization.
- A Project Location Map is provided in Exhibit E, attached hereto and incorporated by reference.
- This Project is currently in design with anticipated completion in September 2024. Construction is anticipated to begin in October 2024 and be complete in October 2025.
- The estimated useful life of all items identified is between 15 years and 20 years.

PASSED AND ADOPTED by the City Council of the City of Elk Grove this 22nd day of May 2024


 BOBBIE SINGH-ALLEN, MAYOR of the
 CITY OF ELK GROVE

ATTEST:


 JASON LINDGREN, CITY CLERK

APPROVED AS TO FORM:



 JONATHAN P. HOBBS,
 CITY ATTORNEY

Exhibit A Streets List for 2025 (WPR025)

Subzone	Street Name	Begin Location	End Location	Anticipated Treatment	Area (sf)	Maint. Zone
0	GRANT LINE RD	BRADSHAW RD	ELK GROVE BLVD	3" GRIND & OVERLAY	109104	3
0	LAGUNA BLVD	BRUCEVILLE RD	BIG HORN BLVD	R&R	137480	6
0	LAGUNA BLVD	BIG HORN BLVD	BRUCEVILLE RD	R&R	137480	6
0	LAGUNA BLVD	WEST STOCKTON BLVD	HWY 99	R&R	68150	6
0	LAGUNA BLVD	HWY 99	WEST STOCKTON BLVD	R&R	67550	6
0	LAGUNA BLVD	WEST STOCKTON BLVD	BIG HORN BLVD	R&R	96100	6
0	LAGUNA BLVD	BIG HORN BLVD	WEST STOCKTON BLVD	R&R	96100	6
26	LEAL CT	ROSELIN WAY	CDS-SOUTH END	TYPE II - SLURRY SEAL	5059	2
26	LEMONWOOD WAY	ROSELIN WAY	WILLOW VALE WAY	TYPE II - SLURRY SEAL	9256	2
26	MIDDLESBORO WAY	ST AUGUSTINE DR	SOUTH WALES WAY	TYPE II - SLURRY SEAL	26988	2
26	OAK MELLO CT	ST AUGUSTINE DR	CDS-SOUTH END	TYPE II - SLURRY SEAL	19099	2
26	ROSELIN WAY	FRANKLIN BLVD	LEMONWOOD WY	TYPE II - SLURRY SEAL	31850	2
26	S WALES WAY	ST AUGUSTINE DR	NORTH END	TYPE II - SLURRY SEAL	47632	2
26	SAINT AUGUSTINE DR	FRANKLIN BLVD	WORCESTER WY	TYPE II - SLURRY SEAL	74803	2
26	SEBRING CT	ST AUGUSTINE DR	CDS-EAST END	CAPE SEAL	8094	2
26	TURNBERRY CT	ST AUGUSTINE DR	CDS-WEST END	CAPE SEAL	11032	2
26	WORCESTER WAY	SOUTH WALES WY	ST AUGUSTINE DR	TYPE II - SLURRY SEAL	17940	2
47	ABRIGO WAY	MACHADO RANCH DR	RIO TAMEGA DR	TYPE II - SLURRY SEAL	4628	1
47	BEJA CT	GRACIOSA WAY	CDS	TYPE II - SLURRY SEAL	8710	1
47	BELEZA CT	RIO CAVADO WAY	CDS	TYPE II - SLURRY SEAL	7644	1
47	BOA NOVA DR	BILBY RD	BRUCEVILLE RD	TYPE II - MICROSURFACING	98964	1
47	BRAGA CT	CASTRO VERDE WAY	CDS	TYPE II - SLURRY SEAL	4550	1
47	CASTRO VERDE WAY	STATHOS DR	SAGRES WAY	TYPE II - SLURRY SEAL	57096	1
47	CASTRO VERDE WAY	SAGRES WAY	FRANK GREG WAY	TYPE II - SLURRY SEAL	44538	1
47	CHAVES CT	CASTRO VERDE WAY	CDS	TYPE II - SLURRY SEAL	7020	1
47	DESERTAS CT	PEDRA DO SOL WAY	CDS	TYPE II - SLURRY SEAL	7514	1
47	ESTRELA CT	RIO TAMEGA DR	CDS	TYPE II - SLURRY SEAL	4966	1
47	FRANK GREG WAY	FRANKLIN HIGH RD	CAST VERDE WAY	TYPE II - SLURRY SEAL	29588	1
47	GRACIOSA WAY	BOA NOVA DR	BOA NOVA DR	TYPE II - SLURRY SEAL	62894	1
47	MACHICO WAY	FRANKLIN HIGH RD	BOA NOVA DR	TYPE II - SLURRY SEAL	30082	1
47	MOURA CT	MACHICO WAY	CDS	TYPE II - SLURRY SEAL	2210	1
47	NOVATO CT	GRACIOSA WAY	CDS	TYPE II - SLURRY SEAL	6448	1
47	ODEMIRA WAY	RIO COVADO WY	BOA NOVA DR	TYPE II - SLURRY SEAL	14170	1
47	OVAR CT	GRACIOSA WY	CDS	TYPE II - SLURRY SEAL	6734	1
47	PAUL DO MAR WAY	GRACIOSA WY	OVAR CT	TYPE II - SLURRY SEAL	42562	1
47	PEDRA DO SOL CT	PEDRA DO SOL WAY	CDS	TYPE II - SLURRY SEAL	2704	1

Subzone	Street Name	Begin Location	End Location	Anticipated Treatment	Area (sf)	Maint. Zone
47	PEDRA DO SOL WAY	MACHADO RANCH DR	BOA NOVA DR	TYPE II - SLURRY SEAL	48880	1
47	PONTA DO SOL WAY	SAGRÉS WY	CASTRO VERDE WY	TYPE II - SLURRY SEAL	11908	1
47	RIO CAVADO WAY	GRACIOSA WAY	GRACIOSA WAY	TYPE II - SLURRY SEAL	31564	1
47	RIO DE ONAR WAY	CASTRO VERDE WAY	MACHICO WY	TYPE II - SLURRY SEAL	37232	1
47	RIO TAMEGA DR	FRANKLIN HIGH RD	RIO TAMEGA DR	TYPE II - SLURRY SEAL	64416	1
47	SAGRÉS WAY	CASTRO VERDE WY	RIO DE ONAR WY	TYPE II - SLURRY SEAL	24986	1
47	SANTO CT	GRACIOSA WY	CDS	TYPE II - SLURRY SEAL	3744	1
47	SERTA CT	GRACIOSA WY	CDS	TYPE II - SLURRY SEAL	6578	1
47	STATHOS DR	176' SE OF RIO TEJO WAY	BOA NOVA DR	TYPE II - MICROSURFACING	28400	1
47	TAVIRA CT	PEDRA DO SOL WAY	CDS	TYPE II - SLURRY SEAL	9230	1
47	VALENDÁ CT	RIO DE ONAR WY	CDS	TYPE II - SLURRY SEAL	5512	1
47	VIA CINTA CT	CASTRO VERDE WY	CDS	TYPE II - SLURRY SEAL	6448	1
47	VILA REAL WAY	FRANKLIN HIGH RD	CASTRO VERDE WY	TYPE II - SLURRY SEAL	10036	1
49	ABRIGO WAY	ELVORA WAY	MACHADO RANCH DR	TYPE II - SLURRY SEAL	6708	1
49	BARTOLOMEI CT	QUAIL RUN LN	CDS	TYPE II - SLURRY SEAL	4992	1
49	BRYAN CT	SCHULER RANCH RD	CDS	TYPE II - SLURRY SEAL	8105	1
49	ELVORA WAY	QUAIL RUN LN	PARADA CT	TYPE II - SLURRY SEAL	54990	1
49	FESTA CT	ELVORA WAY	CDS	TYPE II - SLURRY SEAL	8268	1
49	KUHN RANCH RD	QUAIL RUN LN	ELVORA WAY	TYPE II - SLURRY SEAL	21398	1
49	MACHADO RANCH DR	FRANKLIN HIGH RD	BRUCEVILLE RD	TYPE II - SLURRY SEAL	72710	1
49	PARADA CT	MACHADO RANCH DR	CDS	TYPE II - SLURRY SEAL	14742	1
49	POMBAL CT	ELVORA WAY	CDS	TYPE II - SLURRY SEAL	8164	1
49	QUAIL RUN LN	FRANKLIN HIGH RD	BRUCEVILLE RD	TYPE II - SLURRY SEAL	34,580	1
49	ROJELIO CT	QUAIL RUN LN	CDS	TYPE II - SLURRY SEAL	7,254	1
49	SALEWSKY CT	SCHULER RANCH RD	CDS	TYPE II - SLURRY SEAL	14,215	1
49	SANTAREM CT	ELVORA WAY	CDS	TYPE II - SLURRY SEAL	6,500	1
49	SCHULER RANCH RD	QUAIL RUN LN	WHITELOCK PKWY	TYPE II - SLURRY SEAL	44,070	1
49	TUZZA CT	QUAIL RUN LN	CDS	TYPE II - SLURRY SEAL	11,355	1
49	WEXTED WAY	SCHULER RANCH RD	QUAIL RUN LN	TYPE II - SLURRY SEAL	27,118	1
53	ARBORFIELD DR	SOARING OAKS DR	WYNNDÉL WAY	TYPE II - SLURRY SEAL	9,765	2
53	BOWMONT WAY	HENDON WAY	GALLATIN DR	TYPE II - SLURRY SEAL	51,974	2
53	BRANDAMORE CT	BOWMONT WAY	CDS-EAST END	TYPE II - SLURRY SEAL	18,059	2
53	CARRCROFT DR	HENDON WAY	SOARING OAKS DR	CAPE SEAL	10,836	2
53	CORWIN CT	HENDON WAY	CDS-NORTH END	CAPE SEAL	6,025	2
53	DELBURNS CT	WYNNDÉL WAY	CDS-SOUTH END	CAPE SEAL	10,185	2
53	DENHOLM CT	WYNNDÉL WAY	CDS-SOUTH END	TYPE II - SLURRY SEAL	15,697	2

Subzone	Street Name	Begin Location	End Location	Anticipated Treatment	Area (sf)	Maint. Zone
53	DUNBLANE WAY	WYNDEL WAY	SOARING OAKS DR	TYPE II - SLURRY SEAL	13,332	2
53	ESMONT CT	WYNDEL WAY	CDS-SOUTH END	TYPE II - SLURRY SEAL	5,167	2
53	FAIRLIGHT CT	WYNDEL WAY	CDS-NORTH END	TYPE II - MICROSURFACING	15,151	2
53	GALLATIN DR	SOARING OAKS DR	BOWMONT WAY	TYPE II - MICROSURFACING	8,864	2
53	HENDON WAY	BOWMONT WAY	GALLATIN DR	CAPE SEAL	33,150	2
53	RIFTON CT	BOWMONT WY	CDS-SOUTH END	CAPE SEAL	5,657	2
53	RYLAND CT	BOWMONT WY	CDS-WEST END	CAPE SEAL	15,589	2
53	WILLSALL CT	BOWMONT WY	CDS-EAST END	TYPE II - SLURRY SEAL	9,895	2
53	WYNDEL WAY	DUNBLANE WY (SOUTH)	DUNBLANE WY (NORTH)	TYPE II - MICROSURFACING	75,608	2
62	DIRUSSO CIR	DENALI CIR	DENALI CIR	TYPE II - MICROSURFACING	35,230	5
62	ELSTON CIR	DENALI CIR	DENALI CIR	TYPE II - MICROSURFACING	39,000	5
62	JOEBAR CIR	DENALI CIR	DENALI CIR	TYPE II - MICROSURFACING	29,068	5
62	PARTINGTON CIR	DENALI CIR	DENALI CIR	TYPE II - MICROSURFACING	38,636	5
62	DENALI CIR	BIG HORN BLVD	BIG HORN BLVD	TYPE II - MICROSURFACING	146,592	5
65	W STOCKTON BLVD	WHITELOCK PKWY	2936' N/W WHITELOCK PKWY	TYPE II - SLURRY SEAL	59,220	5
65	CAPE VERDE DRIVE	WHITELOCK PARKWAY	PONTA DELGADA DRIVE	TYPE II - SLURRY SEAL	34,100	5
65	PENELA WY	SERRA ESTRELA DR	RIA FORMOSA WY	TYPE II - SLURRY SEAL	17,160	5
65	ALFAMA WAY	PONTA DELGADA DR	LOUSADA DR	TYPE II - SLURRY SEAL	32,301	5
65	AMARES CIR	LOUSADA DR	LOUSADA DR	TYPE II - SLURRY SEAL	43,602	5
65	ARCOS WAY	SINTRA WAY	NELAS WAY	TYPE II - SLURRY SEAL	5,481	5
65	ARRABIDA CT	SINTRA WAY	ARRABIDA CT	TYPE II - SLURRY SEAL	1,784	5
65	ATRIO CIR	PONTA DELGADA DR	SERRA ESTRELA DR	TYPE II - SLURRY SEAL	35,856	5
65	CALHAY WAY	VILA GALE WAY	CARICO WAY	TYPE II - SLURRY SEAL	21,450	5
65	CALHETA WAY	PORTO BAY DR	PORTO BAY DR	TYPE II - SLURRY SEAL	52,530	5
65	CAMILLA CT	SINTRA WAY	CDS	TYPE II - SLURRY SEAL	5,486	5
65	CARCAVELOS WAY	CARICO WAY	CAPE VERDE	TYPE II - SLURRY SEAL	12,375	5
65	CARICO WAY	CAPE VERDE DRIVE	PONTA DELGADA DRIVE	TYPE II - SLURRY SEAL	31,980	5
65	CARICO WAY	PONTA DELGADA DRIVE	CALHAY WAY	TYPE II - SLURRY SEAL	18,450	5
65	CARICO WAY	CALHAY WAY	TROPICAL WAY	TYPE II - SLURRY SEAL	12,600	5
65	CARICO WAY	TROPICAL WAY	PORTO BAY DRIVE	TYPE II - SLURRY SEAL	26,250	5
65	GREAT SKUA WAY	PONTA DELGADA DR	CARICO WAY	TYPE II - SLURRY SEAL	14,300	5
65	LOUSADA DR	POINTE DELGADA DR	SERRA ESTRELA DR	TYPE II - SLURRY SEAL	17,120	5
65	LOUSADA DR	WHITELOCK PKWY	POINTE DELGADA DR	TYPE II - SLURRY SEAL	23,680	5
65	MIRANDELA WY	SINTRA WAY	VIZELA WAY	TYPE II - SLURRY SEAL	12,142	5
65	NELAS WY	PONTA DELGANDA DR	MIRANDELA WY	TYPE II - SLURRY SEAL	18,486	5
65	PENELA WY	SERRA ESTRELA DR	RIA FORMOSA WY	TYPE II - SLURRY SEAL	16,744	5

Subzone	Street Name	Begin Location	End Location	Anticipated Treatment	Area (sf)	Maint. Zone
65	PENELA WY	POINTE DELGADA DR	SERRA ESTRELA DR	TYPE II - SLURRY SEAL	19,812	5
65	PENELA WY	VIZELA	PONTA DELGADA DRIVE	TYPE II - SLURRY SEAL	23,816	5
65	PONTA DELGADA DR	CARICO WAY	LOTZ PKWY	TYPE II - SLURRY SEAL	94,240	5
65	PORTO BAY DR	LOTZ PKWY	ATRIO CIR	TYPE II - SLURRY SEAL	19,260	5
65	PORTO BAY DR	LOTZ PKWY	ATRIO CIR	TYPE II - SLURRY SEAL	19,260	5
65	RIA FORMOSA WY	SERRA ESTRELLA DR	PENELA WY	TYPE II - SLURRY SEAL	30,160	5
65	RIA FORMOSA WY	PENELA WY	SERRA ESTRELA	TYPE II - SLURRY SEAL	7,020	5
65	SAO VICENTE WAY	CALHETA WAY	CAPE VERDE DR	TYPE II - SLURRY SEAL	7,800	5
65	SERRA ESTRELA DR	LOTZ PKWY	ATRIO CIR	TYPE II - SLURRY SEAL	16,960	5
65	SERRA ESTRELA DR	LOTZ PKWY	ATRIO CIR	TYPE II - SLURRY SEAL	16,960	5
65	SINTRA WAY	POINTE DELGADA DR	SERRA ESTRELA DR	TYPE II - SLURRY SEAL	25,402	5
65	SINTRA WAY	POINTE DELGADA DR	VIZELA WAY	TYPE II - SLURRY SEAL	23,894	5
65	STORM PETREL CT	CARCAVELOS WY	CDS	TYPE II - SLURRY SEAL	4,160	5
65	TROPICAL WAY	CARICO WY	PORTO BAY DR	TYPE II - SLURRY SEAL	17,550	5
65	VILA GALE WAY	CARICO WAY	CALHAY WAY	TYPE II - SLURRY SEAL	13,650	5
65	VILA GALE WAY	CALHAY WAY	PORTO BAY DR	TYPE II - SLURRY SEAL	4,810	5
65	VIONNET WAY	SINTRA WAY	VIZELA WAY	TYPE II - SLURRY SEAL	9,308	5
65	VIZELA WY	LOUSADA DR	SINTRA WY	TYPE II - SLURRY SEAL	13,130	5
65	VIZELA WY	SINTRA WY	MIRANDELA WY	TYPE II - SLURRY SEAL	29,770	5
65	VIZELA WY	MIRANDELA WY	PONTA DELGADA DRIVE	TYPE II - SLURRY SEAL	20,748	5
65	VIZELA WY	PONTA DELGADA DR	SINTRA WY	TYPE II - SLURRY SEAL	23,504	5
65	CAPE VERDE DRIVE	PONTA DELGADA DRIVE	NORTH END OF ROAD	TYPE II - SLURRY SEAL	32,395	5
65	LOTZ PKWY	LAGUNA SPRING DR	WHITELOCK PKWY	TYPE II - SLURRY SEAL	332,772	5
65	BOLCETTO CIR	CAPE VERDE DR (S)	CAPE VERDE DR (N)	TYPE II - SLURRY SEAL	40,794	5
65	CARAMBOLA WAY	CAPE VERDE DR	POINTA DELGADA DR	TYPE II - SLURRY SEAL	23,504	5
78	AMETHYST WAY	HALVERSON DR	ELK WAY	TYPE II - SLURRY SEAL	16,120	3
78	ARGUS CT	EGRET DR	CDS - END	TYPE II - SLURRY SEAL	11,205	3
78	BARTH ST	HALVERSON DR	ELK WAY	TYPE II - SLURRY SEAL	20,150	3
78	CATFISH CT	LAMPREY DR	CDS	TYPE II - SLURRY SEAL	4,498	3
78	CELITO CT	LOS BANOS WAY	SOUTH END	CAPE SEAL	3,094	3
78	CRUCERO DR	TERRA LINDA DR	EAST END	TYPE II - SLURRY SEAL	24,726	3
78	DINUBA CT	TERRA LINDA DR	CDS - WEST END	CAPE SEAL	7,739	3
78	EGRET DR	BOND RD	LUJAN DR	TYPE II - SLURRY SEAL	61,050	3
78	EL TOREADOR WAY	LOS BANOS WAY	LOS TORRES DR	TYPE II - SLURRY SEAL	38,740	3
78	ELK WAY	ELK GROVE FLORIN RD	LUJAN DR (WEST INTERSECTION)	TYPE II - SLURRY SEAL	155,700	3
78	EMILY ST	HALVERSON DR	KELSEY DR	TYPE II - SLURRY SEAL	37,100	3

Subzone	Street Name	Begin Location	End Location	Anticipated Treatment	Area (sf)	Maint. Zone
78	GARNET CREST CT	EMERALD CREST DR	CDS - EAST END	TYPE II - SLURRY SEAL	12,265	3
78	GARNET CT	AMETHYST WAY	EAST END	TYPE II - SLURRY SEAL	5,616	3
78	GEM CREST WAY	EMERALD CREST DR	EMERALD VISTA DR	TYPE II - SLURRY SEAL	22,724	3
78	HALVERSON DR	TERRA LINDA DR	ELK GROVE FLORIN RD	TYPE II - SLURRY SEAL	79,200	3
78	HUMMINGBIRD WAY	EGRET DR	LOS TORRES DR	CAPE SEAL	14,950	3
78	JADE CREST CT	EMERALD CREST DR	EAST END	TYPE II - SLURRY SEAL	12,427	3
78	KIWI CIR	EGRET DR	EGRET DR	TYPE II - SLURRY SEAL	23,712	3
78	LAMPREY DR	TROUT WAY	ELF GROVE FLORIN RD	TYPE II - SLURRY SEAL	47,658	3
78	LOS BANOS WAY	BOND RD	EL TOREADOR WAY	CAPE SEAL	41,106	3
78	LOS TORRES DR	EL TOREADOR WAY	LUJAN DR	TYPE II - SLURRY SEAL	37,950	3
78	LOS TORRES DR	LUJAN DR	ELK WAY	TYPE II - SLURRY SEAL	24,030	3
78	LUJAN DR	EMERALD VISTA DR	KELSEY DR	CAPE SEAL	115,038	3
78	MARK ST	HALVERSON DR	ELK WAY	TYPE II - SLURRY SEAL	27,118	3
78	MONTEGO CT	LUJAN DR	CDS - WEST END	TYPE II - SLURRY SEAL	6,742	3
78	MOYNELLO CT	HALVERSON DR	SOUTH END	TYPE II - SLURRY SEAL	13,312	3
78	RUBY CREST CT	EMERALD CREST DR	EAST END	TYPE II - SLURRY SEAL	12,505	3
78	SANGRIA CT	TERRA LINDA DR	CDS - WEST END	CAPE SEAL	7,808	3
78	SHINER CT	TROUT WY	CDS	TYPE II - SLURRY SEAL	5,200	3
78	SUMERLIN CT	ELK WY	EAST END	TYPE II - SLURRY SEAL	10,374	3
78	TERRA LINDA DR	BOND RD	LUJAN DR	CAPE SEAL	65,009	3
78	TERRA LINDA DR	LUJAN DR	ELK WY	TYPE II - SLURRY SEAL	33,041	3
78	TORREY WAY	EL TOREADOR WY	TERRA LINDA DR	TYPE II - SLURRY SEAL	9,646	3
78	TROUT CT	TROUT WY	CDS	TYPE II - SLURRY SEAL	3,016	3
78	TROUT WAY	BOND RD	LAMPREY DR	TYPE II - SLURRY SEAL	45,812	3
78	TULARE CT	LOS TORRES DR	CDS - EAST END	TYPE II - SLURRY SEAL	7,791	3
78	VIA CT	TERRA LINDA DR	WEST END	TYPE II - SLURRY SEAL	6,148	3
78	WREN CIR	EGRET DR	EGRET DR	CAPE SEAL	29,718	3
82	ALAMEDA PARK DR	CALVINE RD	BROWN RD	TYPE II - SLURRY SEAL	51,948	3
82	ARBORWOOD CT	LAKEMONT DR	CDS	TYPE II - SLURRY SEAL	7,773	3
82	BALBOA PARK WAY	ALAMEDA PARK DR	LAKEMONT DR	TYPE II - SLURRY SEAL	28,834	3
82	BANYON TREE CT	BROWN RD	CDS	TYPE II - SLURRY SEAL	13,649	3
82	BRISTOL PLAZA WAY	HERITAGE HILL DR	LAKEMONT DR	TYPE II - SLURRY SEAL	26,078	3
82	BROWN RD	PATINA WAY	WATERMAN RD	TYPE II - SLURRY SEAL	107,712	3
82	BROWN RD	ELK GROVE FLORIN RD	EAST END	TYPE II - SLURRY SEAL	39,879	3
82	BROWN RD	FOUR SEASONS DR	PATINA WY	TYPE II - SLURRY SEAL	21,465	3
82	CALYPSO CT	LAKEMONT DR	CDS	TYPE II - SLURRY SEAL	7,877	3

Subzone	Street Name	Begin Location	End Location	Anticipated Treatment	Area (sf)	Maint. Zone
82	CAMINO VISTA WAY	LAKEMONT DR	BROWN RD	CAPE SEAL	24,700	3
82	CAMPOBELLO CT	CAMINO VISTA WAY	CDS	CAPE SEAL	9,359	3
82	CHANDLER HILL CT	ALAMEDA PARK DR	CDS	CAPE SEAL	11,023	3
82	COLD WATER CT	LAKEMONT DR	CDS	TYPE II - SLURRY SEAL	8,137	3
82	CROSSCOURT WAY	ALAMEDA PARK DR	LAKEMONT DR	TYPE II - SLURRY SEAL	41,054	3
82	CYPRESS BLUFF CT	LAKEMONT DR	CDS	TYPE II - SLURRY SEAL	7,637	3
82	DEVON CREST WAY	HERITAGE HILL DR	BROWN RD	CAPE SEAL	28,288	3
82	ECHO RIDGE CT	HERITAGE HILL DR	CDS	CAPE SEAL	10,633	3
82	HERITAGE HILL DR	BROWN RD	CALVINE RD	TYPE II - SLURRY SEAL	62,524	3
82	LAKEMONT DR	MERRY HILL WAY	CRIMSON CLOVER DR	TYPE II - MICROSURFACING	18,657	3
82	LAKEMONT DR	CRIMSOM CLOVER DR	CROSSCOURT WAY	TYPE II - MICROSURFACING	112,420	3
82	LAS CASITAS CT	LAKEMONT DR	CDS	CAPE SEAL	10,757	3
82	LUKEN CT	MERRY HILL WAY	END	CAPE SEAL	3,978	3
82	MERRY HILL WAY	CALVINE RD	S END	TYPE II - SLURRY SEAL	35,905	3
82	MORGAN POINT CT	CAMINO VISTA WAY	CDS	CAPE SEAL	12,421	3
82	PATINA WAY	BROWN RD	LAKEMONT DR	TYPE II - SLURRY SEAL	17,186	3
82	PIAZZA CT	PATINA WAY	CDS	TYPE II - SLURRY SEAL	5,018	3
82	ROYAL HEIGHTS CT	CAMINO VISTA WAY	CDS	CAPE SEAL	8,391	3
82	SERAFINO CT	LAKEMONT DRIVE	CDS	CAPE SEAL	7,851	3
82	TERRACOTTA CIR	LAKEMONT DR	END	TYPE II - SLURRY SEAL	30,160	3
82	TERRACOTTA CT	LAKEMONT DR	CDS	TYPE II - SLURRY SEAL	3,666	3
98	ANTON OAKS WAY	BOVILL DR	BLACK SWAN DR	TYPE II - MICROSURFACING	18,668	3
98	APPLE MILL DR	WEST END	BLACK SWAN DR	TYPE II - SLURRY SEAL	12,684	3
98	APPLE MILL DR	BLACK SWAN DR	BOVILL DR	TYPE II - SLURRY SEAL	41,034	3
98	ASHSTONE WAY	MAINLINE DR	BOVILL DR	TYPE II - SLURRY SEAL	44,642	3
98	BELDON GROVE CT	RED SPRUCE WAY	CDS	TYPE II - SLURRY SEAL	9,067	3
98	BLUE DIAMOND WAY	BLACK SWAN DR	RODELL WAY	TYPE II - SLURRY SEAL	37,102	3
98	BLACK SWAN DR	MAINLINE DR	VIRIDIAN WAY	TYPE II - SLURRY SEAL	45,600	3
98	BLACK SWAN DR	VIRIDIAN WAY	ELK GROVE BLVD	TYPE II - SLURRY SEAL	51,696	3
98	CALYX CT	RED SPRUCE WAY	CDS	TYPE II - SLURRY SEAL	5,506	3
98	CHANNEL ISLANDS ST	TWO HARBORS DR	LITTLE HARBOR WAY	TYPE II - SLURRY SEAL	8,476	3
98	CHIMES HARBOR DR	TWO HARBORS DR	LITTLE HARBOR WAY	TYPE II - MICROSURFACING	10,140	3
98	COPPER LAKE CT	APPLE MILL DR	CDS	TYPE II - SLURRY SEAL	3,926	3
98	DUBLIN BAY CT	BOVILL DR	CDS	TYPE II - SLURRY SEAL	7,399	3
98	DYNASTY WAY	BLUE DIAMOND WAY	RED SPRUCE WAY	TYPE II - SLURRY SEAL	20,540	3
98	FLAME TOKAY WAY	BLACK SWAN DR	BOVILL DR	TYPE II - MICROSURFACING	13,754	3

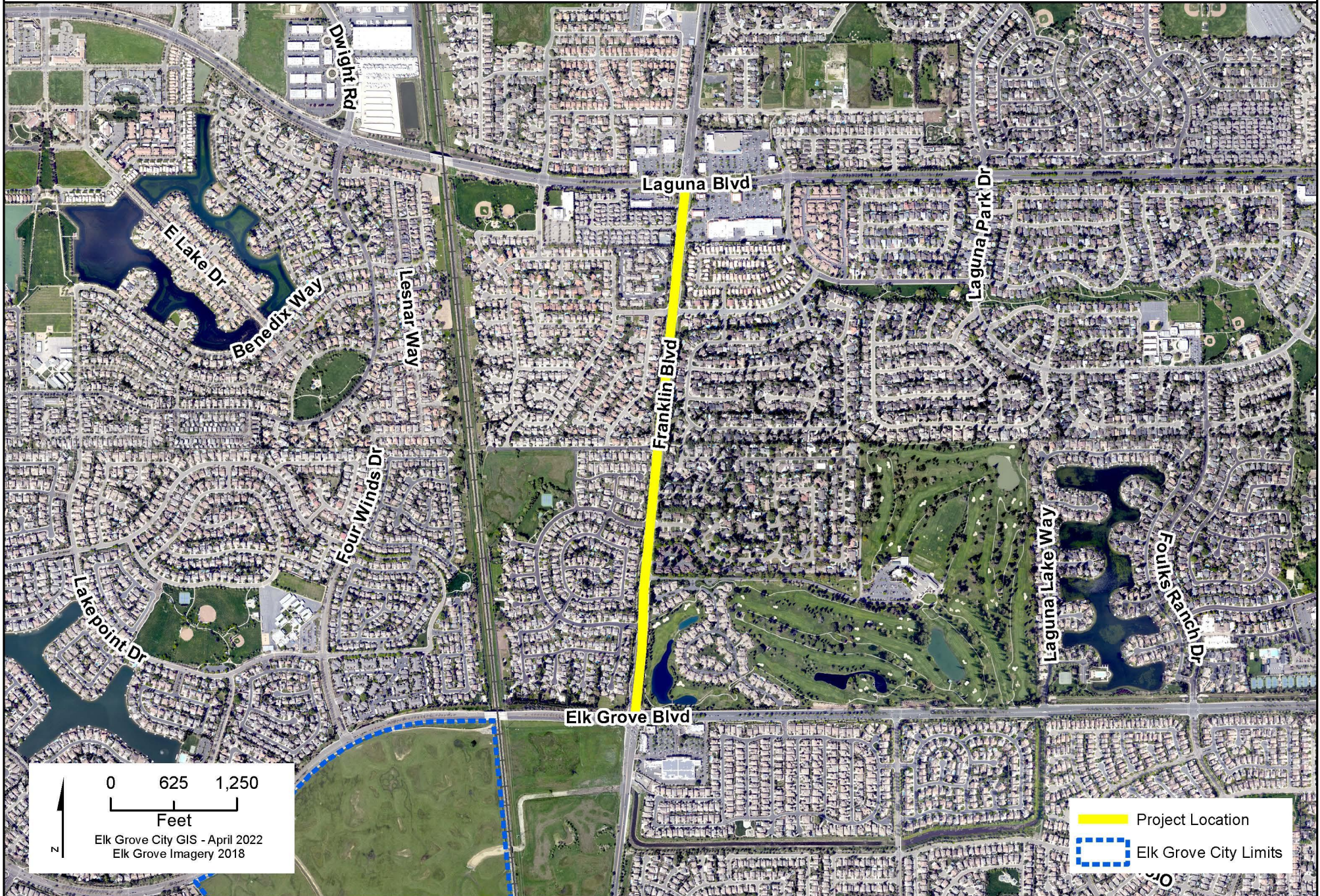
Subzone	Street Name	Begin Location	End Location	Anticipated Treatment	Area (sf)	Maint. Zone
98	GOLDEN PLOVER WAY	RED SPRUCE WAY	ASHSTONE WAY	TYPE II - SLURRY SEAL	23,348	3
98	HEADLEY WAY	SURRIT WAY	BOVILL DR	TYPE II - SLURRY SEAL	7,566	3
98	HEATHER GATE WAY	BLACK SWAN DR	BOVILL DR	TYPE II - SLURRY SEAL	8,164	3
98	LILAC FIELDS PL	MAINLINE DR	NORTH END	TYPE II - SLURRY SEAL	9,717	3
98	LITTLE HARBOR CT	SILVER HARBOR WAY	CDS	TYPE II - SLURRY SEAL	7,375	3
98	LITTLE HARBOR WAY	SILVER HARBOR WAY	CHANNEL ISLANDS ST	TYPE II - SLURRY SEAL	30,394	3
98	MAINLINE DR	WATERMAN RD	SURRITT WAY	TYPE II - MICROSURFACING	130,340	3
98	MAINLINE DR	SURRIT WAY	58' W BOVILL DR	TYPE II - SLURRY SEAL	10,032	3
98	ONYX PARK PL	MAINLINE DR	CDS	TYPE II - SLURRY SEAL	9,613	3
98	ORPINGTON PL	BLUE DIAMOND WAY	CDS	TYPE II - MICROSURFACING	6,343	3
98	PARSONS LANDING ST	WATERMAN RD	TWO HARBORS DR	TYPE II - MICROSURFACING	24,444	3
98	RED SPRUCE WAY	BLACK SWAN DR	BOVILL DR	TYPE II - SLURRY SEAL	43,940	3
98	ROCKWALL PL	GOLDEN PLOVER WAY	CDS - SOUTH END	CAPE SEAL	4,933	3
98	ROEDEL CT	SURRITT WY	CDS	TYPE II - SLURRY SEAL	7,279	3
98	ROEDEL WAY	MAINLINE DR	SURRITT WY	TYPE II - SLURRY SEAL	15,210	3
98	SEABURY CT	SURRITT WY	CDS	TYPE II - SLURRY SEAL	5,251	3
98	SILVER HARBOR WAY	WATERMAN RD	TWO HARBORS DR	TYPE II - SLURRY SEAL	16,198	3
98	SURRITT WAY	ROEDEL WY	MAINLINE DR	TYPE II - SLURRY SEAL	22,464	3
98	TOYON BAY CT	SILVER HARBOR WY	CDS	TYPE II - SLURRY SEAL	7,195	3
98	TWO HARBORS CT	SILVER HARBOR WAY	CDS	TYPE II - SLURRY SEAL	7,123	3
98	TWO HARBORS DR	SILVER HARBOR WY	CHANNEL ISLANDS ST	TYPE II - SLURRY SEAL	30,784	3
98	VIRIDIAN WAY	BLACK SWAN DR	ASHTONE WAY	TYPE II - SLURRY SEAL	20,540	3
98	WHITE PINE WAY	BLUE DIAMOND WAY	RED SPRUCE WAY	TYPE II - SLURRY SEAL	16,562	3
98	WHITES LANDING CT	TWO HARBORS DR	CDS	TYPE II - SLURRY SEAL	5,789	3
101	JETMAR WAY	GRANT LINE RD	WEST END	TYPE II - SLURRY SEAL	99,050	3



Franklin Blvd Cycle Track Elk Grove Blvd to Laguna Blvd - WAM019

Project Location Map

EXHIBIT B



Second EB Left Turn Lane on Elk Grove Blvd/Auto Center Dr - WTR098

Project Location Map

EXHIBIT C

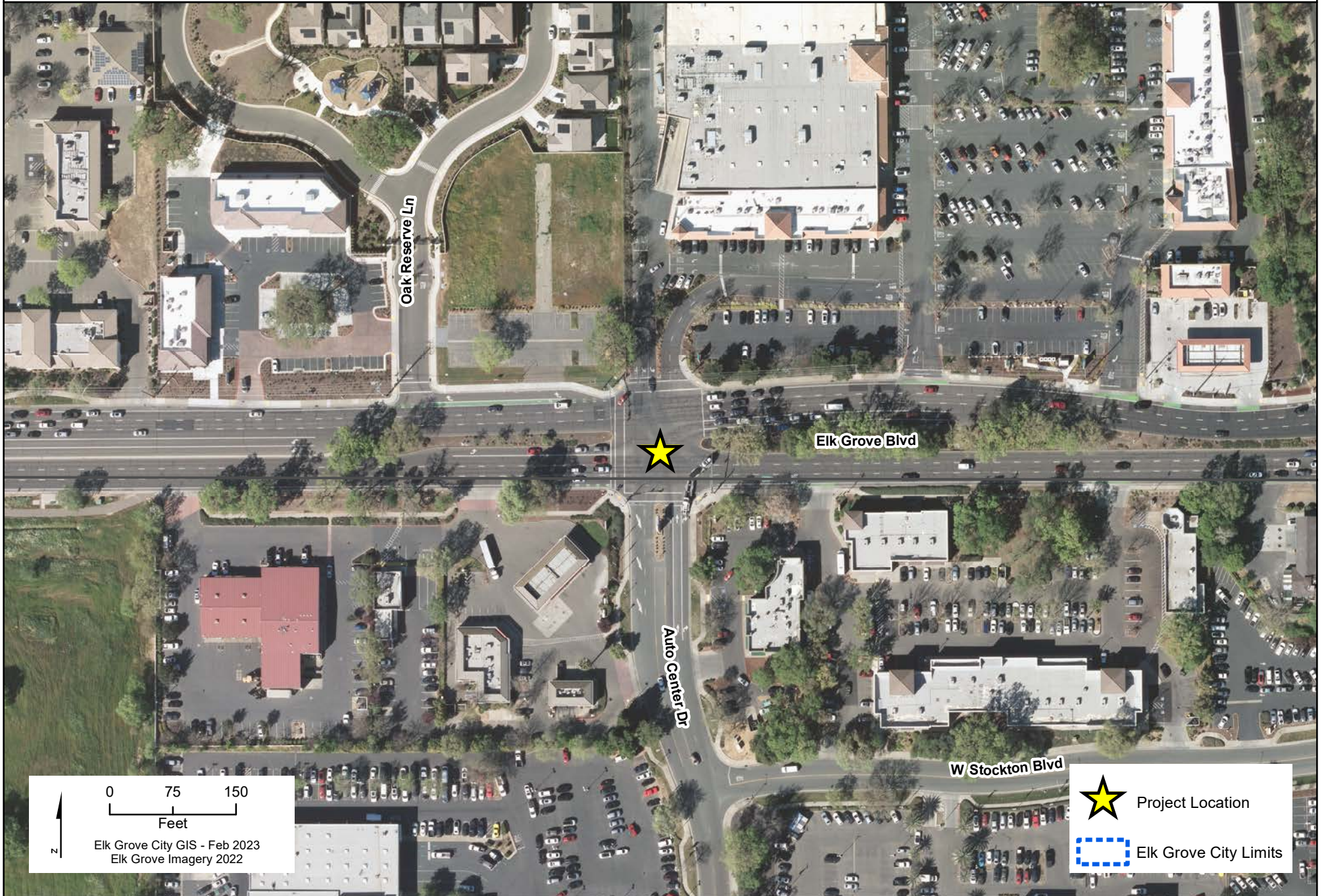


Exhibit D WPR024 Project Location List

Subzone	Street Name	Begin Location	End Location	Anticipated Treatment	Area (sf)	Maint. Zone
0	WHITELOCK PKWY	BRUCEVILLE RD	BELLATERRA DR (E)	TYPE II - MICROSURFACING	71,280	0
0	WHITELOCK PKWY	BOLSSOM RIDGE DR	FRANKLIN BLVD	TYPE II - MICROSURFACING	108,216	0
0	WHITELOCK PKWY	BELLATERRA RD (E)	BLOSSOM RIDGE DR	TYPE II - MICROSURFACING	146,232	0
32	AZTECA CT	BRABANT WAY	CDS	TYPE II - MICROSURFACING	8339	4
32	AZTECA WAY	PERCHERON DR	BRABANT WAY	TYPE II - MICROSURFACING	6682	4
32	BASHKIR CT	BRABANT WAY	CDS	CAPE SEAL	5200	4
32	BRABANT CT	BRABANT WAY	CDS	TYPE II - SLURRY SEAL	10781	4
32	BRABANT WAY	AZTECA WAY	CDS	TYPE II - SLURRY SEAL	52130	4
32	BURBERRY CT	IRIS MEADOW WAY	W CDS	TYPE II - SLURRY SEAL	7553	4
32	CLEVELAND BAY WAY	IRIS MEADOW WAY	WELSH WAY	TYPE II - SLURRY SEAL	25610	4
32	FALABELLA WAY	BRABANT WAY	SORRENA WAY	TYPE II - SLURRY SEAL	14040	4
32	FOX TROTTER WAY	BRABANT WAY	FIRE POPPY DR	TYPE II - SLURRY SEAL	46930	4
32	FRIESIAN WAY	IRIS MEADOW WAY	FIRE POPPY DR	TYPE II - SLURRY SEAL	16328	4
32	IRIS MEADOW WAY	FIRE POPPY DR	BLOSSOM RANCH DR	TYPE II - SLURRY SEAL	74275	4
32	LIPPIZAN CT	WESTFALEN WAY	CDS	TYPE II - SLURRY SEAL	9587	4
32	NORIKER DR	PERCHERON DR	BRABANT WAY	TYPE II - SLURRY SEAL	9324	4
32	PASO FINO WAY	WESTFALLEN WY	FOX TROTTER WY	TYPE II - SLURRY SEAL	44876	4
32	PETERS RANCH WAY	BLOSSOM RANCH DR	IRIS MEADOW WAY	TYPE II - SLURRY SEAL	23400	4
32	SORRENA WAY	FOX TROTTER WY	WESTFALLEN WY	TYPE II - SLURRY SEAL	12324	4
32	TERSK WAY	IRIS MEADOW WY	FIRE POPPY DR	TYPE II - SLURRY SEAL	16068	4
32	WELSH WAY	BRABANT WY	CLEVELAND BAY WY	TYPE II - MICROSURFACING	26962	4
32	WESTFALEN WAY	PERCHERON DR	FOX TROTTER WY	TYPE II - SLURRY SEAL	44720	4
32	WOOD LILY WAY	BLOSSOM RANCH DR	BRABANT WY	TYPE II - SLURRY SEAL	18590	4
43	FRANKLIN HIGH RD	WHITELOCK PRKY	MCLEAN	TYPE II - MICROSURFACING	83,388	4
46	FRANKLIN HIGH RD	MCLEAN	STATHOS (W)	TYPE II - MICROSURFACING	102,813	4
48	BRANCA WAY	VESPAS WAY	SAO TIAGO WAY	TYPE II - SLURRY SEAL	13,988	1
48	CAMACHA WAY	PORTO MONIZ WAY	SAO TIAGO WAY	TYPE II - SLURRY SEAL	30,316	1
48	FRANKLIN HIGH RD	STATHOS DR (W)	QUAIL RUN LN	TYPE II - MICROSURFACING	207,690	1
48	FUNCHAL CT	PORTO MONIZ WAY	CDS	TYPE II - SLURRY SEAL	1,898	1
48	FUTURO CT	VILAMOURA WAY	CDS	TYPE II - SLURRY SEAL	4,238	1
48	PASSARO WAY	VILAMOURA WAY	VILAMOURA WAY	TYPE II - SLURRY SEAL	15,886	1
48	PATTI WAY	PORTO MONIZ WAY	100' W OF PORTO MONIZ W	TYPE II - SLURRY SEAL	2,600	1
48	PORTO MONIZ WAY	VILAMOURA WAY	FRANKLIN HIGH RD	TYPE II - SLURRY SEAL	45,422	1
48	RIO TEJO	PORTO MONIZ WAY	FRANKLIN HIGH RD	TYPE II - SLURRY SEAL	48,516	1
48	RIQUEZA CT	SAO TIAGO WAY	CDS	TYPE II - SLURRY SEAL	7,280	1
48	SALVATERRA WAY	VILAMOURA WAY	VILAMOURA WAY	TYPE II - SLURRY SEAL	33,696	1
48	SAO TIAGO WAY	PORTO MONIZ WAY	VILAMOURA WAY	TYPE II - SLURRY SEAL	46,670	1
48	STATHOS DR	143' E/OF FRANK GREG WA	176' SE/OF RIO TEJO WAY	TYPE II - SLURRY SEAL	56,280	1
48	VESPAS WAY	VILAMOURA WAY	STATHOS DR	TYPE II - SLURRY SEAL	14,664	1
48	VILAMOURA WAY	FRANKLIN HIGH RD	FRANKLIN HIGH RD	TYPE II - SLURRY SEAL	81,345	1
49	FRANKLIN HIGH RD	QUAIL RUN LN	WHITELOCK PKWY	TYPE II - MICROSURFACING	34,970	4
55	AMON CT	DREYFUS WAY	CDS	TYPE II - SLURRY SEAL	7,800	2
55	BALDUR CT	MEDSTEAD WAY	CDS-EAST END	TYPE II - SLURRY SEAL	9,379	2
55	BONNY DOWNS WAY	RANFURLY DR	CAULFIELD DR	TYPE II - MICROSURFACING	17,446	2
55	BRIDGEBURN CT	RAVENDALE DR	CDS-WEST END	TYPE II - SLURRY SEAL	15,775	2
55	BROOKINGS CT	CAULFIELD DR	CDS-WEST END	TYPE II - MICROSURFACING	6,311	2
55	CAULFIELD DR	TRENHOLM DR	RAVENDALE DR	TYPE II - SLURRY SEAL	40,020	2
55	DREYFUS WAY	WYMARK DR	AMON CT	TYPE II - SLURRY SEAL	6,630	2
55	EDENDALE CT	RANFURLY DR	CDS-NORTH END	TYPE II - MICROSURFACING	7,815	2
55	FANGIO CT	DREYFUS WAY	CDS	TYPE II - MICROSURFACING	6,545	2
55	FARAWAY PL	BONNY DOWNS WAY	CDS-EAST END	TYPE II - SLURRY SEAL	17,643	2
55	FLINTOFT CT	WADENA WAY	CDS-SOUTH END	TYPE II - MICROSURFACING	5,037	2
55	GLADMAR CT	WADENA WAY	CDS-WEST END	TYPE II - SLURRY SEAL	8,183	2
55	GLENAYLE PL	BONNY DOWNS WAY	CDS-NORTH END	CAPE SEAL	9,895	2
55	INSTOW CT	MEDSTEAD WAY	CDS - SOUTH END	TYPE II - SLURRY SEAL	5,141	2
55	LITTLE RAPIDS WAY	RED ELK DR	VILLAGE TREE DR	TYPE II - SLURRY SEAL	32,396	2
55	MEDSTEAD WAY	MELFORT WAY	WADENA WAY	TYPE II - SLURRY SEAL	17,186	2
55	MELFORT WAY	SOARING OAKS DR	WADENA WAY	TYPE II - SLURRY SEAL	29,640	2
55	MONETTA DR	CRYSTAL WALK CIR	BIG HORN BLVD	TYPE II - SLURRY SEAL	10,248	2
55	QUESNEL CIR	MELFORT WY (NORTH)	MELFORT WY (SOUTH)	TYPE II - SLURRY SEAL	32,770	2
55	RANFURLY DR	TRENHOLM DR	BONNY DOWNS WY	TYPE II - SLURRY SEAL	11,264	2
55	RAVENDALE DR	CAULFIELD DR	TRENHOLM DR	TYPE II - SLURRY SEAL	15,087	2
55	RED ELK DR	LITTLE RAPIDS WY	BIG HORN BLVD	TYPE II - SLURRY SEAL	7,092	2

Subzone	Street Name	Begin Location	End Location	Anticipated Treatment	Area (sf)	Maint. Zone
55	ROBLIN CT	ROYSTON WY	CDS-SOUTH END	TYPE II - MICROSURFACING	12,031	2
55	ROYSTON WAY	WYMARK DR	WADENA WY	TYPE II - MICROSURFACING	21,120	2
55	TRENHOLM DR	SOARING OAKS DR	LAGUNA BLVD	TYPE II - SLURRY SEAL	128,016	2
55	VILLAGE BROOK WAY	VILLAGE TREE DR	LITTLE RAPIDS WY	TYPE II - SLURRY SEAL	7,514	2
55	VILLAGE TREE DR	LITTLE RAPIDS WAY	BIG HORN BLVD	TYPE II - SLURRY SEAL	66,724	2
55	WADENA WAY	MELFORT WY (WEST)	MELFORT WY (MIDDLE)	TYPE II - MICROSURFACING	55,978	2
59	BABYLON DR	CIVIC CENTER DR	NASSA CIR	TYPE II - SLURRY SEAL	16960	5
59	BARCELLA DR	BRUCEVILLE RD	NASSA CIR	TYPE II - SLURRY SEAL	40864	5
59	CANERIA WAY	CORDIALLY WAY	COLLIE WAY	TYPE II - SLURRY SEAL	34,450	5
59	CELLANA DR	NASSA CIR	DENALI CIR	TYPE II - SLURRY SEAL	35392	5
59	CHICKSAW CT	CANERIA WAY	CDS	TYPE II - SLURRY SEAL	2834	5
59	CLEMENZA WAY	CELLANA DR	CORDIALLY WAY	TYPE II - SLURRY SEAL	21372	5
59	COLLIE WAY	BRUCEVILLE RD	CORDIALLY WAY	TYPE II - SLURRY SEAL	64506	5
59	CORDIALLY WAY	WYMARK DR	CELLANA DR	TYPE II - SLURRY SEAL	160,524	5
59	DEARNE WAY	CORDIALLY WAY	PEAK FOREST WAY	TYPE II - SLURRY SEAL	6604	5
59	DEBARNHART WAY	CORDIALLY WAY	NASSA CIR	TYPE II - SLURRY SEAL	11518	5
59	DEMUI WAY	CLEMENZA WAY	WYMARK DR	TYPE II - SLURRY SEAL	19760	5
59	HATHERTON WAY	MAISS WAY	PEAK FOREST WAY	TYPE II - SLURRY SEAL	6750	5
59	KUGLER DR	CORDIALLY WAY	CELLANA DR	TYPE II - SLURRY SEAL	47346	5
59	KUGLER WAY	CORDIALLY WAY	CELLANA DR	TYPE II - SLURRY SEAL	47,346	5
59	MAISS WAY	CORDIALLY WAY	DENALI CIR	TYPE II - SLURRY SEAL	21944	5
59	MIKETO WAY	DEMUI WAY	CELLANA DR	TYPE II - SLURRY SEAL	19838	5
59	NASSA CIR	BARCELLA DR	BARCELLA DR	TYPE II - SLURRY SEAL	41632	5
59	SHANELYN WAY	DEMUI WAY	CORDIALLY WAY	TYPE II - SLURRY SEAL	50804	5
59	SPIESS CT	DENALI CIR	CDS	TYPE II - SLURRY SEAL	6086	5
71	AGAVE WAY	FREESIA DR	MORNING GLORY WAY	TYPE II - MICROSURFACING	15,834	3
71	AMARYLLIS CT	SCARLET SAGE WAY	CDS	TYPE II - MICROSURFACING	13,669	3
71	ANTHEMIS CT	GOLDEN SAGE DR	CDS	TYPE II - SLURRY SEAL	12,297	3
71	BLUE MAIDEN CT	SATIN BELLS WAY	CDS	TYPE II - SLURRY SEAL	6,623	3
71	BLUE MAIDEN WAY	SHASTA LILY DR	SATIN BELLS WAY	TYPE II - SLURRY SEAL	51,662	3
71	BOTTLE BRUSH CT	FREESIA DR	CDS	TYPE II - SLURRY SEAL	12,889	3
71	BOUVARDIA CT	SHASTA LILY DR	CDS	TYPE II - SLURRY SEAL	10,289	3
71	CARISSA WAY	FREESIA DR	MORNING GLORY WAY	TYPE II - SLURRY SEAL	23,400	3
71	CORBALLY CT	CARISSA WAY	CDS	CAPE SEAL	5,195	3
71	CROCUS CT	FREESIA DR	CDS	CAPE SEAL	12,759	3
71	CYCLADIC CT	NEMEA WAY	CDS	TYPE II - SLURRY SEAL	6,493	3
71	DORIC CT	TEGEA WAY	CDS	TYPE II - SLURRY SEAL	11,303	3
71	FAREWELL CT	SHASTA LILY DR	CDS	TYPE II - SLURRY SEAL	9,150	3
71	GOLDEN SAGE DR	SHELDON NORTH DR	EAST END	TYPE II - SLURRY SEAL	40,068	3
71	HAWKESBURY CT	CARISSA WAY	CDS	CAPE SEAL	5,193	3
71	HOPEDALE CT	SHASTA LILY DR	CDS	TYPE II - SLURRY SEAL	14,293	3
71	IONEAN CT	MYSTRAS CIR	CDS	TYPE II - SLURRY SEAL	6,519	3
71	LILAC FAWN WAY	SHASTA LILY DR	BLUE MAIDEN WAY	TYPE II - SLURRY SEAL	6,682	3
71	LOCKEPORT CT	SHASTA LILY DR	CDS	TYPE II - SLURRY SEAL	13,513	3
71	MACEDONIAN CT	MYSTRAS CIR	CDS	TYPE II - SLURRY SEAL	8,079	3
71	MINOAN CT	NEMEA WAY	CDS	TYPE II - SLURRY SEAL	10,081	3
71	MOCKENHAUPT CT	SCARLET SAGE WAY	CDS	TYPE II - SLURRY SEAL	12,180	3
71	MORNING GLORY WAY	FREESIA DR	CARISSA WAY	TYPE II - MICROSURFACING	21,138	3
71	MYSTRAS CIR	TEGEA WAY	TEGEA WAY	TYPE II - SLURRY SEAL	48,048	3
71	NEMEA WAY	TEGEA WAY	SHASTA LILY DR	TYPE II - MICROSURFACING	26,000	3
71	NEWRY CT	AGAVE WAY	CDS	TYPE II - MICROSURFACING	6,363	3
71	NIGHTSHADE CT	BLUE MAIDEN WAY	CDS	TYPE II - SLURRY SEAL	8,079	3
71	OPP CT	WATER POPPY WAY	CDS	TYPE II - SLURRY SEAL	11,335	3
71	PINEDROPS CT	SHASTA LILY DRIVE	CDS	TYPE II - SLURRY SEAL	7,176	3
71	PRAIRIE SMOKE CT	BLUE MAIDEN WY	CDS	TYPE II - MICROSURFACING	9,255	3
71	ROYAL SUNSET CT	SHELDON NORTH DR	CDS-EAST END	TYPE II - MICROSURFACING	9,483	3
71	SATIN BELLS WAY	BLUE MAIDEN WAY	SHASTA LILY DR	TYPE II - SLURRY SEAL	5,824	3
71	SCARLET SAGE WAY	SHELDON NORTH DR	EAST END	TYPE II - MICROSURFACING	28,912	3
71	SCHUBERT CT	BLUE MAIDEN WY	CDS	TYPE II - SLURRY SEAL	8,105	3
71	SHASTA LILY DR	SHELDON NORTH DR	TEGEA WAY (NORTH)	TYPE II - SLURRY SEAL	90,006	3
71	SHASTA LILY DR	TEGEA WAY (NORTH)	FREESIA DR	TYPE II - SLURRY SEAL	45,990	3
71	SNAPDRAGON CT	SHELDON NORTH DR	CDS	TYPE II - MICROSURFACING	12,551	3
71	SNOW FIRE CT	SHELDON NORTH DR	CDS	TYPE II - SLURRY SEAL	9,431	3

Subzone	Street Name	Begin Location	End Location	Anticipated Treatment	Area (sf)	Maint. Zone
71	TEGEA WAY	SHASTA LILY DR	SHASTA LILY DR	TYPE II - MICROSURFACING	32,916	3
71	THRACIAN CT	NEMEA WY	CDS	TYPE II - SLURRY SEAL	6,415	3
71	TWILLINGATE CT	CARISSA WAY	CDS	TYPE II - MICROSURFACING	9,405	3
71	WATER POPPY WAY	SCARLET SAGE WAY	GOLDEN SAGE DRIVE	TYPE II - SLURRY SEAL	23,400	3
77	ASPEN CREST CT	ELK CREST DR	CDS - WEST END	TYPE II - SLURRY SEAL	15,971	3
77	ASTER CREST CT	EMERALD VISTA DR	CDS	TYPE II - SLURRY SEAL	16,509	3
77	BANFF VISTA DR	EMERALD VISTA DR	E STOCKTON BLVD	TYPE II - SLURRY SEAL	102,720	3
77	BIRCH CREST CT	ELK CREST DR	CDS - WEST END	TYPE II - SLURRY SEAL	15,807	3
77	CELTIC WAY	FEICKERT DR	DIAMOND OAK WY	TYPE II - MICROSURFACING	10,692	3
77	CHERRY CREST CT	ELK CREST DR	CDS - WEST END	TYPE II - SLURRY SEAL	16,492	3
77	CORAL CREST CT	EMERALD CREST DR	CDS - WEST END	TYPE II - SLURRY SEAL	12,551	3
77	CROWN POINT WAY	BANFF VISTA DR	DIAMOND OAK WAY	TYPE II - MICROSURFACING	10,400	3
77	CROWN PRINCE CT	HOSPENTHAL WAY	CDS - EAST END	TYPE II - SLURRY SEAL	6,630	3
77	DEODAR CREST CT	ELK CREST DR	CDS - WEST END	TYPE II - SLURRY SEAL	15,807	3
77	DIAMOND CREST CT	EMERALD VISTA DR	CDS - WEST END	TYPE II - SLURRY SEAL	14,013	3
77	DIAMOND OAK WAY	END	HOSPENTHAL WY (S)	TYPE II - MICROSURFACING	73,840	3
77	E STOCKTON BLVD	EMERALD VISTA DR	2498' S/O BOND RD	TYPE II - SLURRY SEAL	141,664	3
77	E STOCKTON BLVD	2498' S/O BOND RD	BOND RD	TYPE II - SLURRY SEAL	102,418	3
77	ELK CREST DR	BOND RD	EMERALD VISTA DR	TYPE II - SLURRY SEAL	51,660	3
77	EMERALD CREST DR	BOND RD	EMERALD VISTA DR	TYPE II - SLURRY SEAL	65,760	3
77	EMERALD VISTA DR	FEICKERT DR	EMERALD CREST DR	TYPE II - MICROSURFACING	59,064	3
77	EMERALD VISTA DR	EMERALD CREST DR	ORANGE CREST CT	TYPE II - MICROSURFACING	65,918	3
77	FEICKERT DR	EMERALD VISTA DR	EMERALD VISTA DR	TYPE II - MICROSURFACING	73,955	3
77	FERN CREST WAY	ELK CREST DR	EMERALD CREST DR	TYPE II - SLURRY SEAL	21,398	3
77	FIR CREST CT	ELK CREST DR	CDS - WEST END	TYPE II - SLURRY SEAL	7,533	3
77	GARLAND CREST CT	ELK CREST DR	EAST END	TYPE II - SLURRY SEAL	12,219	3
77	HAZEL CREST CT	ELK CREST DR	CDS - EAST END	TYPE II - MICROSURFACING	7,253	3
77	Hospenthal Way	Banff Vista Dr	W/End	CAPE SEAL	25,818	3
77	IRIS CREST WAY	ELK CREST DR	EMERALD VISTA DR	TYPE II - MICROSURFACING	22,438	3
77	JASMINE CREST CT	FEICKERT DR	CDS	TYPE II - MICROSURFACING	15,391	3
77	JESTER CT	DIAMOND OAK WAY	CDS - WEST END	TYPE II - MICROSURFACING	9,905	3
77	KING OAK CT	BANFF VISTA DR	CDS - SOUTH END	TYPE II - MICROSURFACING	8,677	3
77	LIME CREST CT	FERN CREST WAY	NORTH END	TYPE II - SLURRY SEAL	5,233	3
77	LUJAN CREST CT	EMERALD VISTA DR	WEST END	TYPE II - SLURRY SEAL	12,031	3
77	OPAL CREST CT	FERN CREST WAY	NORTH END	TYPE II - SLURRY SEAL	3,094	3
77	ORANGE CREST CT	EMERALD VISTA DR	CDS - NORTH END	TYPE II - SLURRY SEAL	8,267	3
77	PEARL CREST CT	EMERALD CREST DR	CDS - WEST END	TYPE II - MICROSURFACING	6,831	3
77	QUEEN OAK CT	BANFF VISTA DR	CDS - NORTH END	CAPE SEAL	9,145	3
77	ZIRCON CREST CT	EMERALD VISTA DR	CDS - WEST END	TYPE II - SLURRY SEAL	13,701	3
87	BATEY AVE	LOCUST ST	RANCHO DR	TYPE II - SLURRY SEAL	54,110	2
87	BELLA VISTA PL	CUPERTINO DR	CDS	TYPE II - MICROSURFACING	10,530	2
87	BELLA VISTA WAY	MONTE CRESTA WAY	CUPERTINO DR	TYPE II - SLURRY SEAL	8,658	2
87	BUCKSKIN CT	SCHOOL ST	EAST END	TYPE II - SLURRY SEAL	9,653	2
87	BUGGYWHIP CT	SCHOOL ST	CDS - EAST END	TYPE II - MICROSURFACING	9,764	2
87	CLYDESDALE CT	SCHOOL ST	CDS - WEST END	TYPE II - SLURRY SEAL	14,765	2
87	CUPERTINO DR	BELLA VISTA WAY	PORTO BELLA WAY	TYPE II - SLURRY SEAL	36,680	2
87	DAPPLE CT	THOROUGHbred WAY	CDS	CAPE SEAL	10,711	2
87	DERR ST	LOCUST ST	ELK GROVE BLVD	TYPE II - SLURRY SEAL	12,000	2
87	EL GATO CT	PORTO ROSA DR	CDS - WEST END	TYPE II - MICROSURFACING	8,839	2
87	LAGUNA CREEK DR	SCHOOL ST	CDS - NORTH END	TYPE II - SLURRY SEAL	80,852	2
87	LOCUST ST	WEST END	EAST END	TYPE II - SLURRY SEAL	59,153	2
87	MONTE CRESTA WAY	PORTA ROSA DR	PORTO BELLA WAY	TYPE II - SLURRY SEAL	35,672	2
87	PACER CT	PORTO ROSA DR	CDS	TYPE II - SLURRY SEAL	14,715	2
87	PORTO BELLA WAY	CUPERTINO DR	MONTE CRESTA WY	TYPE II - MICROSURFACING	38,584	2
87	PORTO ROSA DR	ELK GROVE BLVD	MONTE CRESTA WAY	TYPE II - SLURRY SEAL	107,700	3
87	PORTO VISTA CT	MONTE CRESTA WY	CDS - EAST END	CAPE SEAL	7,930	2
87	QUARTER HORSE CT	THOROUGHbred WY	CDS	CAPE SEAL	7,019	2
87	RANCHO DR	WATERMAN RD	325' E/O BATEY DR	CAPE SEAL	76,212	2
87	RANCHO DR	LAGUNA CREEK DR	325' E/O BATEY AVE	TYPE II - SLURRY SEAL	70,488	2
87	SAN PAULO CIR	MONTE CRESTA WY	MONTE CRESTA WY	TYPE II - MICROSURFACING	24,570	2
87	SCHOOL ST	ELK GROVE BLVD	RANCHO DR	TYPE II - SLURRY SEAL	58,560	2
87	SHETLAND CT	LAGUNA CREEK DR	CDS - EAST END	TYPE II - SLURRY SEAL	11,968	3
87	THOROUGHbred WAY	PORTO ROSA DR	WATERMAN RD	TYPE II - SLURRY SEAL	24,076	3

Subzone	Street Name	Begin Location	End Location	Anticipated Treatment	Area (sf)	Maint. Zone
87	VOOS CT	SCHOOL ST	CDS - EAST END	TYPE II - SLURRY SEAL	9,684	2
87	YOUNT CT	SCHOOL ST	CDS - EAST END	TYPE II - SLURRY SEAL	9,957	2
94	ANAKIN LN	NOHEA LN	JORDAN RANCH RD	TYPE II - SLURRY SEAL	10,166	3
94	BERT DR	BINGER DR	EAST END	CAPE SEAL	17,900	3
94	BINGER DR	NORSID DR	BERT DR	CAPE SEAL	20,200	3
94	CORLEY COVE LN	JORDAN RANCH RD	165' E/O JUSTAWEE CT	TYPE II - SLURRY SEAL	11,154	3
94	DANIELS CT	JORDAN RANCH RD	CDS	G&P BULB/TYPE II - SLURRY SEAL	12,547	3
94	DIDORWILL CT	JORDAN RANCH RD	CDS	G&P BULB/TYPE II - SLURRY SEAL	8,502	3
94	EDEVA WAY	BADER RD	WEST END	CAPE SEAL	29,674	3
94	GOOD SHEPHERD LN	SANDAGE AVE	CDS	TYPE II - SLURRY SEAL	16,500	3
94	JEANEVA WAY	BERT DR	NORSID DR	CAPE SEAL	18,715	3
94	JUSTAMERE LN	BADER RD	WEST END	TYPE II - MICROSURFACING	23,724	3
94	JUSTAWEE CT	CORLEY COVE LN	CDS	G&P BULB/TYPE II - SLURRY SEAL	12,168	3
94	MENDOZA LN	130' W/O NOHEA LN	90' E/O NOHEA LN	TYPE II - SLURRY SEAL	5,720	3
94	MIKO CIR	JORDAN RANCH RD	JORDAN RANCH RD	TYPE II - SLURRY SEAL	44,356	3
94	NIEMANN AVE	BRADSHAW RD	319FT W/O BRADSHAW RD	TYPE II - SLURRY SEAL	13,398	3
94	NOHEA LN	MENDOZA LN	WADDELL LN	TYPE II - SLURRY SEAL	12,428	3
94	NORSID DR	CDS	BINGER DR	CAPE SEAL	17,880	3
94	OAK RANCH PL	BADER RD	CDS - WEST END	TYPE II - SLURRY SEAL	31,489	3
94	PINE ACRE CT	BADER RD	CDS - WEST END	CAPE SEAL	26,496	3
94	SANDAGE AVE	BRADSHAW RD	WEST END @ PVMNT CHNG	CAPE SEAL	56,107	3
94	WADDELL LN	JORDAN RANCH RD	CDS	TYPE II - SLURRY SEAL	19,058	3
95	ALMONDWILLOW WAY	BOND RD	STONEBROOK DR	TYPE II - SLURRY SEAL	35,316	3
95	ARCADA CT	BAYPOINT WAY	CDS	TYPE II - SLURRY SEAL	9,282	3
95	BAYPOINT WAY	ELK GROVE BLVD	EAST PARK DR	TYPE II - SLURRY SEAL	54,240	3
95	BEAVERTON CT	STONEBROOK DR	CDS	TYPE II - SLURRY SEAL	11,825	3
95	BLUE FALLS CT	SIERRA RIVER DR	CDS	TYPE II - SLURRY SEAL	6,701	3
95	BOULDER RIVER WAY	BOND RD	STONEBROOK DR	TYPE II - SLURRY SEAL	34,580	3
95	BRENTON CT	SIERRA RIVER DR	CDS	TYPE II - SLURRY SEAL	11,647	3
95	BRIARTOWN CT	SIERRA RIVER DR	CDS	TYPE II - SLURRY SEAL	10,633	3
95	BROOKMONT CT	STONEBROOK DR	CDS	TYPE II - SLURRY SEAL	9,983	3
95	BRUCKNER CT	SIERRA RIVER DR	CDS	TYPE II - MICROSURFACING	4,419	3
95	CALLISTO CT	LYNDLEY PLAZA WAY	CDS	TYPE II - SLURRY SEAL	2,548	3
95	CLEAR SPRINGS CIR	BOULDER RIVER WAY	BOULDER RIVER WAY	TYPE II - SLURRY SEAL	23,556	3
95	CLIFT CT	BAYPOINT WAY	CDS	TYPE II - SLURRY SEAL	9,724	3
95	COLWIN WAY	SIERRA RIVER DR	RAINBOW FALLS WAY	TYPE II - SLURRY SEAL	16,458	3
95	CRUZ CT	WATERMAN RD	CDS	TYPE II - SLURRY SEAL	17,203	3
95	DANTE CT	TROLIO WAY	CDS	TYPE II - SLURRY SEAL	10,607	3
95	EAST PARK DR	WEST END	STONEBROOK DR	TYPE II - SLURRY SEAL	37,212	3
95	GENSLER CT	SIERRA RIVER DR	CDS	TYPE II - SLURRY SEAL	11,585	3
95	GOODMAN CT	COLWIN WAY	CDS	TYPE II - MICROSURFACING	6,025	3
95	GRANITE FALLS CT	SIERRA RIVER DR	CDS WEST END	TYPE II - SLURRY SEAL	10,185	3
95	HAMBLEY CIR	SIERRA RIVER DR	SIERRA RIVER DR	TYPE II - SLURRY SEAL	30,212	3
95	HAVENVIEW WAY	STONEBROOK DR	LYNDLEY PLAZA WAY	TYPE II - MICROSURFACING	27,456	3
95	LOCKFORD CT	LOCKFORD WAY	CDS	TYPE II - SLURRY SEAL	8,807	3
95	LOCKFORD WAY	EAST PARK DR	STONEBROOK DR	TYPE II - SLURRY SEAL	23,790	3
95	LOST SPRINGS CT	RAINBOW CREEK WAY	CDS	TYPE II - SLURRY SEAL	6,188	3
95	LYNDLEY PLAZA WAY	SIERRA RIVER DR	STONEBROOK DR	TYPE II - SLURRY SEAL	28,262	3
95	MANDRAKE CT	STONEBROOK DR	CDS	TYPE II - MICROSURFACING	10,347	3
95	MISTY RIVER WAY	SIERRA RIVER DR	STONEBROOK DR	CAPE SEAL	37,284	3
95	MISTY SPRINGS CT	RUSHING CREEK WAY	CDS	TYPE II - SLURRY SEAL	12,116	3
95	OAKLEY WAY	SIERRA RIVER DR	STONEBROOK DR	TYPE II - SLURRY SEAL	19,656	3
95	RAINBOW CREEK WAY	BOND RD	MISTY SPRINGS CT	TYPE II - SLURRY SEAL	22,334	3
95	RAINBOW FALLS WAY	LYNDLEY PLAZA WAY	STONE SPRINGS DR	TYPE II - SLURRY SEAL	38,376	3
95	RISING CREEK WAY	SIERRA RIVER DR	STONE SPRINGS DR	TYPE II - SLURRY SEAL	23,218	3
95	RIVER FALLS CT	SIERRA RIVER DR	CDS	TYPE II - SLURRY SEAL	6,863	3
95	RIVER SPRINGS WAY	RUSHING CREEK WAY	SIERRA RIVER DR	TYPE II - MICROSURFACING	7,852	3
95	RUSHING CREEK WAY	RAINBOW CREEK WAY	CDS	TYPE II - SLURRY SEAL	27,482	3
95	SHADOWROCK WAY	ALMONDWILLOW WAY	ALMONDWILLOW WAY	TYPE II - SLURRY SEAL	18,408	3
95	SIERRA RIVER DR	BOND RD	E PARK DR	TYPE II - SLURRY SEAL	159,660	3
95	STONE SPRINGS DR	SIERRA RIVER DR	STONEBROOK DR	TYPE II - SLURRY SEAL	49,356	3
95	STONE SPRINGS DR	WEST END	SIERRA RIVER DR	TYPE II - SLURRY SEAL	11,910	3
95	STONEBROOK DR	BOND ROAD	EAST PARK DR	TYPE II - SLURRY SEAL	183,600	3

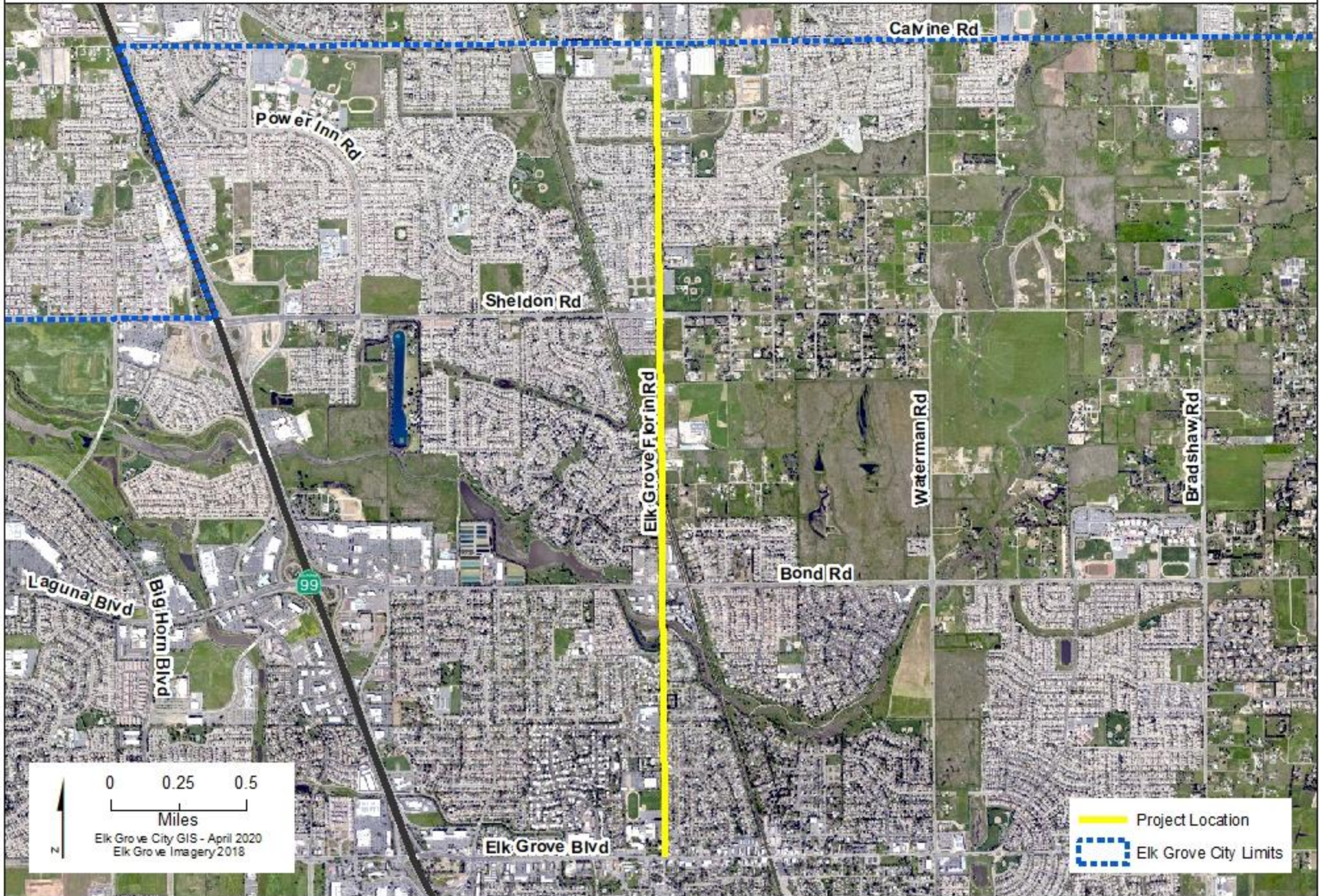
Subzone	Street Name	Begin Location	End Location	Anticipated Treatment	Area (sf)	Maint. Zone
95	STONEBROOK DR	EAST PARK DR	LOCKFORD WAY	TYPE II - SLURRY SEAL	8,600	3
95	TIMBER RIVER WAY	SIERRA RIVER DR	STONEBROOK DR	TYPE II - MICROSURFACING	36,712	3
95	TROLIO WAY	SIERRA RIVER DR	MISTY RIVER WY	CAPE SEAL	21,268	3
95	WILLOW FALLS CIR	BOULDER RIVER WAY	BOULDER RIVER WAY	TYPE II - SLURRY SEAL	28,834	3
95	WILLOW POND CIR	STONE SPRINGS DR	STONE SPRINGS DR	TYPE II - MICROSURFACING	38,740	3
95	WINDING RIVER WAY	MISTY RIVER WAY	STONEBROOK DR	CAPE SEAL	20,384	3
104	CANTER DR	EQUESTRIAN DR	WRANGLER DR	TYPE II - SLURRY SEAL	43,520	3
104	EQUESTRIAN DR	GRANT LINE RD	CDS	CAPE SEAL	136,864	3
104	SHERMAN OAKS CT	GRANT LINE RD	SE END-CDS	TYPE II - SLURRY SEAL	28,450	3
104	WRANGLER DR	EQUESTRAIN DR	GRANT LINE RD	CAPE SEAL	90,400	3



Elk Grove Florin Road Complete Street & Resurfacing - WTR078

Project Location Map

EXHIBIT E



CERTIFICATION
ELK GROVE CITY COUNCIL RESOLUTION NO. 2024-074

STATE OF CALIFORNIA)
COUNTY OF SACRAMENTO) ss
CITY OF ELK GROVE)

I, Jason Lindgren, City Clerk of the City of Elk Grove, California, do hereby certify that the foregoing resolution was duly introduced, approved, and adopted by the City Council of the City of Elk Grove at a regular meeting of said Council held on May 22, 2024 by the following vote:

AYES: **COUNCILMEMBERS:** *Singh-Allen, Brewer, Robles, Spease, Suen*

NOES: **COUNCILMEMBERS:** *None*

ABSTAIN: **COUNCILMEMBERS:** *None*

ABSENT: **COUNCILMEMBERS:** *None*


Jason Lindgren, City Clerk
City of Elk Grove, California