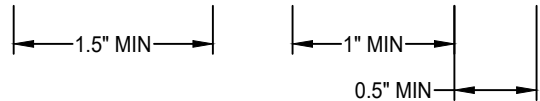


CITY OF ELK GROVE PLAN APPROVAL BLOCK

CITY OF ELK GROVE DEVELOPMENT SERVICES	
(PUT PROJECT NAME HERE)	
Parcel No.:	
California Map Coordinates: <small>(Can use Thomas Brothers Guide to estimate coordinates)</small>	
Facility Code:	County Drainage Fee Paid:
City's Project No.:	
Accepted By:	
CITY OF ELK GROVE DEVELOPMENT SERVICES	DATE

PLAN REVISION BLOCK

Rev. No.	Description	Engr Init.	CITY ACCEPTANCE	
			By	Date



- PROJECT NAME, PARCEL NUMBER AND MAP COORDINATES SHALL BE IN 10 POINT ARIAL FONT.
- APPROVAL BLOCK SHALL BE LOCATED AT THE LOWER RIGHT CORNER OF TITLE SHEET, WITHIN BOTTOM 6 INCHES AND RIGHT 8 INCHES OF PAGE.

1. PUT REVISION BLOCK ON ALL SHEETS.

OTHER AGENCY APPROVAL BLOCKS

INCLUDE ON PLANS AS NECESSARY

Approved By:
ELK GROVE CSD - FIRE DEPARTMENT
DATE

Approved By:
ELK GROVE CSD - PARKS AND RECREATION DEPT.
DATE

Approved By:
COUNTY SANITATION DISTRICT 1
DATE

Approved For: Water Conservation Only
CITY OF ELK GROVE LANDSCAPE ARCHITECT
DATE

Approved By:
WATER AGENCY NAME
DATE

- PUT "SACRAMENTO COUNTY WATER AGENCY" OR "ELK GROVE WATER SERVICE" OR BOTH IN PLACE OF "WATER AGENCY NAME" ABOVE.

DATE 09-22-2017		NOT TO SCALE	
REVISION	BY	APPROVED	DATE
01	STN	SA	06-20-2023

CITY OF ELK GROVE - PUBLIC WORKS

APPROVAL BLOCKS

APPROVED BY:	
	06-21-2023
CITY ENGINEER	DATE



DRAWING NUMBER

D - 1

DRAFTING STANDARDS

ALL SUBDIVISION PLANS, CONSTRUCTION DRAWINGS, & PROPERTY PLATS SUBMITTED TO THE CITY ENGINEER FOR CONSIDERATION SHALL CONFORM TO AND BE PREPARED IN ACCORDANCE WITH THE FOLLOWING STANDARDS:

1. ALL LETTERING, OTHER THAN THAT HEREIN SPECIFIED OR SHOWN BELOW, SHALL BE A MINIMUM OF 0.100 INCH IN HEIGHT AND USING 0.01" LINE WIDTH, OR EQUAL.

2. SUBDIVISION PLANS

	<u>LINE WIDTH</u>	
STREET CENTER LINES	—————	0.01" WIDTH
RADIAL BEARING LINES	—————	0.01" WIDTH
EASEMENT LINES	—————	0.01" WIDTH
LOT LINES	—————	0.02" WIDTH
RIGHT-OF-WAY LINES	—————	0.03" WIDTH
BLOCK OUTLINE	—————	0.03" WIDTH
SUBDIVISION OUTLINE	—————	0.04" WIDTH
MONUMENTS SET	○	
MONUMENTS SET IN MONUMENT BOX	⊙	
MONUMENTS FOUND	⊗	
MONUMENTS FOUND IN MONUMENT BOX	⊗	
BENCH MARK ELEVATION	⊕	
STREET NAMES	NAME	LETTERS 0.175" HIGH AND 0.04" LINE WIDTH
LOT NUMBERS	36	LETTERS 0.175" HIGH AND 0.02" LINE WIDTH
BEARINGS, DISTANCES, CURVE DATA, COORDINATES, ETC.		LETTERS 0.100" HIGH AND 0.01" LINE WIDTH
ADJACENT SUBDIVISIONS		LETTERS 0.175" HIGH AND SHADOW LETTERING AND 0.01" LINE WIDTH
ADJACENT LOT NUMBERS		LETTERS 0.175" HIGH AND DOTTED LETTERING AND 0.01" LINE WIDTH

TITLE BLOCK AND OTHER RELATED LETTERING SHALL BE IN ACCORDANCE WITH STANDARD ACCEPTED ENGINEERING PRACTICE, BUT IN NO CASE SHALL THE LETTERING BE LESS THAN 0.100 INCH IN HEIGHT AND USING LINE WIDTH OF 0.01".

3. IMPROVEMENT PLANS

<u>DESCRIPTION</u>	<u>PROPOSED</u>	<u>EXISTING</u>
SANITARY SEWER	————— 6" SS —————	————— 6" SS —————
STORM SEWER (AKA STORM DRAIN)	————— 8" SD —————	————— 8" SD —————
GAS LINE	————— 4" G —————	————— 4" G —————
WATER LINE	————— 8" W —————	————— 8" W —————
TELEPHONE	————— T —————	————— T —————
CABLE TELEVISION	————— TV —————	————— TV —————
GAS VALVE	————— G ⊗ —————	————— G —————
WATER VALVE	————— W ⊗ —————	————— W —————
ELECTRICAL CONDUIT	————— E —————	————— E —————
MATCH LINE	—————	
	STA. 5+00	

DATE 09/22/2017		NOT TO SCALE	
REVISION	BY	APPROVED	DATE
01	STN	JRW	02/16/2021

CITY OF ELK GROVE - PUBLIC WORKS

DRAFTING STANDARDS

APPROVED BY: *Robert M. ...* 02/26/2021

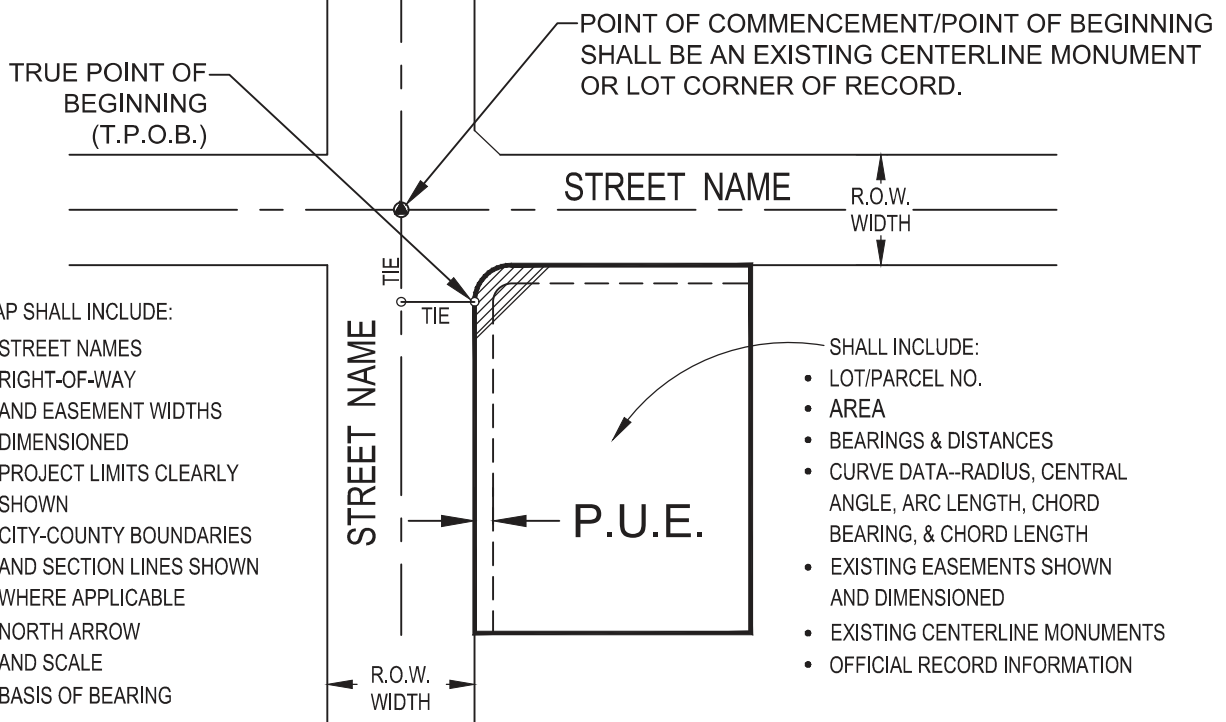
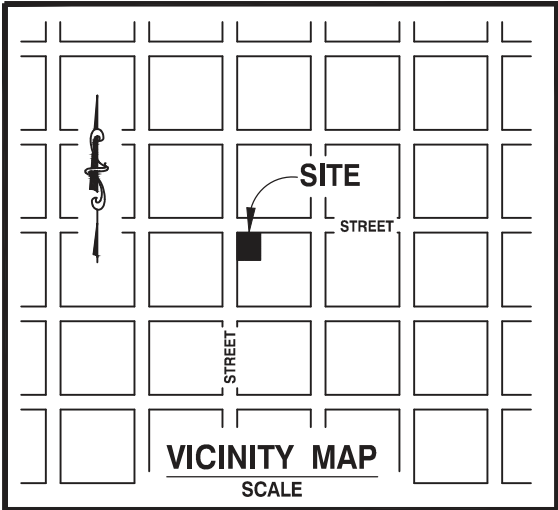
DATE

CITY ENGINEER

DRAWING NUMBER

D - 2





NOTES:

1. DRAFTING STANDARDS AND SYMBOLS SHALL CONFORM TO CITY OF ELK GROVE STANDARDS.
2. CLOSURE CALCULATIONS, INCLUDING AREA AND PRECISION, SHALL BE SUBMITTED SEPARATELY.
3. LEGAL DESCRIPTIONS SUBMITTED WITH THE MAP SHALL BE STAMPED AND SIGNED BY A REGISTERED PROFESSIONAL ENGINEER OR LICENSED LAND SURVEYOR.

PREPARED BY:

(ENGINEERING FIRM)

DATE: 09/22/2017		NOT TO SCALE	
REVISION	BY	APPROVED	DATE

CITY OF ELK GROVE - PUBLIC WORKS

**STANDARD MAP ASSOCIATED
WITH LEGAL DESCRIPTION FOR
8-1/2 " x 11" SHEET**

APPROVED BY:

Robert M. Muddoch

10/24/2018

CITY ENGINEER

DATE



DRAWING NUMBER

D - 3