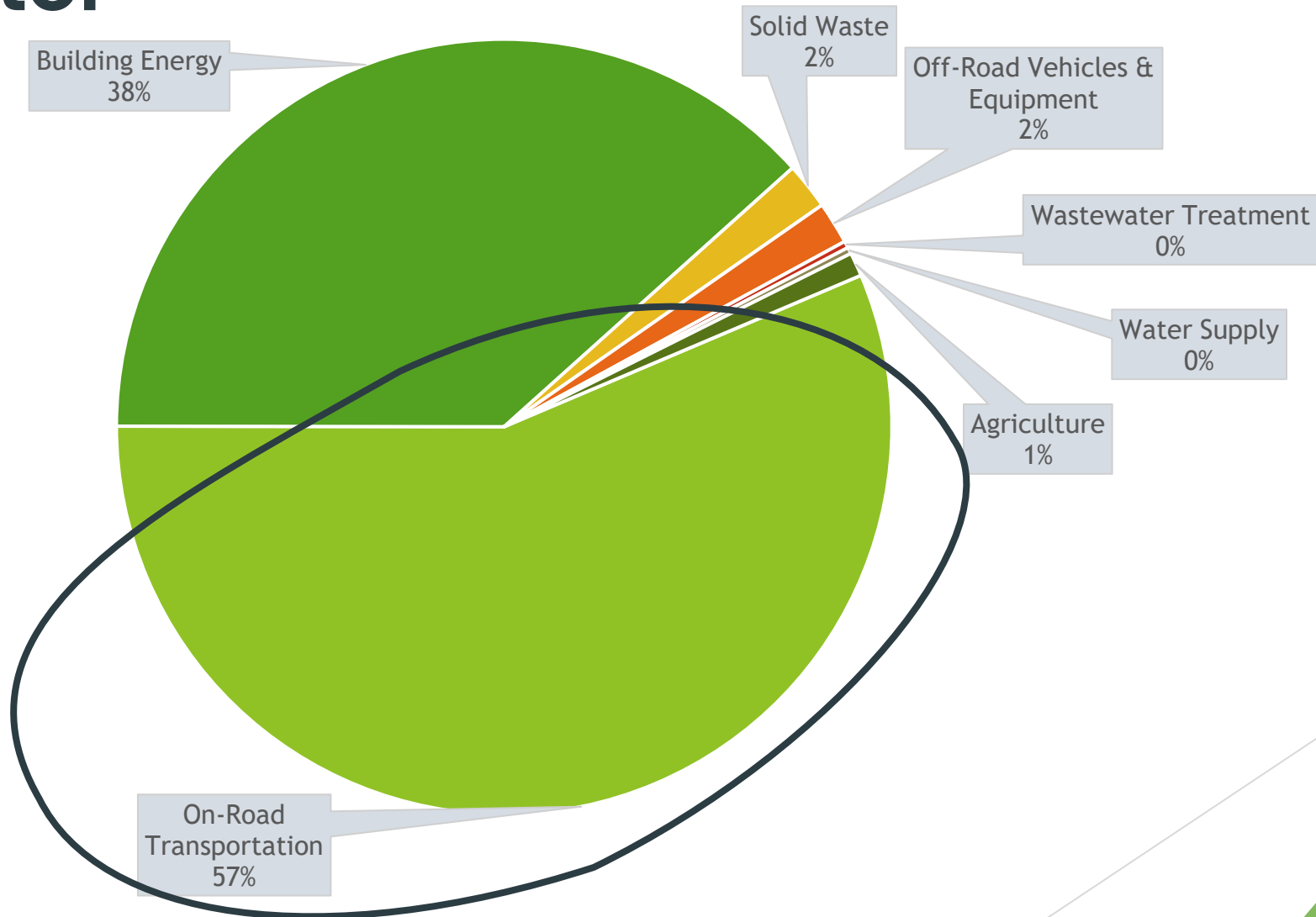


# Climate Compass: Transportation Sector

May 2024

# 2021 Communitywide Emissions by Sector



# On-Road Transportation VMT & Emissions

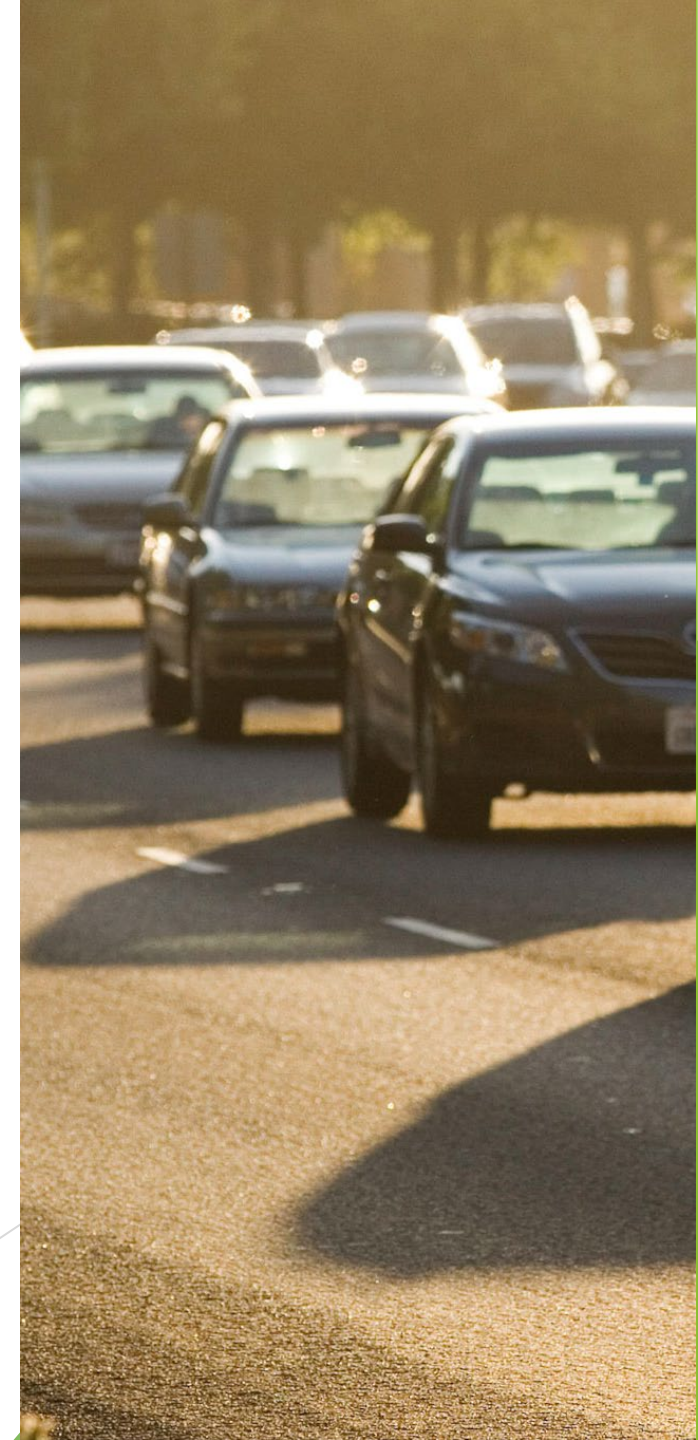
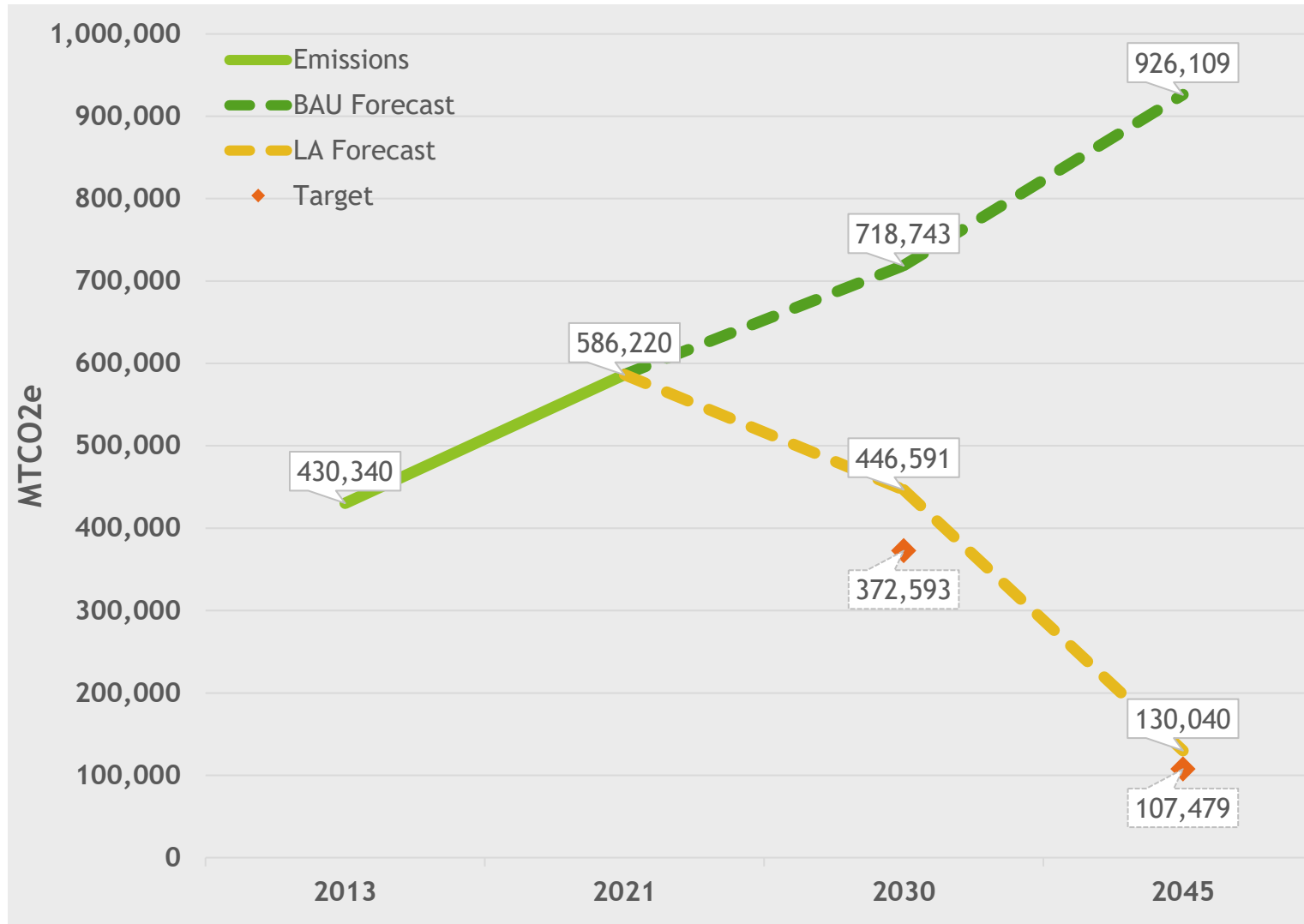
## 2021 VMT and Emissions



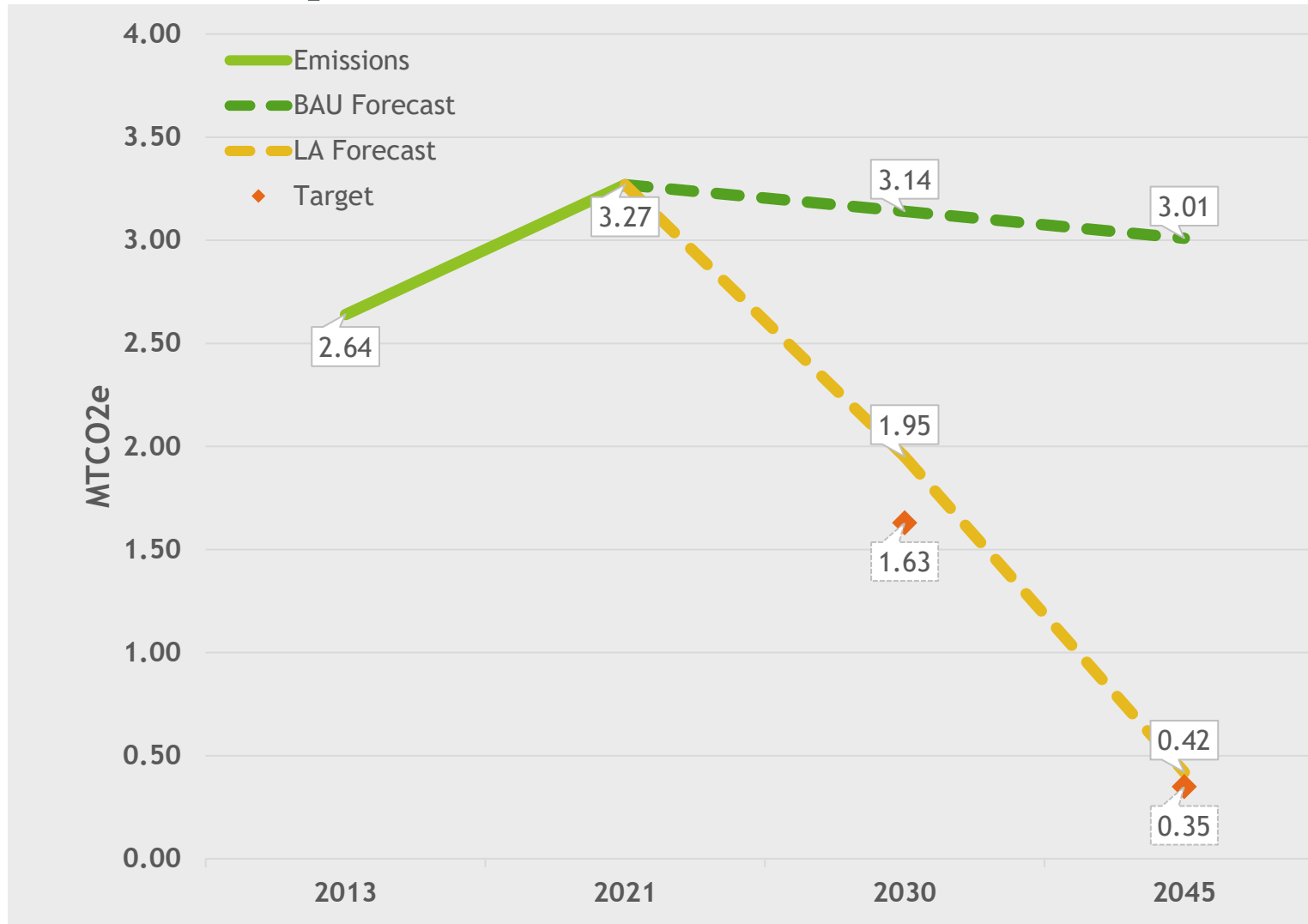
# State Legislation/Policy for Transportation Sector

- ▶ Advanced Clean Cars I Regulations
- ▶ Advanced Clean Cars II Regulations
- ▶ Advanced Clean Fleets
- ▶ Truck and Bus Regulations
- ▶ Fuel Efficiency Standards for Medium- and Heavy-Duty Vehicles

# On-Road Transportation Forecast



# On-Road Transportation Forecast - Per Capita



# Potential Reduction Strategies

## Decrease Vehicle Miles Traveled (VMT)

- ▶ Increase safe and connected bikeways
- ▶ Increase safe and connected trails and sidewalks
- ▶ Increase electric bike use
- ▶ Increase density
- ▶ Increase telework

## Increase Electric Vehicle Adoption

- ▶ Increase EV adoption
- ▶ Increase charging stations at or near affordable and MFR housing

## Decrease MHD Emissions

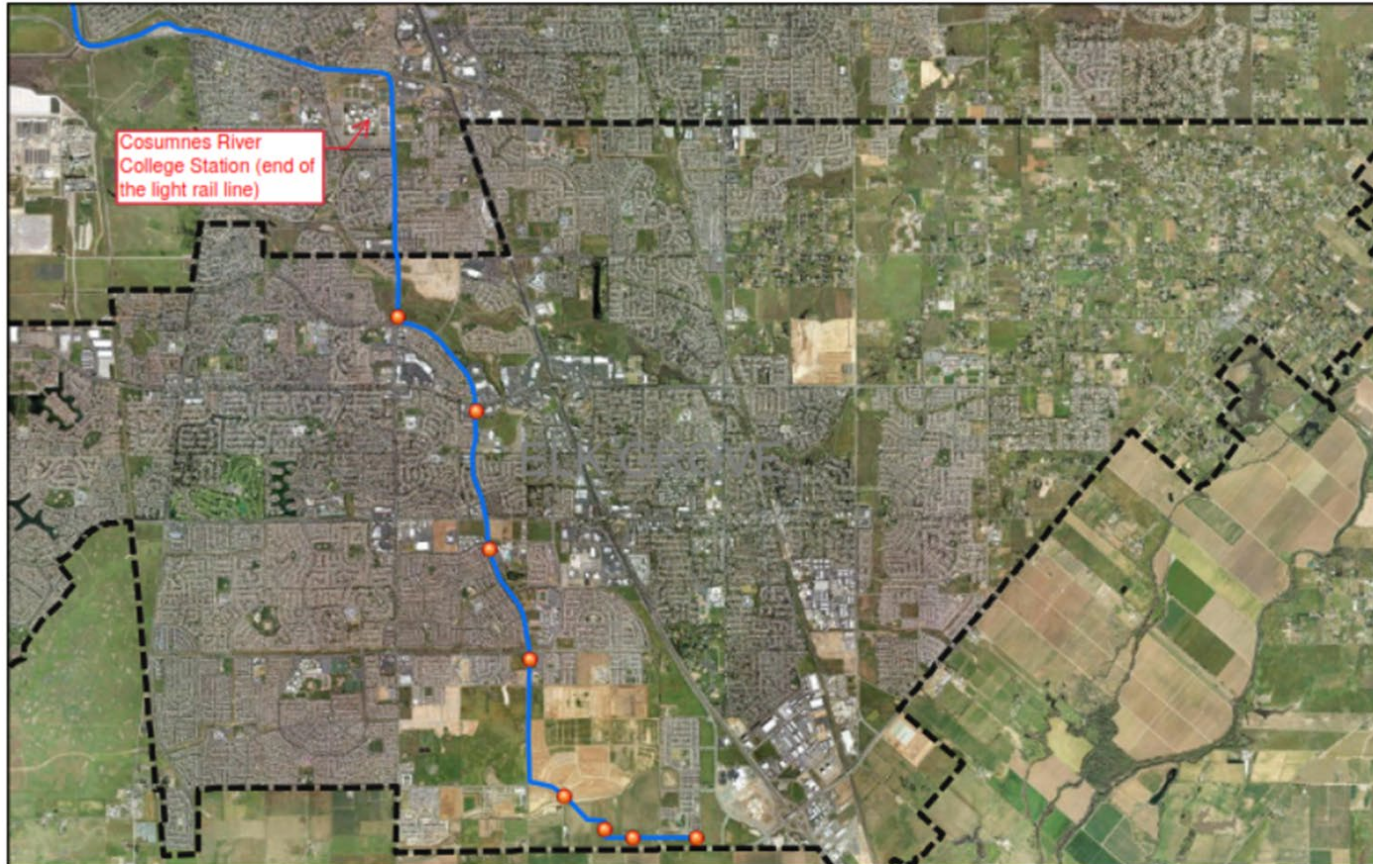
- ▶ Increase hydrogen fueling station options
- ▶ Increase MHD charging capacity

# ACE/Amtrak San Joaquins Station





# Light Rail/BRT Alignment



- 2009 Proposed Fixed Transit Stops
- 2009 Proposed Fixed Transit Alignment
- ⊞ Elk Grove City Limits

